



R5234464

📍 Puerto Banús

REF# R5234464 749.000 €

BEDS

2

BATHS

2

BUILT

126 m²

Just a two-minute walk from the beach, this apartment in Medina Garden is the ideal place for a family vacation. This wonderful apartment can accommodate up to 5 people. It offers 2 bedrooms (with extra beds and plenty of closet space), 2 bathrooms, a well equipped kitchen with separate laundry room with washing machine, a spacious living room and a large terrace with a dining and sitting areas with stunning sea and mountain views. It is not only the incredible views of Gibraltar and the African coast that give this apartment its privileged location, but the amazing views of the "Pueblos Blancos" at night, as their lights spread like a Bethlehem all over the mountains in the area. The southern Spanish climate makes this terrace the perfect place to sit with a glass of wine and some tapas in the evening, enjoy a cozy breakfast or brunch, or just relax with a good book with the sounds of the sea and seagulls in the background. The apartment has an elevator and a convenient subway parking space with direct access to the apartment. It also has central air conditioning and free wi-fi.

The apartment is part of a quiet and very well maintained community with tall subtropical trees and plants, Andalusian style fountains, a large swimming pool with access to showers and toilets and even a paddle

tennis court.

It is amazing how this tranquil oasis can be so close to a myriad of amenities just a stroll away. The Ocean Club (luxury day resort) is just across the street, as well as a walkway to the Puerto Banus boardwalk, which is only a five minute walk from this Medina Garden apartment. The Marbella Casino is across the road, as well as a large open-air market that brings together hundreds of traders every Saturday. There is easy access to several pharmacies, supermarkets and stores without the need to take the car. There is also public transportation in the area. The charming Old Town of Marbella and La Cañada (a large shopping center in Marbella) are only a 10 minute drive away.

Whether you come with family, friends or just to relax, this place has the recipe for a truly unforgettable vacation.

Indoor built area: 69m<sup>2</sup>.

Terrace: 25m<sup>2</sup>.

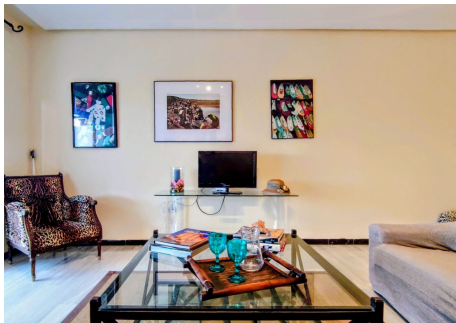
Parking space: 25m<sup>2</sup>.

Storage room: 7m<sup>2</sup>.

Total: 126m<sup>2</sup>.

Community fees: €119 per month.

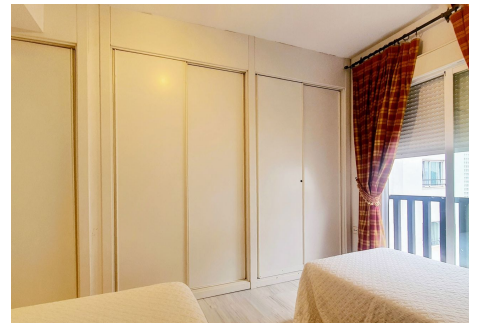
IBI fees: €419 per year.





# IDILIQ

ESTATES





# IDILIQ

ESTATES

