



R5234428

📍 Cancelada

REF# R5234428 649.000 €

BEDS

5

BATHS

3

BUILT

200 m<sup>2</sup>

TERRACE

50 m<sup>2</sup>

This beautiful semi-detached corner house located in the renowned Residencial Diana, in Estepona, stands out for its spaciousness, light and comfort, offering an ideal lifestyle for families looking for space and quality in a quiet and well-connected area. With 156 m<sup>2</sup> distributed over three floors, the property surprises from the outset with its magnificent orientation and large private garden, perfect for enjoying the outdoors all year round.

On the main floor, we are welcomed by a spacious and bright living room with direct access to the garden, creating a cosy atmosphere perfect for gatherings or moments of relaxation. The separate kitchen offers functionality and storage space, and on this same floor there is also a full bathroom, providing comfort for everyday life.

On the second floor there are four very bright bedrooms, along with two full bathrooms, as well as a large terrace that adds an ideal outdoor space to enjoy the sun or create a relaxation area.

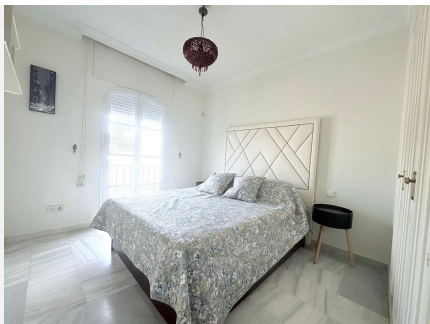
# IDILIQ

ESTATES

The third floor houses a loft-style room, much larger than usual, perfect as a master bedroom, office or play area, and is complemented by another private terrace with great privacy.

The residential complex offers excellent communal areas, including a communal swimming pool, paddle tennis court and football pitch, ideal for the whole family to enjoy. What's more, the location is unbeatable: close to shops, restaurants and all the necessary amenities, yet maintaining the tranquility of a well-kept residential area.

With a property tax of around €1,000 per year and community fees of between €500 and €600 per quarter, this property represents a unique opportunity for those seeking space, comfort and an excellent location in Estepona.



# IDILIQ

ESTATES

