



R5226382

📍 El Faro

REF# R5226382    255.000 €

BEDS

1

BATHS

2

BUILT

61 m<sup>2</sup>

PLOT

60 m<sup>2</sup>

TERRACE

20 m<sup>2</sup>

This charming ground floor apartment stands out for its spacious feel, natural light, and the unique sensation of living in a small house rather than an apartment. It offers 61 m<sup>2</sup> built, smartly distributed to create a warm and welcoming home.

The highlight is the direct access to a private patio, complete with a covered porch and garden area — perfect for enjoying the outdoors, entertaining friends, or simply relaxing in total privacy.

In addition, residents can enjoy a beautiful communal pool and gardens with stunning sea views, creating the perfect setting for relaxation and leisure.

An ideal choice for those seeking comfort, brightness, and a cozy home with that extra sense of independence rarely found in a traditional apartment.

Don't miss the video to see everything this property has to offer!

???? Legal Notice – W.H. Properties

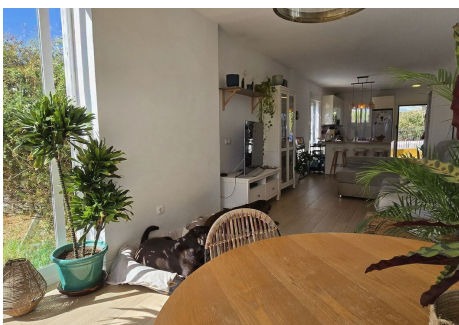
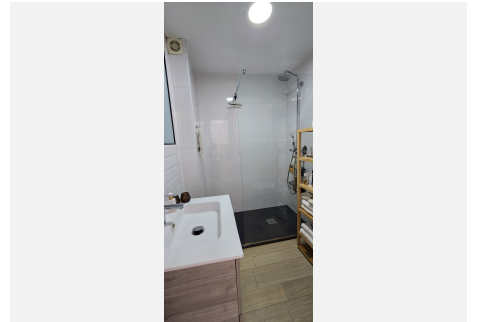
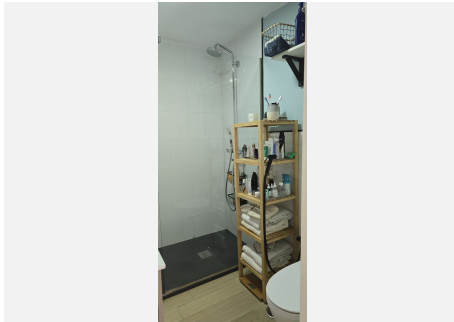
+34 951 123 083 | +44 (0)330 179 8687 | [info@idiliqestates.com](mailto:info@idiliqestates.com) Local 28, Edificio D, Centro de Negocios Puerta de Banús, N-340, Km 175, 29660 Nueva Andlucia



# IDILIQ

## ESTATES

The information provided in this listing is for informational purposes only and has no contractual value. It may contain errors, be subject to changes, or be withdrawn without prior notice. The details have been supplied by third parties and, although believed to be correct, their accuracy is not guaranteed. The price does not include purchase costs such as transfer tax/VAT, notary fees, land registry fees, or professional fees. All measurements and surface areas are approximate. Buyers are advised to verify any information they deem relevant independently.



# IDILIQ

ESTATES

