



R5221033

📍 La Mairena

REF# R5221033 435.000 €

BEDS

3

BATHS

2

BUILT

159 m²

Stunning 3-Bedroom Penthouse with Breathtaking Coastal Views in El Vicario, La Mairena

Located just 10 minutes above Elviria and Marbella's renowned beaches, this immaculate two-bedroom, two-bathroom penthouse is set within the tranquil community of El Vicario. While the area boasts a selection of restaurants and amenities, its true charm lies in the serenity it offers, combined with easy access to the vibrant Costa del Sol coastline and the prestigious La Cala Golf Resort. Additionally, the German-speaking school is conveniently nearby.

The gated community of El Vicario III offers magnificent views of the surrounding countryside and the Mediterranean Sea, extending towards the coastline of Fuengirola. These panoramic views can be enjoyed from all major rooms of the property, including the spacious east terrace. The community features beautifully maintained gardens, a communal pool, and padel tennis courts for residents' enjoyment.

This penthouse, situated on the top floor, is accessible via an elegant entrance hallway that leads into a large, square living room. This expansive space includes both dining and sitting areas, complemented by a

+34 951 123 083 | +44 (0)330 179 8687 | info@idiliqestates.com Local 28, Edificio D, Centro de Negocios Puerta de Banús, N-340, Km 175, 29660 Nueva Andlucia

IDILIQ

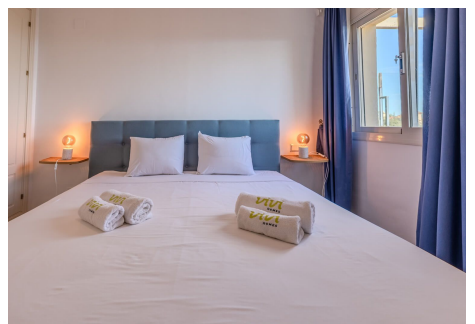
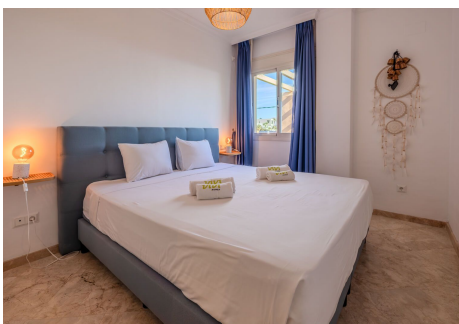
ESTATES

charming open fireplace. Direct access to the generous terrace enhances the living area, offering the perfect space for relaxation and al fresco dining, all while enjoying those captivating coastal views.

The kitchen is a good size and comes fully fitted with high-quality granite countertops and integrated appliances, including an oven, dishwasher, and fridge freezer. There is also a separate utility area with a washing machine and tumble dryer.

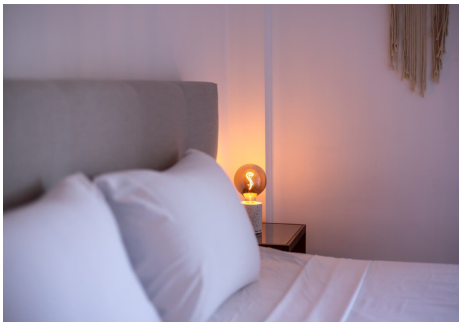
The master bedroom is both spacious and elegant, featuring direct access to the terrace, a large walk-in dressing room, and a luxurious en-suite bathroom with a walk-in shower and a bathtub with an additional shower overhead. The 2 other bedrooms are well-sized, with fitted wardrobes, and is served by an adjacent bathroom equipped with a large walk-in shower.

Additional features include hot and cold air conditioning, double glazing, and high-quality fitted windows throughout. The property also benefits from an allocated parking space and a convenient storeroom.



IDILIQ

ESTATES



IDILIQ

ESTATES

