



R5215612

📍 Benahavís

REF# R5215612 370.000 €

BEDS

2

BATHS

2

BUILT

99 m²

TERRACE

20 m²

Available for viewings, even though rented until July 2026

This exceptional apartment in the prestigious Parque Botánico urbanisation, nestled within the luxurious Los Flamingos enclave in Benahavís on the sun-kissed Costa del Sol, represents a rare opportunity for discerning buyers seeking an unparalleled blend of quality living, secure investment, and natural serenity. Currently rented until July 2026, it offers immediate rental income potential in a high-demand area known for its exclusivity and appreciation. Positioned between the glamour of Marbella and the charm of Estepona, this gated community—part of the renowned Los Flamingos resort—boasts breathtaking views over the Mediterranean Sea, majestic mountains, and three championship 18-hole golf courses, including the acclaimed Los Flamingos Golf. Just a short drive from Puerto Banús (10 minutes), San Pedro de Alcántara, international schools like the British International School of Marbella, supermarkets, and medical centres, it provides seamless access to the A-7 motorway while embracing a protected natural environment ideal for families or retirees craving tranquillity without isolation.

Spanning 99 m² of elegantly designed space on the third floor with convenient lift access and an east-facing orientation for morning sunlight, this bright and functional residence is perfect as a primary home or holiday

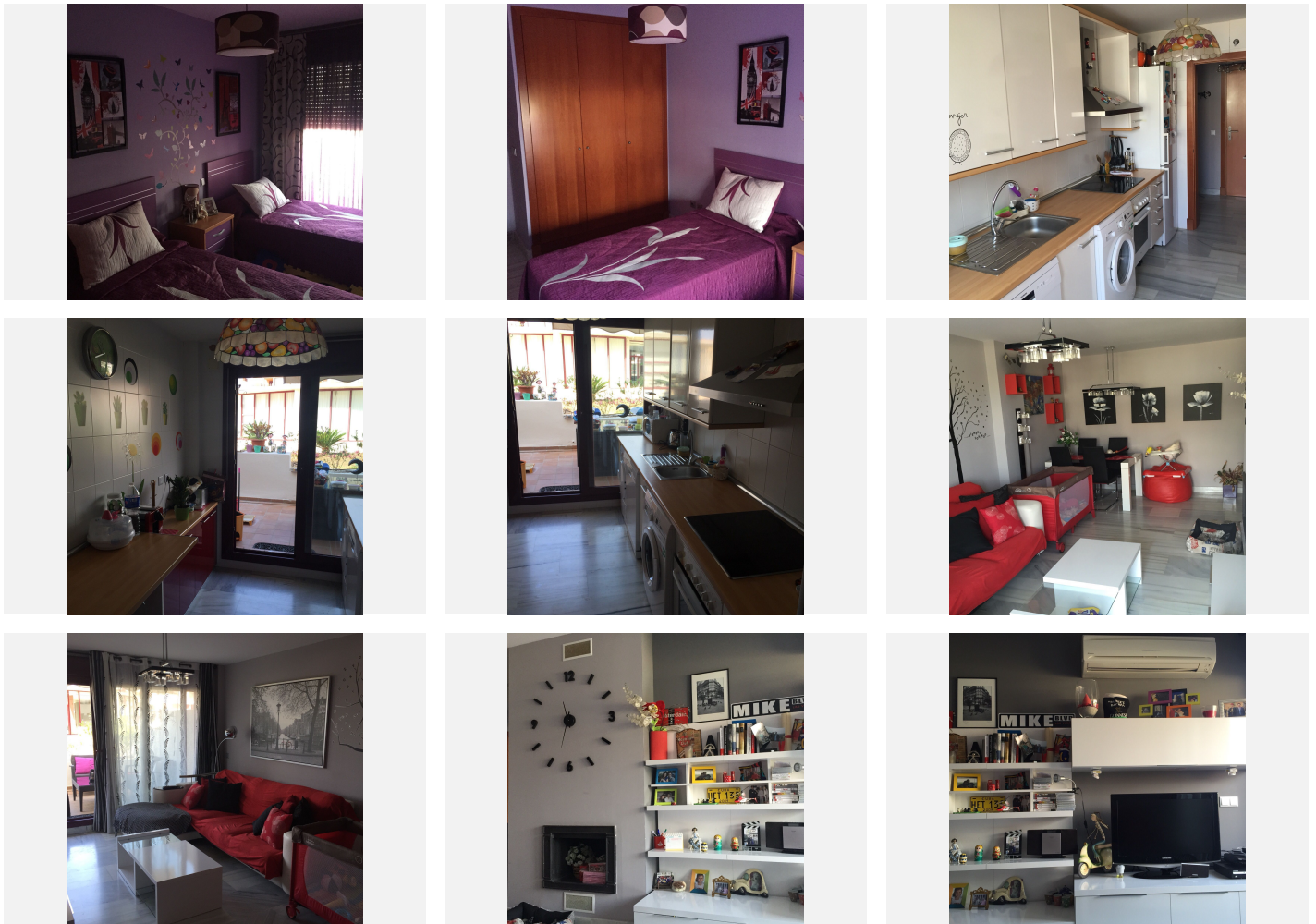
+34 951 123 083 | +44 (0)330 179 8687 | info@idiliqestates.com Local 28, Edificio D, Centro de Negocios Puerta de Banús, N-340, Km 175, 29660 Nueva Andalucía

IDILIQ

ESTATES

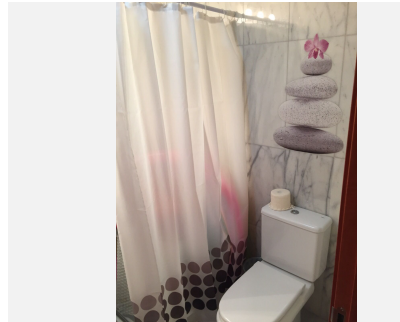
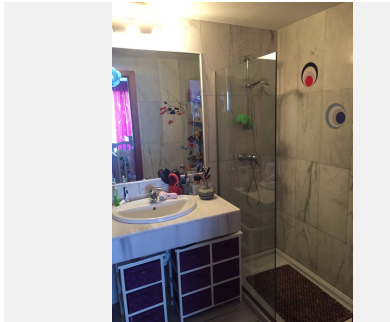
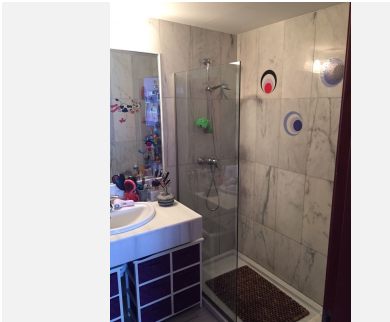
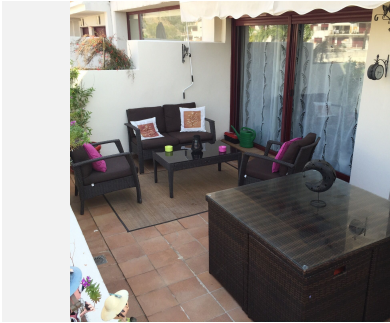
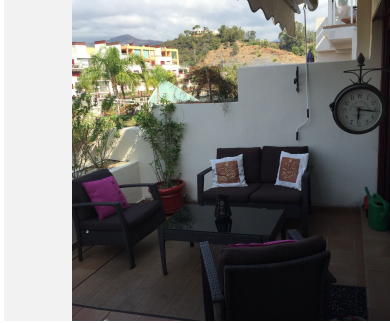
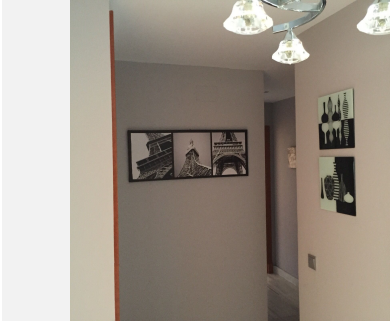
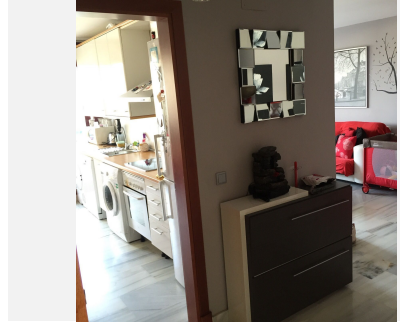
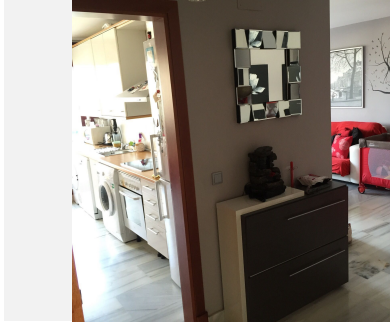
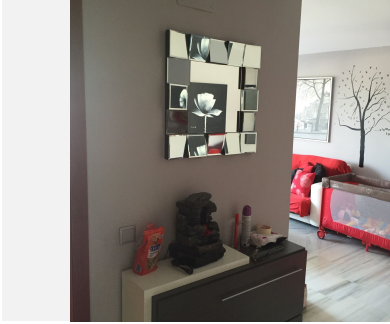
retreat. The layout features two spacious bedrooms with fitted wardrobes and en-suite bathrooms, a generous living-dining area flowing onto a private terrace with open vistas of tropical gardens and green spaces, and a fully equipped kitchen with high-end appliances. Premium finishes include marble flooring, bespoke carpentry, central air conditioning with individual heating, and energy-efficient systems earning an A-rated certificate for both consumption and emissions—ensuring low running costs and sustainability. Included in the price are a dedicated garage space and storage room, adding everyday convenience.

The secure, resort-style community offers 24-hour security, controlled access, outdoor and indoor swimming pools, a luxurious spa, state-of-the-art gym, tennis and paddle courts, and meticulously landscaped botanical gardens with winding paths, cascades, and exotic flora—creating a verdant oasis for relaxation. With impeccable maintenance and a consolidated residential atmosphere, Parque Botánico epitomises Mediterranean elegance. Whether for personal enjoyment or as a high-yield investment in Benahavís' thriving market—famed for over 300 sunny days a year, cultural vibrancy, and proximity to elite golf like Valle Romano—this property delivers comfort, exclusivity, and long-term value. Enquire today to secure your piece of paradise.



IDILIQ

ESTATES



IDILIQ

ESTATES

