



R5214289

📍 San Pedro de Alcántara

REF# R5214289 919.900 €

BEDS

3

BATHS

2

BUILT

130 m²

TERRACE

37 m²

MARE SAN PEDRO — more than just an apartment by the sea. It's a statement.

A contemporary residential complex on Mediterranean Avenue, just a few minutes' walk from the beach and the San Pedro promenade — one of the most charming and well-kept areas on the coast. Everything here is thoughtfully designed: peace, security, lush greenery, and at the same time, walking distance to restaurants, cafés, and all urban conveniences.

The three-bedroom apartment is spacious, bright, and features a large terrace overlooking tropical gardens and the swimming pool.

The layout is ideal: a living room with panoramic windows, a modern kitchen, a master bedroom with an en-suite bathroom, and additional bedrooms with natural light.

Finishes and materials are of the highest quality — clean, modern, and elegant.

The complex itself makes an impression: gated community, pool with sunbathing area, tropical landscaping, tidy walkways, and evening lighting. The atmosphere is that of a boutique resort — private and serene.

+34 951 123 083 | +44 (0)330 179 8687 | info@idiliqestates.com Local 28, Edificio D, Centro de Negocios Puerta de Banús, N-340, Km 175, 29660 Nueva Andalucía

Perfect location:

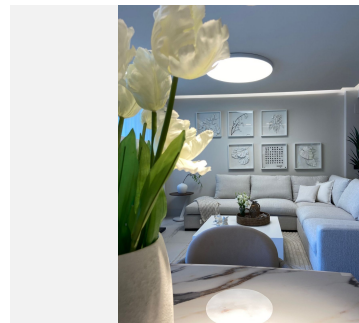
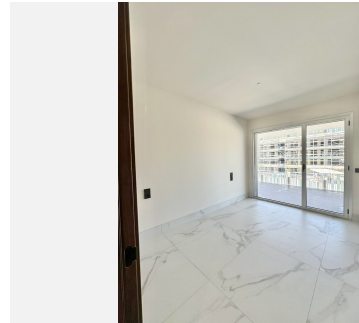
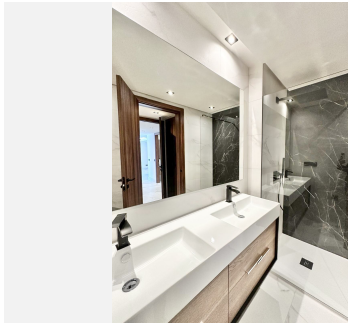
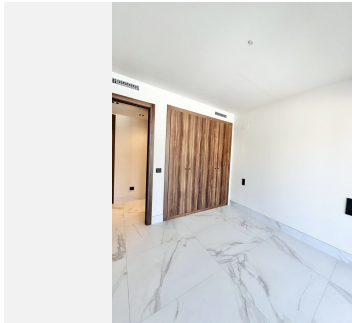
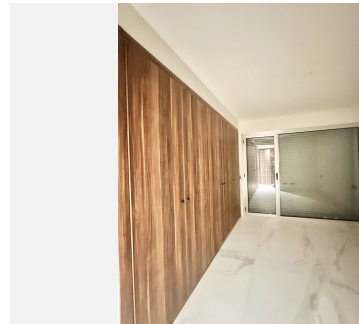
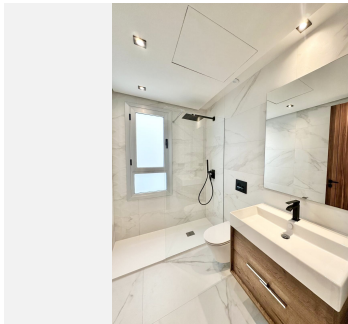
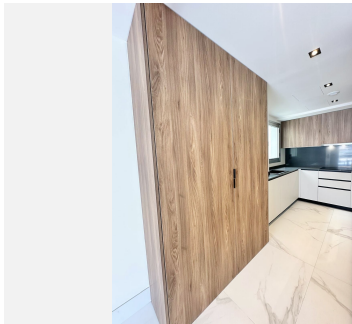
- 3 minutes' walk to the beach and promenade
- 5 minutes to El Corte Inglés
- 7 minutes to Puerto Banús
- 10 minutes to Marbella and the Golden Mile
- Close to top-rated international and private schools

This property is for those who value comfort, aesthetics, and quality of life — not just square meters.

MARE SAN PEDRO is move-in ready: the complex is completed, the surroundings are established, and the sea is just steps away.

You simply arrive — and start living.

If you're looking for a modern home by the sea with genuine value and long-term potential, this property deserves your attention



IDILIQ

ESTATES

