

IDILIQ

ESTATES



R5211964

 Nueva Andalucía

REF# R5211964 7.500.000 €

BEDS

6

BATHS

7

BUILT

1727 m²

PLOT

3400 m²

TERRACE

480 m²

Villa Herencia stands as a magnificent masterpiece of classic architecture, embodying timeless elegance and exceptional craftsmanship.

Gracefully positioned in Aloha, Nueva Andalucía- one of Marbella's most coveted addresses, this west-facing landmark residence sits on a 3,400 m² plot and captivates with its grand, refined appearance. Its 1,727 m² of interiors showcase soaring double-height ceilings, intricate woodwork, and hand-finished marble, creating spaces of enduring beauty and sophisticated character.

From the moment you pass through the grand gates, a sense of grandeur unfolds as artistry, privacy, and serenity blend harmoniously. Inside, bespoke detailing and architectural symmetry set the tone for classic luxury throughout.

The residence features six spacious bedroom suites, each with its own en-suite bathroom, plus an additional bathroom and five guest toilets, ideal for family living and large-scale hosting. Six further rooms provide dedicated spaces for dining, lounging, office, games, and entertainment. All three floors are

+34 951 123 083 | +44 (0)330 179 8687 | info@idiliqestates.com Local 28, Edificio D, Centro de Negocios Puerta de Banús, N-340, Km 175, 29660 Nueva Andalucía

IDILIQ

ESTATES

connected by an elevator, and underfloor heating throughout, along with individual air-conditioning units in every room, ensures absolute comfort.

The primary suite serves as a private retreat, complete with a large terrace offering panoramic views across the valley, the landscaped gardens, and glimpses of the Mediterranean Sea.

Living areas flow seamlessly into the lush gardens, complemented by more than 480 m² of terraces that create a perfect indoor-outdoor lifestyle. The grounds include a large swimming pool and a private tennis court, enhancing the estate's resort-style environment under the Mediterranean sun. A fully equipped outdoor kitchen adds convenience for dining with family and friends.

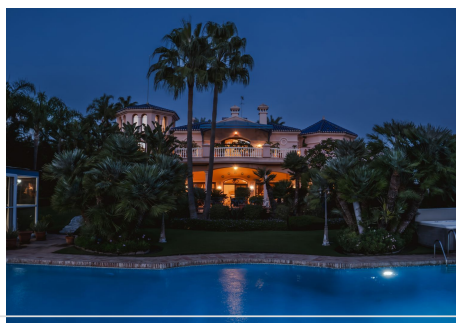
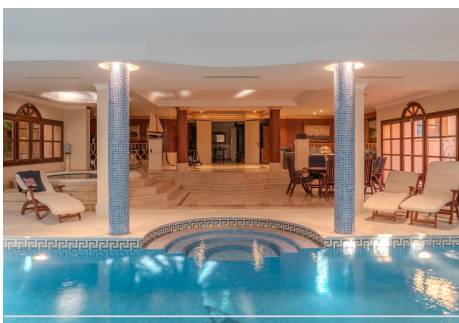
On the basement level, a dedicated wellness spa awaits, featuring an indoor heated pool, gym, sauna, and jacuzzi – fulfilling all leisure and fitness needs. A self-contained guest or staff studio further enhances the property's versatility.

The garage, accommodating up to 9 cars, offers both practicality and prestige, ideal for a collector.

Located in the exclusive area of Aloha, Nueva Andalucía, the property combines tranquility with exceptional accessibility. A short walk leads to Aloha Strip, Centro Plaza, or Puerto Banús, while Las Brisas, Aloha Golf, and Los Naranjos, three of Marbella's championship golf courses – are only minutes away.

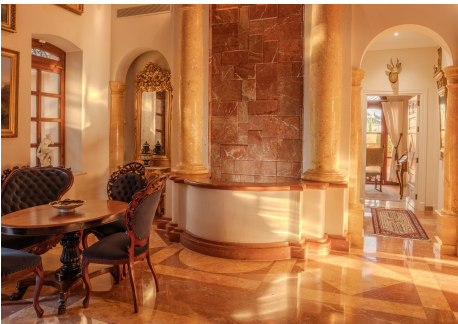
Nearby, you'll find fine dining, charming cafés, and esteemed international schools including Aloha College and Swans International.

Beyond its architectural and lifestyle appeal, the estate represents a rare investment opportunity, combining scale, location, and pedigree in one of Europe's most desirable real estate markets.



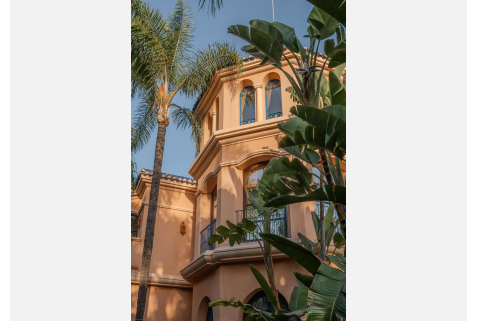
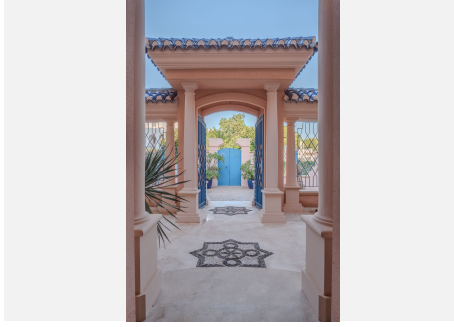
IDILIQ

ESTATES



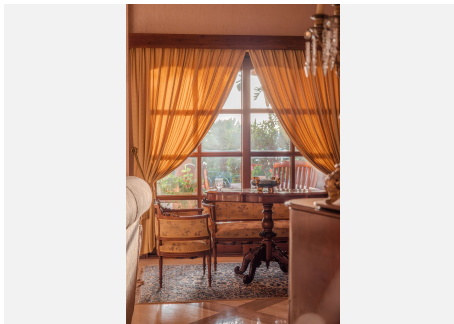
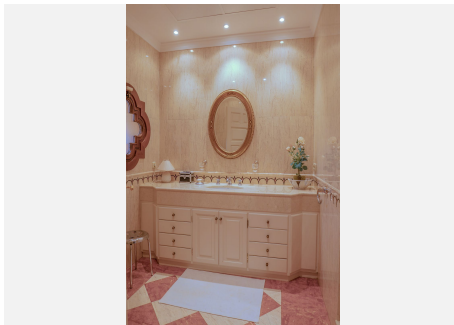
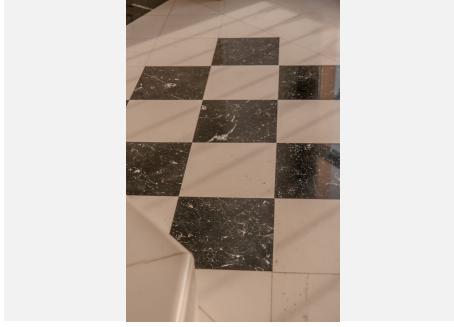
IDILIQ

ESTATES



IDILIQ

ESTATES



IDILIQ

ESTATES

