



R5199433

📍 Manilva

REF# R5199433 450.000 €

BEDS

3

BATHS

3

BUILT

125 m²

TERRACE

38 m²

Spacious Family Penthouse Duplex with Stunning Sea and Mountain Views

Discover your ideal family retreat in this fully furnished 3-bedroom, 3-bathroom penthouse duplex, perfectly located in a peaceful gated community just a short walk from the beach. Combining modern comfort with natural beauty, this bright and spacious home offers breathtaking views, privacy, and a relaxed coastal lifestyle.

Property Highlights

Bedrooms: 3

Bathrooms: 3 (one en-suite with bath)

Terraces: 2 large south and southwest-facing terraces with panoramic sea and mountain views

Parking & Storage: 2 underground parking spaces and a private storeroom

Community: Secure gated complex with 3 communal swimming pools and beautifully maintained gardens — perfect for families

+34 951 123 083 | +44 (0)330 179 8687 | info@idiliqestates.com Local 28, Edificio D, Centro de Negocios Puerta de Banús, N-340, Km 175, 29660 Nueva Andlucia

Layout

Ground Floor:

Spacious, bright living room with amazing sea and mountain views and direct access to the terrace — ideal for family BBQs, outdoor dining, and entertaining

Fully fitted modern kitchen

Bright bedroom with direct terrace access

Full bathroom with walk-in shower

Upper Floor:

Primary bedroom with en-suite bathroom featuring a bath

Second bedroom with a separate shower room

Private southwest-facing terrace offering open, tranquil views — a peaceful spot to relax and enjoy the scenery

Location & Lifestyle

Only 10 minutes' walk to beautiful beaches, beach bars, and family-friendly restaurants

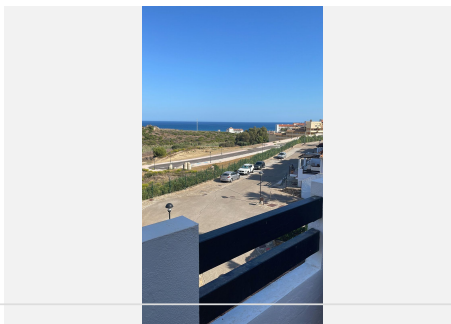
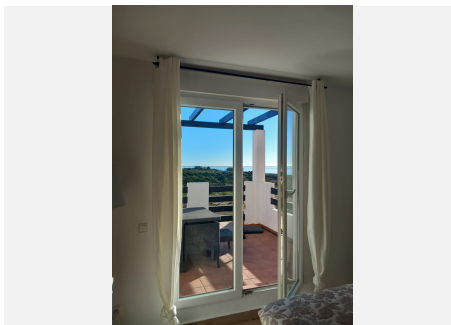
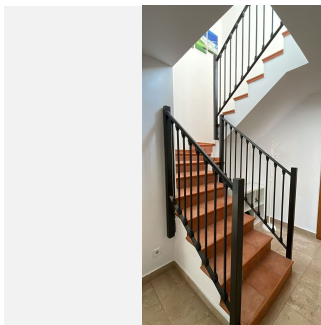
5 minutes by car to Duquesa Marina

15 minutes to Estepona and Sotogrande

30 minutes to Marbella

35 minutes from Gibraltar Airport and 55 minutes from Málaga Airport

Enjoy a perfect mix of comfort, space, and coastal charm — an ideal home for families seeking both tranquility and convenience.



IDILIQ

ESTATES

