



R5188291

📍 El Paraiso

REF# R5188291 595.000 €

BEDS

2

BATHS

2

BUILT

93 m²

TERRACE

113 m²

Modern Penthouse with Panoramic Sea, Golf & Mountain Views – Paraiso Pueblo, Benahavís

Discover this stunning south-facing modern penthouse in the charming community of Paraiso Pueblo, Benahavís — a peaceful luxury village nestled between Marbella and Estepona. Designed for both families and couples, this home offers a perfect blend of modern comfort, Mediterranean charm, and resort-style living.

Delivered in 2022 and offered fully furnished, this property is ready to move in and enjoy immediately, whether as a full-time residence, a family holiday retreat, or a strong rental investment.

—The Property—

This elegant 2-bedroom, 2-bathroom penthouse offers a total built area of 165 m², including 119 m² of outdoor space with a spectacular 94 m² private solarium — the perfect haven for sunbathing, dining, or entertaining while enjoying breathtaking panoramic sea, golf, mountain, and countryside views.

+34 951 123 083 | +44 (0)330 179 8687 | info@idiliqestates.com Local 28, Edificio D, Centro de Negocios Puerta de Banús, N-340, Km 175, 29660 Nueva Andlucia

The owners have invested in several high-end upgrades, including a pergola on the rooftop terrace with an adjustable sheet system for shade, and an ultra-luxury electric sun screen with a wind sensor on the lower terrace for automatic closure on windy days. The property also features a premium satellite TV system, high-end furniture, and designer finishes throughout, offering exceptional comfort and style.

The bright open-plan living and dining area connects seamlessly with the modern, fully fitted kitchen and opens directly onto the terrace — ideal for relaxed Mediterranean living and sunset views.

Additional features include marble flooring, air conditioning (hot & cold), double glazing, fitted wardrobes, fiber optic internet, a storage room, and underground parking space.

—Community & Lifestyle—

Paraiso Pueblo is a secure, gated complex with 24-hour security, designed as a Mediterranean-style village with cobbled plazas, landscaped gardens, and scenic walking paths. Residents enjoy an exceptional range of resort-style amenities, including:

- Six outdoor swimming pools and a heated indoor pool for year-round enjoyment
- Children's pool and playground ideal for families
- Fully equipped gym and wellness area with sauna
- On-site restaurant serving Mediterranean and international cuisine
- Co-working space perfect for remote professionals and digital nomads
- Beautiful communal gardens and family-friendly recreation areas

With its combination of luxury facilities and a warm community atmosphere, Paraiso Pueblo is ideal for families with children as well as couples seeking tranquillity, comfort, and convenience.

—Location—

Perfectly located in the heart of the New Golden Mile, Paraiso Pueblo offers easy access to all nearby attractions:

- 5 minutes to the beach
- 3 minutes to El Paraíso Golf and Atalaya Golf
- 10 minutes to Puerto Banús
- 15 minutes to Marbella
- 45 minutes to Málaga Airport

—Investment Potential—

This penthouse not only offers an exceptional lifestyle but also excellent rental potential, thanks to its modern design, family-friendly amenities, and prime location close to golf, beaches, and services. Perfect for both short-term holiday rentals and long-term stays.

—Summary—

IDILIQ

ESTATES

2 Bedrooms | 2 Bathrooms | 165 m² Built | 119 m² Outdoor Area | 94 m² Private Solarium

South-facing with panoramic Sea, Golf, and Mountain views

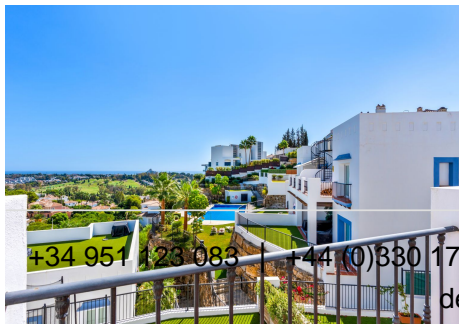
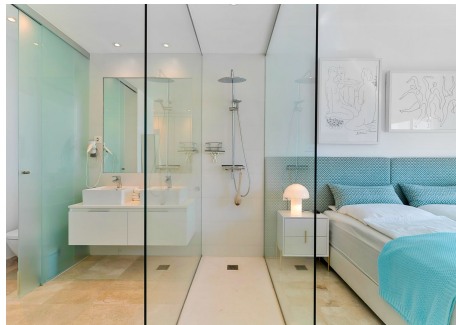
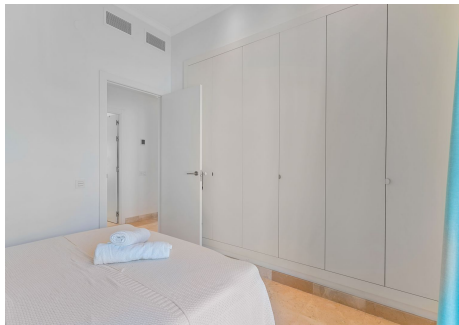
Fully furnished and move-in ready

Underground parking + storage room

Luxury gated community with 24h security, 6 outdoor pools, heated indoor pool, gym, sauna, restaurant, co-working space & children's playground

Upgraded with luxury pergola, wind-sensor sun screen, premium satellite TV, and designer furnishings

This penthouse is the perfect combination of modern comfort, family living, and Mediterranean elegance — a true lifestyle opportunity in one of the Costa del Sol's most desirable locations.



+34 951 123 085 | +44 (0)330 179 8687 | info@idiliqestates.com | Local 28, Edificio D/Centro de Negocios Puerta de Banús, N-340, Km 175, 29660 Nueva Andalucía

IDILIQ

ESTATES



IDILIQ

ESTATES

