



R5181274

📍 Torrenueva

REF# R5181274 339.000 €

BEDS

2

BATHS

2

BUILT

79 m²

TERRACE

10 m²

Superb South-Facing Apartment with Panoramic Sea Views – Just Steps from the Beach

This beautifully presented second-floor apartment offers breath taking panoramic sea views and enjoys an ideal south-facing orientation. Conveniently accessible via a lift, the property has been recently renovated, featuring a contemporary kitchen and stylish modern bathrooms, making it the perfect holiday home or investment opportunity.

Located just minutes' walk from the beach, shops, restaurants, and bars, the apartment is part of a well-maintained community offering excellent shared facilities. These include a large communal swimming pool, a separate gated children's pool, beautifully landscaped gardens with sun loungers, and a terraced BBQ area ideal for social gatherings.

The apartment comprises:

Entrance hallway

+34 951 123 083 | +44 (0)330 179 8687 | info@idiliqestates.com Local 28, Edificio D, Centro de Negocios Puerta de Banús, N-340, Km 175, 29660 Nueva Andlucia

IDILIQ

ESTATES

Bright, open-plan living and dining area with a fully fitted modern kitchen and a charming open fireplace

Covered terrace with sliding glass doors and stunning sea views

Two spacious double bedrooms with fitted wardrobes

Two contemporary bathrooms

Additional features:

Marble flooring throughout

Ceiling fans

Lift access

Communal gated parking

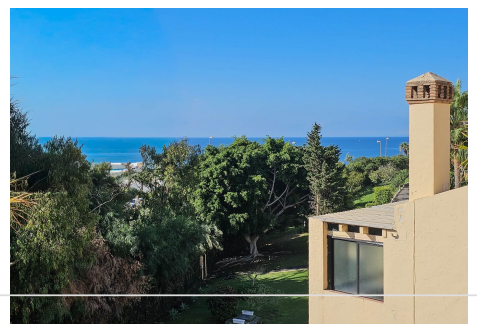
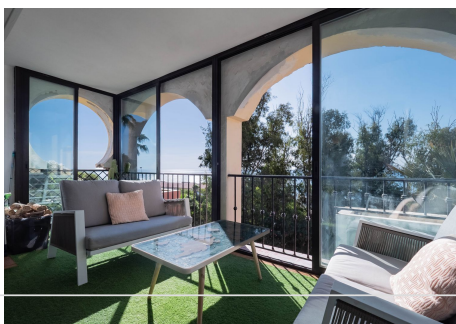
Private terrace with direct beach access

Walking distance to all local amenities

Excellent access to public transport

Close to La Cala de Mijas, one of the Costa del Sol's most sought-after coastal towns

Whether you're looking for a seaside getaway, a lucrative rental investment, or a permanent residence by the sea, this apartment offers unbeatable location and lifestyle.



+34 951 123 083 | +44 (0)330 179 8687 | info@idiliqestates.com Local 28, Edificio D, Centro de Negocios Puerta de Banús, N-340, Km 175, 29660 Nueva Andlucia

IDILIQ

ESTATES

