

IDILIQ

ESTATES



R5177557

📍 Estepona

REF# R5177557 996.000 €

BEDS

4

BATHS

3

BUILT

134 m²

PLOT

3543 m²

TERRACE

73 m²

Perched on the hills of Los Reales, just above Estepona, this charming family villa blends traditional Andalusian character with modern comfort.

Its elevated position offers sweeping views stretching from Gibraltar to the west to the dramatic Sierra Bermeja mountains to the north. The neighborhood is a mix of year-round Spanish residents and international homeowners, each enjoying spacious plots with lush greenery that provide privacy while still fostering a welcoming sense of community.

This single-level villa has a practical, flowing layout yet showcases the authentic charm of a country retreat. Details such as vaulted and beamed ceilings, rustic stonework, and decorative wrought iron add warmth and personality. A separate guest suite, accessed via an exterior staircase from the patio, provides privacy for visitors. The elegant driveway, olive trees, water features, and orchard create the feel of a miniature finca. The landscaped garden is a true highlight, with a pool framed by rose beds, flowering shrubs, and the fragrance of jasmine and lavender. Fruit trees are tucked away in a quiet corner, adding to the sense of Mediterranean abundance.

Additional features include two covered parking spaces, full fencing around the property, and convenient access—just a 5-6 minute drive into Estepona. Along the way, you'll find a gym, small supermarket, and

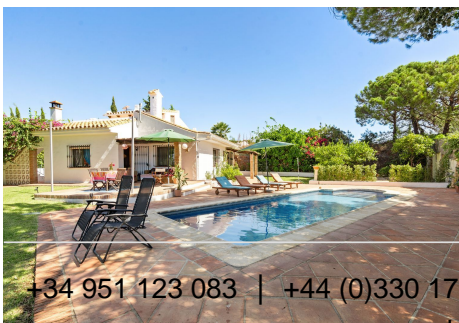
+34 951 123 083 | +34 (0)330 179 8687 | info@idiliqestates.com Local 28, Edificio D, Centro de Negocios Puerta de Banús, N-340, Km 175, 29660 Nueva Andlucia

IDILIQ

ESTATES

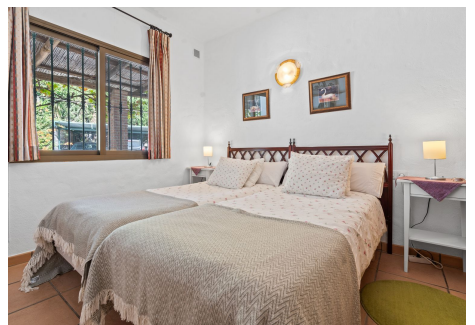
restaurants.

The main entrance is through a covered outdoor kitchen and dining area, complete with a traditional wood-fired oven ideal for al fresco meals. From here, you step into the rustic-style kitchen with black-and-white tiled floors, ample storage, and dual-aspect windows. The master suite lies just ahead, featuring high ceilings with exposed beams, fitted wardrobes, and an en-suite bathroom with views over the rose garden. Off a side corridor, you'll find a vibrant tiled bathroom with shower and laundry facilities, followed by two inviting guest bedrooms. The spacious living room accommodates both a large dining table and a lounge area, anchored by a cozy fireplace. Directly outside, a covered terrace offers the perfect spot for evening drinks while enjoying the scenery.



IDILIQ

ESTATES



IDILIQ

ESTATES

