

IDILIQ

ESTATES



R5177461

📍 Alhaurín de la Torre

REF# R5177461 1.690.000 €

BEDS

4

BATHS

4

BUILT

350 m²

PLOT

5000 m²

TERRACE

120 m²

A Magnificent luxury Villa in a beautiful countryside Finca setting with panoramic Mountain, Valley and Sea views.

The entrance hall opens to show the impressive winding gallery staircase highlighting the three floors. In this entrance hall you have a separate wc and understairs storage space..

Double doors access the grand Salon/Lounge with over 70m² of space and full of light and an amazing feel good factor. Very bright and welcoming. Facilities in the lounge include full underfloor heating, hot and cold ducted air conditioning and a wall mounted feature fireplace.

A beautiful dining area is between the lounge and the kitchen. Moving into the kitchen which has a large centre island/breakfast bar fully fitted with modern appliances. This space is bright as well as large and has three double patio doors leading out to the terraces, gardens and swimming pool.

From the kitchen you also have access to a utility room which is fitted with Laundry machines sink etc

From the entrance hall you climb the stairs to the first floor landing and here you find the first of the huge double bedrooms complete with ensuite (Bath, shower wc and sink) and private dressing room. Patio doors lead out to a large terrace with amazing valley and mountain views.

Again from the landing you have access to the second large double bedroom which is also ensuite (large

+34 951 123 083 | +44 (0)330 179 8687 | info@idiliqestates.com Local 28, Edificio D, Centro de Negocios Puerta

de Banús, N-340, Km 175, 29660 Nueva Andalucía

IDILIQ

ESTATES

shower, wc and sink) This bedroom has Triple aspect patio doors leading to a large terrace and again with fantastic views of the valley, mountains and towards Malaga bay.

On the same first floor landing you have the machinery room which has the electronic systems that control the home demotics and underfloor heating etc.

Take the stairs from the landing and go upwards to the 2nd floor landing here you will find a very large walk in showerwetroom complete with wc and sink

Bedroom three is another large double with double aspect patio doors leading on to a large private terrace with sweeping views down to the sea at Malaga bay.

Bedroom four is another large double, again with double aspect windows and patio doors leading to another large private terrace complete with amazing sea views

Overall view. The Villa is fully alarmed and has a demotic home package you can control on your smart phone

Principal access is through electric gates leading to parking for half a dozen vehicles

The gardens are set out in different areas with shaded deck areas to avoid the midday sun to serene seating area around the hidden water feature. Around the house you have expansive terraced seating areas for all your entertaining needs, complete with extensive outdoor lighting systems and sail shades to keep you cool.

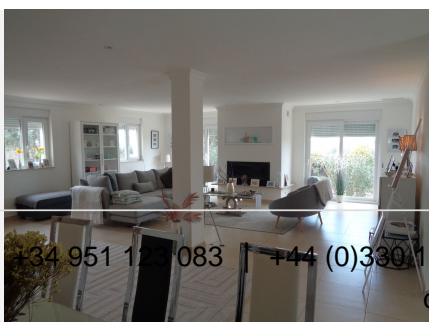
The 9 metre by 5 metre swimming pool has romano steps for easy access to the terraced areas and also several BBQ areas

At the back of the property you have a seperate area for water storage, Air Con units and several storage units

From the swimming pool area the garden footpath meanders through the grounds, past the herbs, flowers and fig trees leading to a grassed area with olive trees .

In this area you have also a wooden chalet ideal for a craft/hobby workshop complete with lighting and heating (hot and cold air con)

Finally to come to the second access gates to the property (more parking available) perfect for the gardeners access.



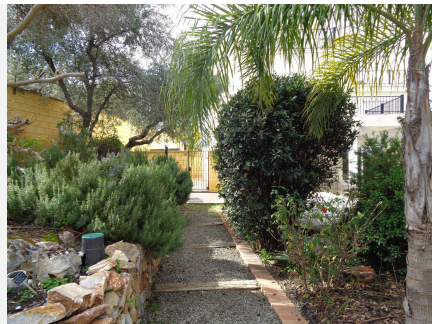
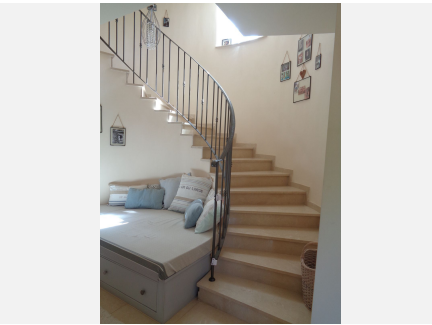
IDILIQ

ESTATES



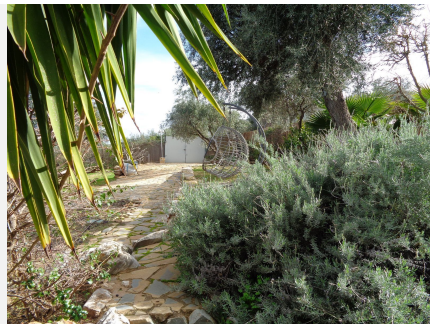
IDILIQ

ESTATES



IDILIQ

ESTATES



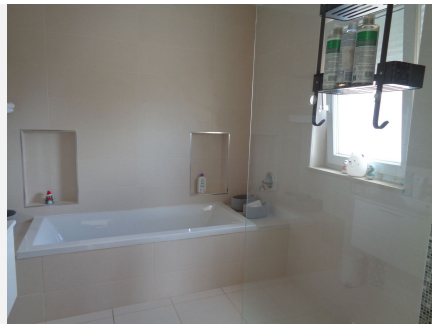
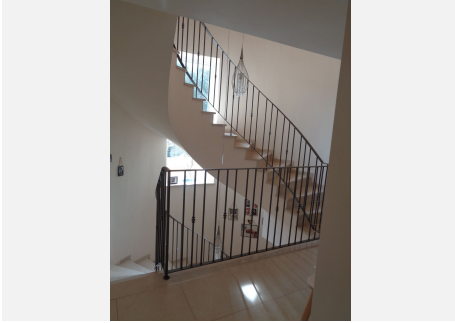
IDILIQ

ESTATES



IDILIQ

ESTATES



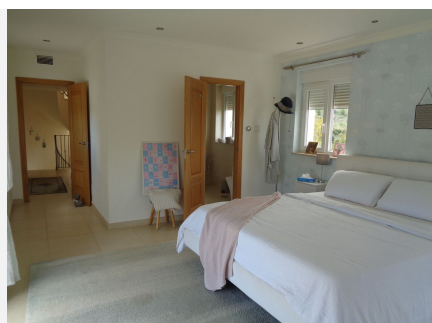
IDILIQ

ESTATES



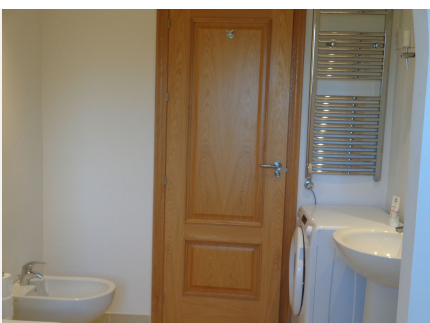
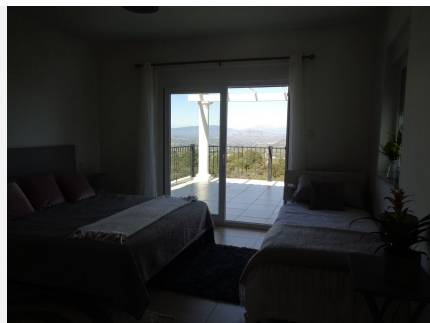
IDILIQ

ESTATES



IDILIQ

ESTATES



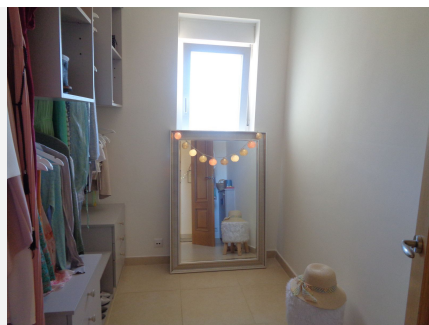
IDILIQ

ESTATES



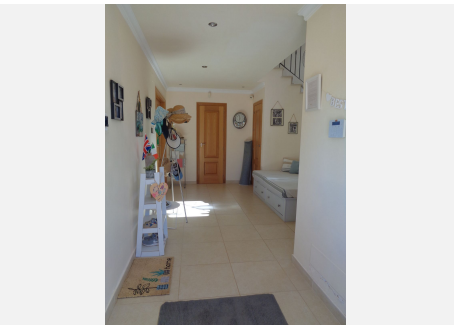
IDILIQ

ESTATES



IDILIQ

ESTATES



IDILIQ

ESTATES



IDILIQ

ESTATES

