



R5173753

📍 Estepona

REF# R5173753 730.000 €

BEDS

3

BATHS

3

BUILT

112 m²

PLOT

50 m²

TERRACE

10 m²

Dream Groundfloor Apartment in Benatalaya

Discover true peace and elegance with this stunning ground-floor apartment in the prestigious Benatalaya complex. Bright, spacious, and beautifully furnished (furniture inclusive!), it offers an inviting open-plan living and dining area with direct access to your private terrace and garden, a perfect spot to relax, entertain, or simply enjoy the tranquility. This home features three en-suite bedrooms, a fully equipped modern kitchen with laundry area, plus the convenience of two parking spaces and a large storage room. And yes, it comes furnished, ready for you to move in. Life at Benatalaya is all about wellness and comfort. Residents enjoy 5 swimming pools (including 1 indoor heated pool), a fully equipped gym, spa, sauna, and lush tropical gardens. It's so peaceful here, you'll hear nothing but nature. For golf lovers, this property offers something truly unique: direct access to Atalaya Golf, and with your purchase, you'll even become a shareholder of the Atalaya Golf & Country Club. Practicality meets investment security: the community has already approved the Tourist Licence, giving you the flexibility of high rental potential alongside the perfect holiday or permanent home. Located just minutes from Puerto Banús, Marbella, and Estepona, and surrounded by international schools and world-class golf courses, this property is a rare opportunity to combine lifestyle,

+34 951 123 083 | +44 (0)330 179 8687 | info@idiliqestates.com Local 28, Edificio D, Centro de Negocios Puerta de Banús, N-340, Km 175, 29660 Nueva Andlucia

IDILIQ

ESTATES

luxury, and smart investment.

Basic features:

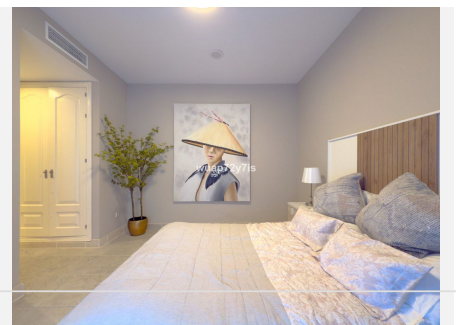
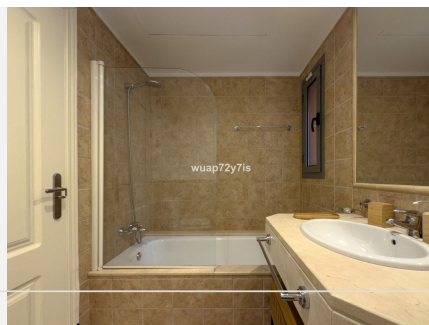
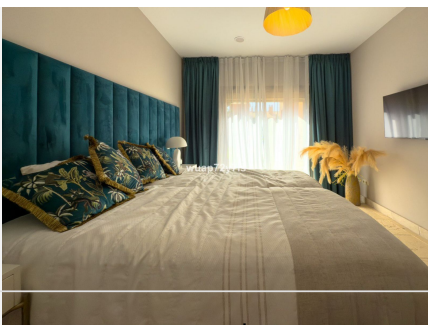
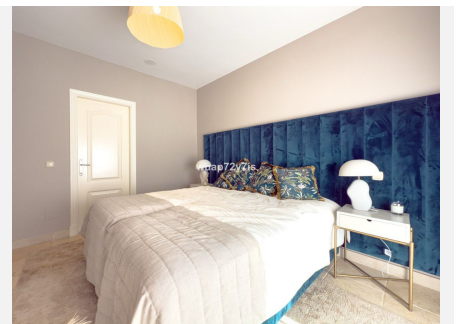
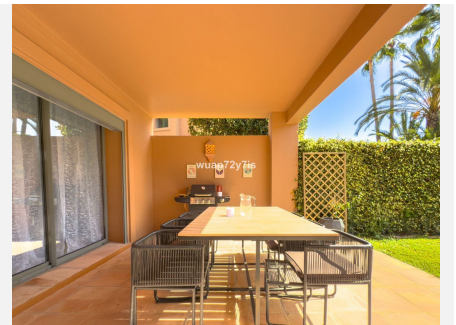
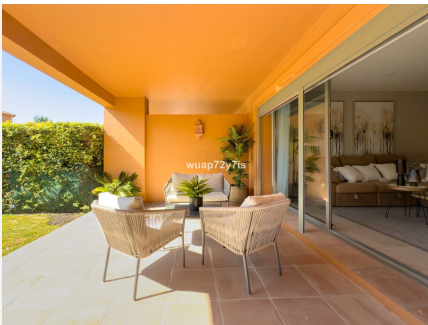
183 m² built

112 m² usable space

3 bedrooms, all en-suite

Furniture included

2 parking spots + large storage room



+34 951 123 083 | +44 (0)330 179 8687 | info@idiliqestates.com Local 28, Edificio D, Centro de Negocios Puerta de Banús, N-340, Km 175, 29660 Nueva Andlucia

IDILIQ

ESTATES

