



R5166559

📍 La Duquesa

REF# R5166559 330.000 €

BEDS

3

BATHS

2

BUILT

125 m²

TERRACE

60 m²

FANTASTIC CORNER TOWNHOUSE WITH TERRACE AND PANORAMIC SEA AND MOUNTAIN VIEWS. Located in the area of La Duquesa, in a quiet complex surrounded by nature. The house has been recently renovated, with a modern and uncluttered design. Distributed over two floors, on the lower floor we find the spacious living room with fireplace, dining room, separate kitchen, two bedrooms, two bathrooms and a large patio, on the upper floor the master bedroom with a terrace offering spectacular views over the mountain and the sea.

Situated in the Duquesa area, between the charming Puerto Deportivo and the prestigious Sotogrande development, this home offers the best of both worlds: the tranquillity of a natural setting and the convenience of having all amenities at your fingertips. With beautiful beaches just 2km away and a variety of restaurants to choose from.

In addition, the picturesque fishing village of Sabinillas is less than a 10-minute drive away, while the town of Estepona is just 10 minutes away, offering a wide range of shops, entertainment and cultural activities to enjoy.

In short, this townhouse is much more than just a property; it is a haven where natural beauty combines with comfort and convenience to create an unrivalled lifestyle. Don't miss the opportunity to make your dreams

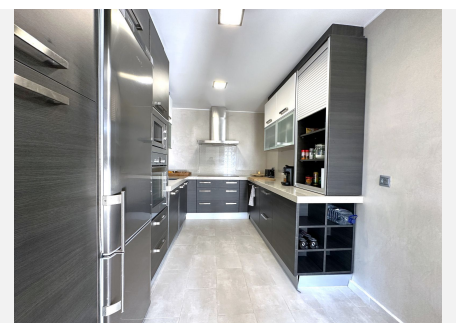
+34 951 123 083 | +34 (0)330 179 8687 | info@idiliquestates.com Local 28, Edificio D, Centro de Negocios Puerta de Banús, N-340, Km 175, 29660 Nueva Andalucía



# IDILIQ

ESTATES

come true and schedule a viewing today!





# IDILIQ

ESTATES

