



R5162155

📍 Benahavís

REF# R5162155 1.199.000 €

BEDS

4

BATHS

4

BUILT

334 m²

PLOT

250 m²

TERRACE

250 m²

GRAND VIEW — the address that whispers the sea

Perched in El Paraíso Alto, this corner townhouse of 225 m², southeast-facing, is a poem of panorama: every room opens onto the Mediterranean and the iconic silhouette of La Concha. Set within a gated, monitored community where three pools nestle among pine and greenery, the property strikes a rare balance of security, privacy and breathtaking views.

The ground floor welcomes you with a generous living area anchored by a fireplace, flowing into an open kitchen with island and a bright dining space. Panoramic windows dissolve the interior into a large terrace that frames sea and mountain vistas — perfect for golden breakfasts or evenings at sunset. A guest WC completes this level.

Upstairs, the master suite is a private refuge with an en-suite bathroom and a large walk-in closet. Two further bedrooms share a generous bathroom; all bathrooms combine showers and bathtubs for everyday comfort. Built-in wardrobes and expansive terraces with panoramic views add practical elegance.

+34 951 123 083 | +44 (0)330 179 8687 | [info@idiliqestates.com](mailto:info@idiliqestates.com) Local 28, Edificio D, Centro de Negocios Puerta de Banús, N-340, Km 175, 29660 Nueva Andalucía

The garden is an outdoor living room: a designed barbecue area with stylish garden furniture, a chill?out corner, an outdoor shower and a six?person jacuzzi create an ideal setting for relaxation. The fourth bedroom is at garden level and features an independent entrance — a studio of approximately 45 m<sup>2</sup> with a kitchenette, seating area and a shower bathroom, perfect for guests, residents or short?term rental. A tourist license is in place.

A private underground garage provides a large parking space with room for two cars and an adjacent storage room. Fully renovated in 2024, the home requires no further expense and is finished with high?quality materials — marble floors and staircase, travertine bathrooms and solid wood interior doors and wardrobes. The property is also notable for generous storage throughout. Comfort features include solar panels for hot water, air conditioning with heating and cooling, a fireplace, garden irrigation and outdoor lighting.

#### Key features

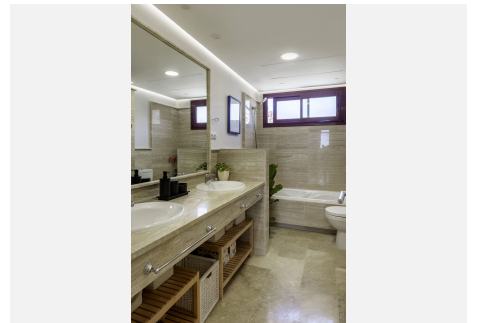
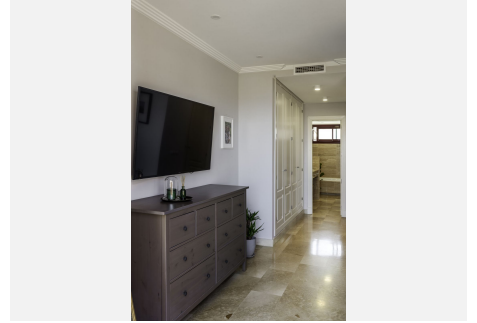
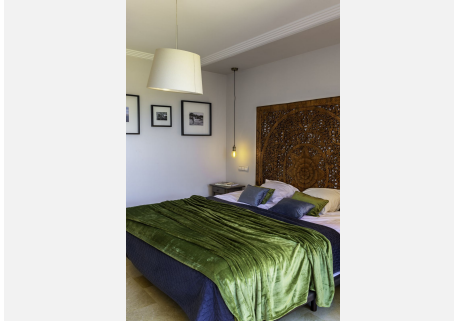
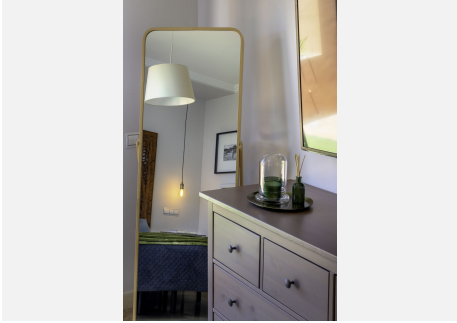
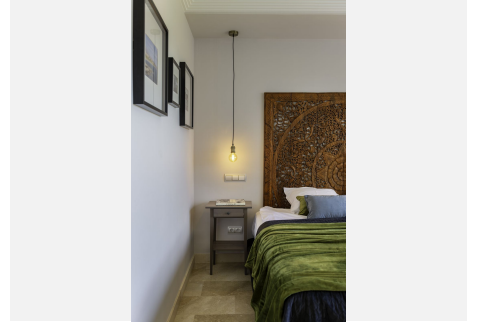
- Living area: 225 m<sup>2</sup>
- Orientation: southeast
- Location: El Paraíso Alto (Benahavis) — gated and guarded community
- Communal pools: 3
- Bedrooms: 4 (including an independent garden studio ~45 m<sup>2</sup>)
- Bathrooms: 3 + guest WC
- Garden with BBQ area, chill?out corner, outdoor shower and six?person jacuzzi
- Panoramic terraces with sea and La Concha mountain views
- Private garage (space for 2 cars) + storage room
- Fully renovated 2024 with high?end finishes (marble, travertine, solid wood)
- Equipment: solar panels for hot water, reversible air conditioning, fireplace, irrigation and garden lighting
- Tourist license active
- Benahavis location — reasonable local taxes and community access

Grand View is more than a home: it's a lookout where everyday life takes on the ease of a holiday. I'd be happy to arrange a viewing or send detailed plans and photos.



# IDILIQ

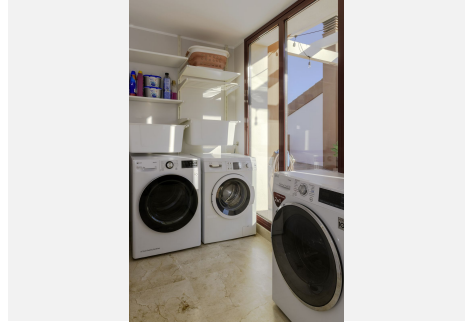
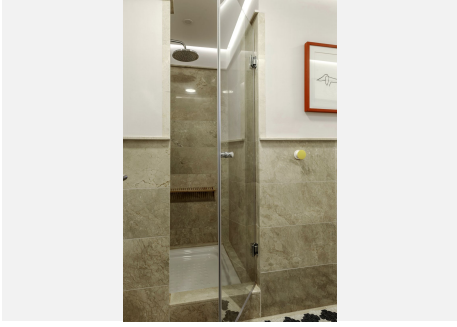
ESTATES





# IDILIQ

ESTATES





# IDILIQ

ESTATES

