



PENTHOUSE 2 BEDROOMS 1 BATHROOM IN ALHAURÍN EL GRANDE

 Alhaurín el Grande

REF# R5160781 349.000 €

BEDS

2

BATHS

1

BUILT

85 m²

TERRACE

31 m²

Two-bedroom penthouse for sale located in the upper part of Alhaurín el Grande. It has two large terraces with unbeatable views of the area. From the front terrace, measuring 14 m², you can admire the Sierra de Mijas mountains, and the rear terrace, measuring 16.5 m², offers sweeping panoramic views of the town of Alhaurín el Grande and the Sierra de las Nieves mountains.

The apartment, located on the third floor with an elevator, is completely exterior and has large windows, including in the kitchen and bathroom, providing plenty of light even on the cloudiest days. Its magnificent orientation allows you to enjoy the outdoor areas both in summer and winter. The exterior is equipped with five awnings (three in the front and two in back) that provide magnificent shade, necessary on warm summer days. The rear terrace has indirect lighting (outdoor spotlights) and automatic watering equipment for plants, even reaching the pots in the kitchen window. Inside, the home also features hot/cold air conditioning and an Air Zone device to independently control the temperature of each room. The flooring is marble, and the windows are double-glazed aluminium.

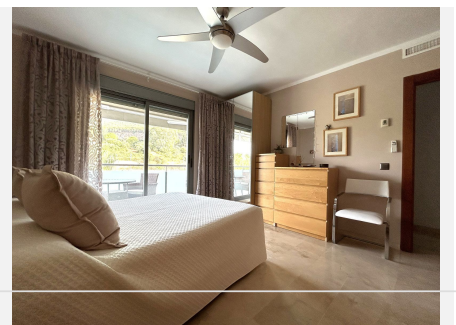
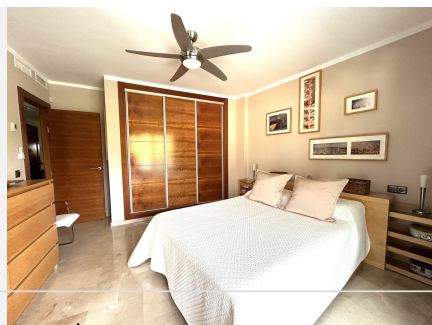
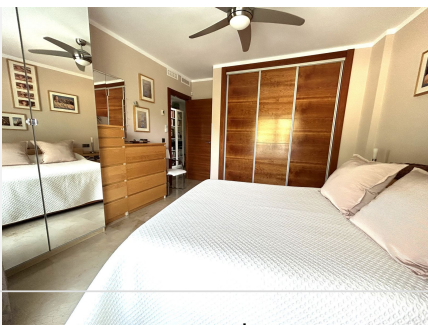
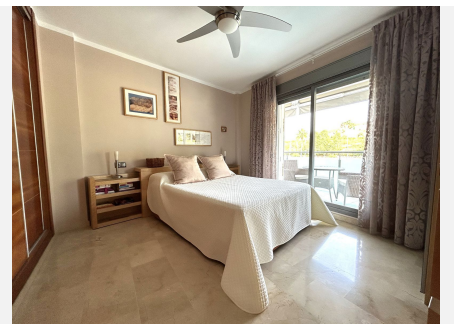
+34 951 123 083 | +44 (0)330 179 8687 | info@idiliqestates.com Local 28, Edificio D, Centro de Negocios Puerta de Banús, N-340, Km 175, 29660 Nueva Andlucia

IDILIQ

ESTATES

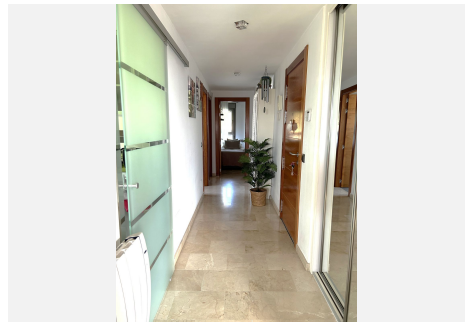
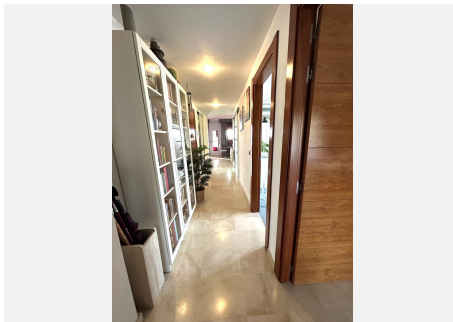
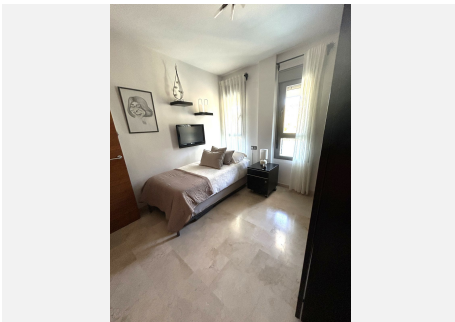
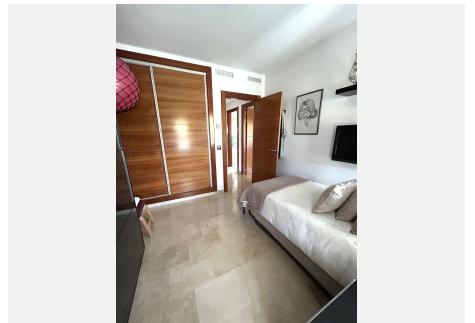
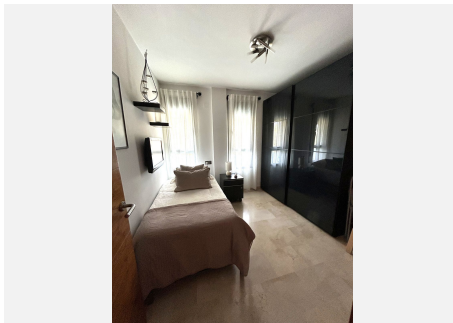
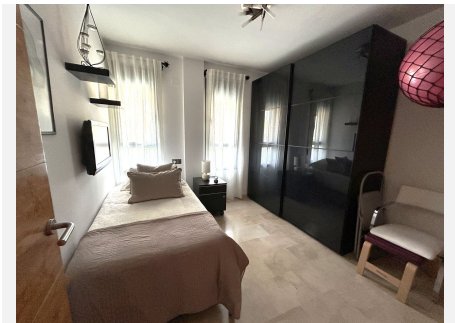
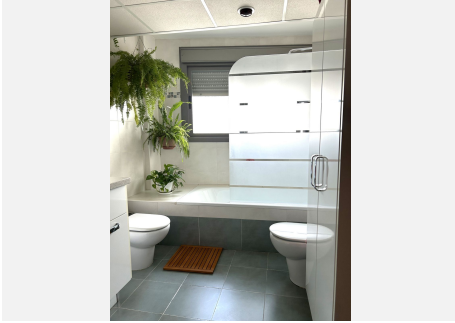
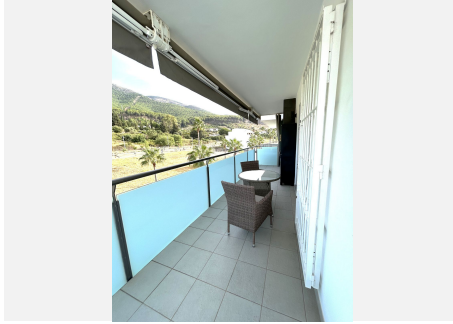
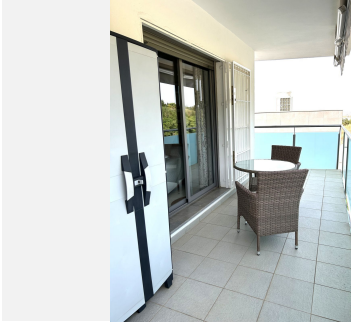
The apartment is sold furnished and comes with top-brand appliances, mainly Bosch and Balay. The built-in wardrobes are equipped with sliding shelves and various accessories, such as shoe and trouser racks. This home includes a large garage space (up to two vehicles depending on size) and a generously sized storage room, with additional ceiling height of over 10 m2.

Everything is close by: town centre, the health center, schools, shops, and restaurants. There is also plenty of parking in the surrounding streets. Málaga airport and the beaches are a 25-minute drive away. Come see it!



IDILIQ

ESTATES



IDILIQ

ESTATES

