



R5154784

📍 Torremuelle

REF# R5154784 1.295.000 €

BEDS

4

BATHS

4

BUILT

314 m<sup>2</sup>

= A Modern Villa with Exceptional Views and Next-Level Comfort =

Welcome to a home that truly stands out – even in an area known for quality living.

This exclusive property in Torremuelle, Benalmádena isn't just spacious and well-designed it offers something truly rare:

Uninterrupted views, premium community features, and thoughtful upgrades that make daily life effortlessly smooth.

Highlights include:

= 314 m<sup>2</sup> of modern living space across three levels – with the option to add a 5th bedroom

= 4 bedrooms, 4 bathrooms, and 1 guest toilet

= 2 living rooms with sea views and amazing natural light

= The best view in the entire community – overlooking the sea and Fuengirola

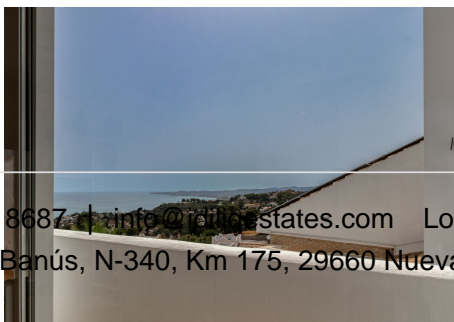
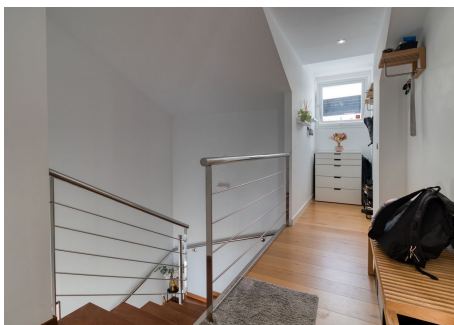
+34 951 123 083 | +44 (0)330 179 8687 | [info@idiliqestates.com](mailto:info@idiliqestates.com) Local 28, Edificio D, Centro de Negocios Puerta de Banús, N-340, Km 175, 29660 Nueva Andalucía

# IDILIQ

ESTATES

- = Brand new 13 kW solar panel system + 11 kW battery pack – energy efficient and future-proof
- = Private garage and new exterior tiling throughout
- = Jacuzzi, outdoor shower, and covered outdoor kitchen
- = Infinity pool (open year-round), fully equipped gym, and co-working area
- = Exclusive clubhouse available for private events
- = Located right next to a peaceful olive-tree park
- = Just a 15-minute walk to Torremuelle train station
- = Just 20 minutes from the airport and close to charming Benalmádena Pueblo

Its modern architecture, unbeatable views, and high-end features, this is more than a home. It's a place to thrive.



+34 951 123 083 | (0)330 179 8687 | [info@idiliq-estates.com](mailto:info@idiliq-estates.com) Local 28, Edificio D, Centro de Negocios Puerta de Banús, N-340, Km 175, 29660 Nueva Andalucía

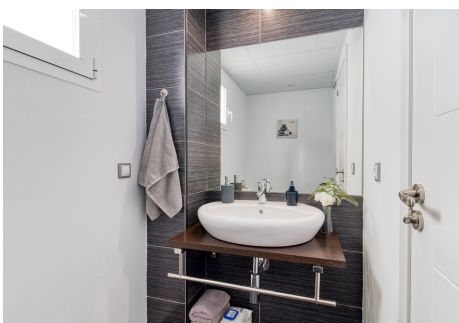
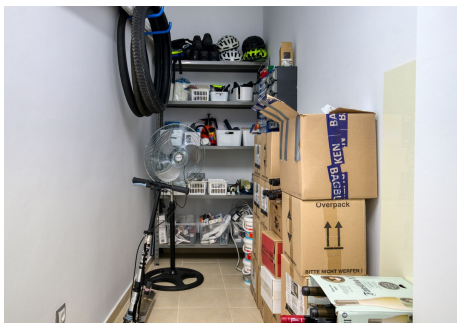
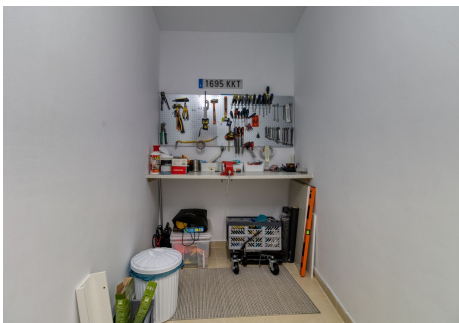
# IDILIQ

ESTATES



# IDILIQ

ESTATES



# IDILIQ

## ESTATES

