



R5152909

📍 Estepona

REF# R5152909 420.000 €

BEDS

2

BATHS

2

BUILT

99 m²

PLOT

13 m²

TERRACE

28 m²

Luxurious Golfside Apartment in Benatalaya, Benahavís / Estepona

Luxuriate in this exquisite two-bedroom apartment nestled within the prestigious Benatalaya urbanization, perfectly situated on the first line of the Atalaya Golf Club. This prime location offers a rare blend of peaceful exclusivity and modern convenience, surrounded by lush greenery, rolling fairways, and breathtaking panoramic views that capture the essence of the Costa del Sol lifestyle.

Step into a world where comfort meets sophistication. The apartment, ideally positioned on the first floor, features a spacious and sun-filled layout with elegant finishes and natural tones that create an atmosphere of warmth and serenity. The south-west orientation ensures abundant natural light throughout the day and spectacular sunsets that paint the sky each evening.

Inside, you'll find two beautifully appointed bedrooms and two contemporary bathrooms, including a luxurious en-suite master bathroom. The modern kitchen comes fully equipped and includes a separate laundry room for added practicality. The expansive covered terrace serves as an outdoor sanctuary —

+34 951 123 083 | +44 (0)330 179 8687 | info@idiliqestates.com Local 28, Edificio D, Centro de Negocios Puerta de Banús, N-340, Km 175, 29660 Nueva Andlucia

IDILIQ

ESTATES

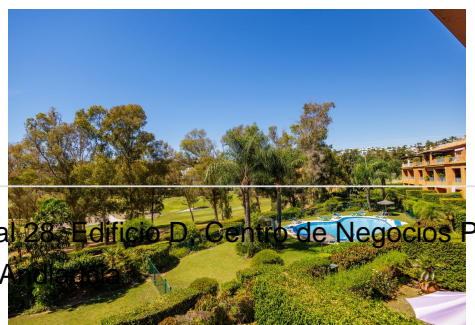
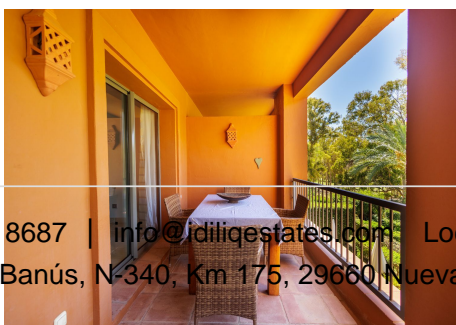
perfect for alfresco dining, entertaining guests, or simply relaxing with a glass of wine while overlooking the immaculate golf course and tropical gardens.

This exclusive gated community offers 24-hour security and an array of resort-style amenities designed to enrich daily living. Enjoy four sparkling communal swimming pools, a state-of-the-art fitness center, and a wellness spa complete with sauna and indoor pool. The meticulously landscaped tropical gardens invite peaceful walks among palm trees, fountains, and quiet seating areas.

Convenience is key: residents benefit from proximity to top-rated international schools, prestigious golf courses, and the Mercadona shopping center, located just minutes away for all daily essentials. The glamorous destinations of Marbella, Puerto Banús, and Estepona are only a short drive, offering fine dining, luxury boutiques, and a vibrant social scene — all while allowing you to retreat each day to the calm of Benatalaya's natural surroundings.

With two underground parking spaces and a private storage room, this apartment offers not just style, but exceptional functionality.

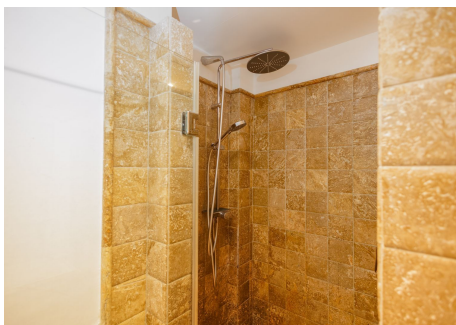
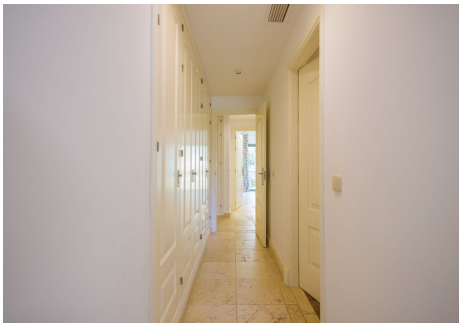
Whether as a permanent residence, holiday home, or investment, this property embodies the best of Andalusian elegance and contemporary comfort — a place where tranquility, luxury, and convenience blend seamlessly into everyday life.



+34 951 123 083 | +44 (0)330 479 8687 | info@idiliqestates.com | Local 28, Edificio D, Centro de Negocios Puerta de Banús, N-340, Km 175, 29660 Nueva Andalucía

IDILIQ

ESTATES



IDILIQ

ESTATES

