



R5143342

📍 Benalmadena

REF# R5143342 3.200.000 €

BEDS

4

BATHS

5

BUILT

718 m²

PLOT

2000 m²

TERRACE

266 m²

The villa is located in a privileged setting, within the exclusive residencial in Benalmádena, the heart of the Costa del Sol. Just 15 minutes from Málaga Airport and 25 minutes from Málaga and Marbella.

Thanks to its location, you can enjoy peace and relaxation in a private environment, while also benefiting from all the services of a modern town, with its beaches only 3 minutes away.

The villa prioritizes large spaces and breathtaking views, designed with a combination of style and practicality, offering warmth through its interior design and luxury with more than 900 m² built.

Plot size: 2000 m²

Orientation: Southeast

Interior built area: 718.28 m²

Exterior built area: 266.94 m²

Total construction: 985.22 m²

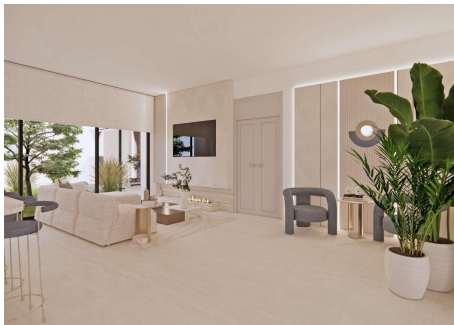
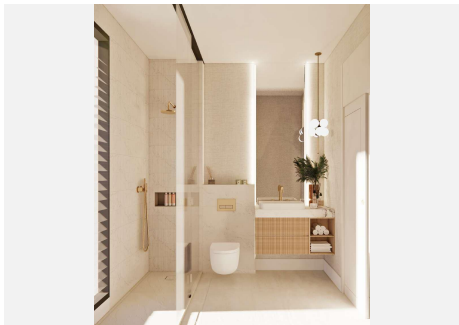
Premium finishes and an optional interior design study by VG Living to complete this villa with the latest layouts and furniture trends.

Layout: Semi-basement, ground floor, and upper floor.

- Spacious living rooms
- 4 bedrooms with en-suite bathrooms
- 2 swimming pools
- Gym, cinema, wine cellar, massage room, changing rooms...
- Covered parking for 3 cars
- Service area for staff

Designed to maximize natural light and connection with the surroundings, the villa offers open-plan living and dining areas, plus over 266 m² of terraces to enjoy with family and friends.

Delivery date: April 2027.



IDILIQ

ESTATES

