



R5143036

📍 La Duquesa

REF# R5143036 410.000 €

BEDS

2

BATHS

2

BUILT

111 m²

TERRACE

110 m²

Discover Paradise: Stunning Penthouse with Panoramic Sea Views and Direct Beach Access

Breathtaking Views and Space: Enjoy 180° panoramic sea views from a massive 110 m² terrace, complemented by mountain vistas, in a bright 111 m² built (100 m² usable) penthouse.

Luxurious Layout: Features 2 bedrooms (master suite with en-suite bathroom and views), 2 bathrooms, spacious hall leading to a grand living room overlooking the sea and pool, furnished kitchen with independent laundry.

Prime Amenities and Convenience: Includes direct sea access, community pool, green areas, garden, air conditioning, elevator, garage spot, fitted wardrobes, and multi-orientation (north, south, east) for optimal light.

Ideal for Tranquil Living: Perfect for those seeking comfort, amplitude, and quality of life, combining seafront serenity with easy access to nature and urban conveniences.

Unique Appeal: A rare ático offering the ultimate in coastal lifestyle, where you can live the sea from home and feel the mountains just steps away—research suggests such properties in areas like Casares Costa are

highly sought after for their blend of luxury and accessibility.

This exquisite penthouse ático is designed for those dreaming of a special home filled with tranquility and unparalleled views. Perched on the 4th floor with elevator access, it boasts expansive, luminous spaces that seamlessly blend indoor comfort with outdoor splendor. The highlight is the impressive 110 m² terrace offering 180° panoramic sea views, ideal for al fresco dining, relaxation, or entertaining while watching the waves. The property includes direct access to the sea, allowing you to step from your haven straight to the beach for swims, walks, or simply soaking in the Mediterranean ambiance.

Inside, the layout is thoughtfully planned: a wide hall welcomes you into a large living room with direct sea and pool vistas, creating an inviting atmosphere. The master bedroom suite features its own complete bathroom and stunning views, while the second bedroom also includes fitted wardrobes for ample storage. A fully furnished kitchen with a separate laundry area adds practicality. Community perks enhance the experience, with a swimming pool, lush green zones, and a garden for leisure. Additional comforts like air conditioning, a included garage space, and adapted exterior access ensure convenience for all.

Located in a desirable coastal setting (likely inspired by vibrant areas like Casares Costa), this penthouse combines modern elegance with natural beauty, making it a perfect retreat for families, couples, or anyone valuing a high-quality seaside lifestyle. Properties like this are known for their southwest orientations that capture unique sunsets, spacious designs, and proximity to beaches, golf courses, and towns.

Why This Penthouse Stands Out

In a market where coastal penthouses are prized for their views and access, this one excels with its direct sea pathway, ensuring effortless beach enjoyment. The multi-directional orientation (north, south, east) floods the space with natural light throughout the day, enhancing the bright, airy feel. Fully equipped and ready for immediate occupancy, it's an investment in both lifestyle and potential appreciation, as similar developments in the region see strong demand from international buyers seeking eco-friendly, luxurious homes.

Location Benefits

Nestled in a serene urbanization, you'll have walking access to the sea while being close to recreational spots. Areas like Casares Costa offer a mix of tranquility and vibrancy, with nearby beaches, parks, and amenities that make daily life effortless and enjoyable. It's an ideal spot for those who appreciate the Costa del Sol's mild climate and scenic beauty without the crowds of busier areas.

Nestled in the heart of Spain's enchanting Costa del Sol, this remarkable penthouse ático epitomizes luxurious coastal living, where breathtaking panoramic views of the sea and mountains converge with direct access to the azure Mediterranean waters. Spanning 111 m² of built area (with 100 m² usable), this top-floor gem on the 4th exterior level is accessible via elevator, ensuring ease for all residents. The property's multi-orientation—north, south, and east—maximizes natural light, creating luminous, welcoming spaces that feel both expansive and intimate. At its core is an impressive 110 m² terrace boasting 180° panoramic sea views, perfect for savoring sunrises over the water or hosting gatherings against a backdrop of endless blue horizons. Adding to its allure is the direct sea access, allowing you to transition seamlessly from your private oasis to the beach for invigorating swims, leisurely strolls along the shore, or simply basking in the gentle sea breeze—a feature that elevates this home to a true waterfront sanctuary.

The interior layout is meticulously designed for comfort and functionality. A spacious hall serves as the gateway to a grand living room, where floor-to-ceiling windows frame direct vistas of the sea and the community pool, blending indoor elegance with outdoor serenity. The two bedrooms are thoughtfully appointed: the principal suite features en-suite bathroom facilities and captivating views, while both include

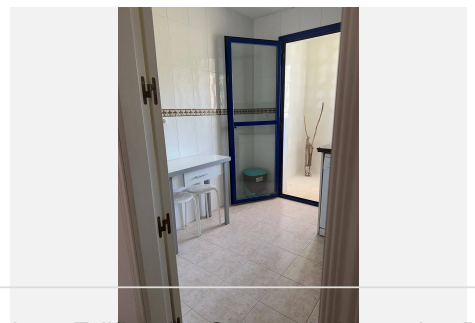
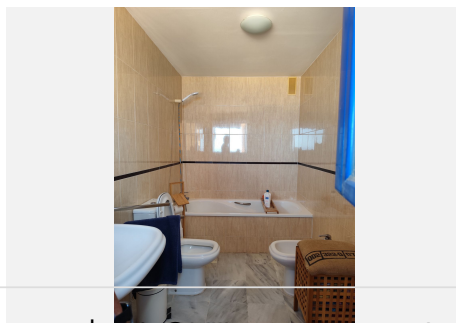
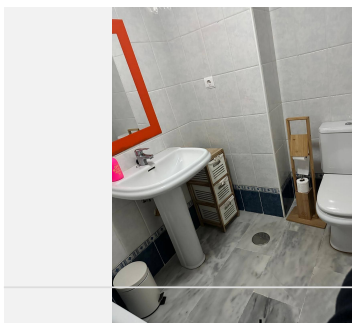
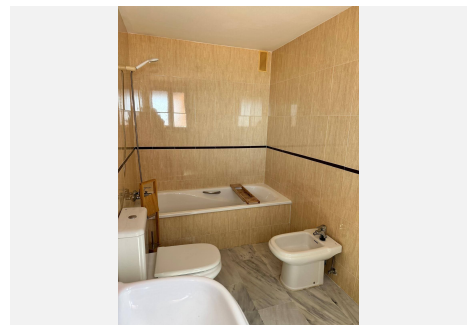
IDILIQ

ESTATES

built-in fitted wardrobes for organized storage. A fully furnished kitchen, complete with modern appliances and an independent laundry area, caters to culinary enthusiasts and everyday practicality. Two well-equipped bathrooms ensure convenience, with high-quality finishes throughout that reflect a commitment to contemporary style and durability.

This ático is part of a well-maintained urbanization that prioritizes resident well-being, offering a refreshing swimming pool for cooling off on warm days, verdant green areas and gardens for relaxation amid nature, and secure parking with a dedicated garage space included in the price. Air conditioning provides year-round climate control, adapting to the region's mild yet varied weather. The development's amenities foster a sense of community while preserving privacy, making it ideal for families, couples, or retirees seeking a balanced lifestyle. In regions like Casares Costa, such properties often include additional perks like proximity to golf courses (e.g., Casares Costa Golf or Finca Cortesin), enhancing recreational options for active residents. The direct sea access not only adds exclusivity but also aligns with the growing demand for beachfront homes that offer immediate connection to the water, as seen in similar listings featuring private paths or waterfront positioning.

What sets this penthouse apart is its unique ability to harmonize the tranquility of mountain proximity with the vibrancy of seaside living. Imagine waking to the sound of waves, stepping out for a morning beach walk via direct access, and returning to your terrace for coffee with uninterrupted 180° views. This setup is particularly appealing in areas like Casares Playa or Bahía de Casares, where developments emphasize natural integration, such as southwest orientations for spectacular sunsets and eco-friendly designs that respect the surrounding landscape. Market insights reveal that penthouses in this region, often with 2-4 bedrooms and built areas around 130-753 m², command premium interest due to their sea views, private terraces, and amenities like pools, gyms, and secure parking—mirroring the high standards here. For instance, comparable duplex penthouses boast incredible terraces and beachside locations, underscoring the investment potential in a market driven by international buyers attracted to the Costa del Sol's blend of affordability, luxury, and natural beauty



IDILIQ

ESTATES

