



MIDDLE FLOOR APARTMENT 3 BEDROOMS 2 BATHROOMS IN ESTEPONA

📍 Estepona

REF# R5142649 490.000 €

BEDS

3

BATHS

2

BUILT

132 m²

TERRACE

12 m²

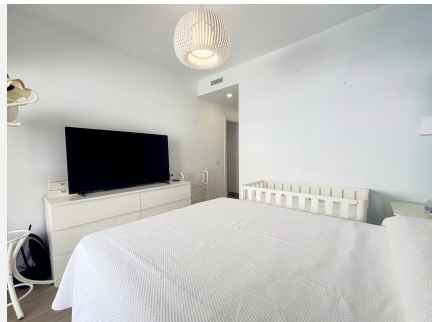
EXCLUSIVE MODERN PROPERTY IN ONE OF ESTEPONA'S MOST SOUGHT-AFTER AREAS, WITH HIGH-QUALITY FINISHES, TWO PARKING SPACES AND A STORAGE ROOM. Prime location in one of Estepona's most desirable and up-and-coming residential areas, surrounded by all essential services: supermarkets, schools, public transport, green spaces, and sports facilities — all just steps away and with excellent access to both the town centre and the motorway. This bright and spacious apartment, built in 2021 with top-quality materials and further upgraded to enhance comfort and functionality, represents a unique opportunity for both living and investment. The home offers an elegant and practical layout, featuring three generous bedrooms with abundant natural light, two stylish bathrooms fitted with premium finishes, and a fully renovated and expanded kitchen, complete with top-brand appliances and custom-made cabinetry — ideal for those who appreciate both design and practicality. The spacious living-dining area opens onto a beautiful terrace with open views of the mountains and the communal areas, fully enclosed with glass curtains, making it perfect for year-round enjoyment. The property also includes two large parking spaces and a fully renovated storage room, adding significant value in terms of convenience and extra

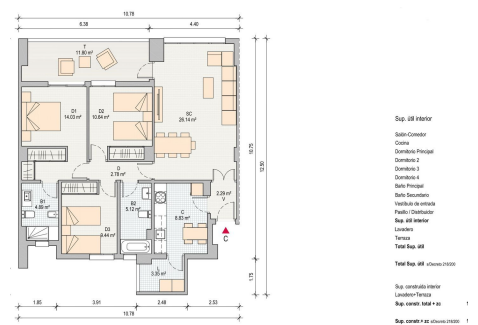
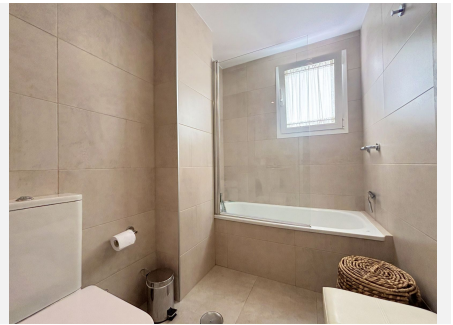
+34 951 123 083 | +44 (0)330 179 8687 | info@idiliqestates.com Local 28, Edificio D, Centro de Negocios Puerta de Banús, N-340, Km 175, 29660 Nueva Andlucia

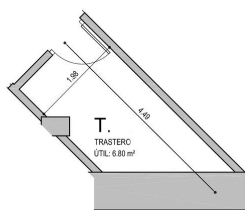
IDILIQ

ESTATES

space. Located in a secure, well-maintained gated community with a swimming pool, children's play area, and very affordable community fees, this property is ideal for families, retirees, or investors seeking quality, comfort, and location. A modern home that blends lifestyle, design, and strategic location — ready to move in and fall in love with at first sight.







Cuadro de superficies del aparcamiento
Número: 11

| | |
|-------------------------------------|----------|
| Superficie útil aparcamiento: | 12.04 m² |
| Superficie construida aparcamiento: | 14.31 m² |
| p.p zonas comunes: | 21.95 m² |
| Superficie construida total: | 36.20 m² |

