



R5139934

📍 Elviria

REF# R5139934 2.900.000 €

BEDS

4

BATHS

3

BUILT

450 m²

PLOT

4444 m²

BRAND NEW VILLA TO THE MARKET IN EAST MARBELLA. VERY PRIVATE ONE LEVEL VILLA ON ONE OF THE BEST STREETS IN ELVIRIA. THIS VILLA HAS STUNNING PANORAMIC VIEWS AND IS JUST A FEW MINUTES FROM THE SEA. IT IS IDEALLY LOCATED WITH QUICK ACCESS DOWN TO THE RESTAURANTS AND THE SHOPPING AREA AND ALL THE AMENITIES OF ELVIRIA AND SURROUNDINGS.

WE START WITH A COZY ENTRANCE HALL WITH IRON DOORS. THIS VILLA HAS A TOTAL OF 4 WELL DISTRIBUTED BEDROOMS AND 3 BATHROOMS, AN OPEN LIVING AREA WITH FIREPLACE CONNECTED WITH THE DINING ROOM, A VERY SPACIOUS KITCHEN WITH SERVICE ENTRANCE AND A FASTASTIC COVERED TERRACE WITH ARCHES AND THE PRIVATE POOL OF 6X12 METRES. DISCOVER THIS CAPTIVATING SOUTH WEST FACING VILLA BOASTING PANORAMIC VIEWS OF THE MEDITERRANEAN SEA.

THE VILLA HAS A SINGULAR ARCHITECTURE WITH VERY THICK WALLS AND WOODEN DECORATIVE ELEMENTS.

FEATURES: JACUZZI BATH AND SAUNA IN THE MAIN BATHROOM, IRRIGATION SYSTEM, ALARM SYSTEM. THERE IS A GARAGE FOR ONE CAR, A COVERED PARKING FOR TWO CARS AND A

IDILIQ

ESTATES

GARDENING STORAGE ROOM.

ELVIRIA IS A VERY POPULAR RESIDENTIAL COMMUNITY LOCATED IN THE EASTERN PART OF MARBELLA, ABOUT 10 MINUTE DRIVE TO MARBELLA CITY AND 25 MINUTE DRIVE TO THE INTERNATIONAL AIRPORT. SOME OF THE BEST SCHOOLS ARE SITUATED IN ELVIRIA SUCH AS THE ENGLISH INTERNATIONAL COLLEGE, THE GERMAN DEUTSCHE SCHULE AND COLEGIO ECOS. ALSO CONVENIENTLY LOCATED ARE THE SANTA MARIA AND SANTA CLARA GOLF COURSES WITH THEIR RESPECTIVE CLUBS AND TWO MORE COURSES GOLF CLUB MARBELLA AND GOLF RIO REAL ARE ONLY A SHORT DRIVE AWAY. AND JUST ACROSS THE STREET THE NINE-HOLE GREENLIFE GOLF COURSE WITH GYM AND A MICHELIN STAR RESTAURANT.

ELVIRIA OFFERS BEAUTIFUL SANDY BEACHES WITH CHARMING RESTAURANTS AND THE MOST FAMOUS BEACH CLUB NIKKI BEACH, THE RAFA NADAL INTERNATIONAL ACADEMY AND 4 AND 5 STAR HOTELS.



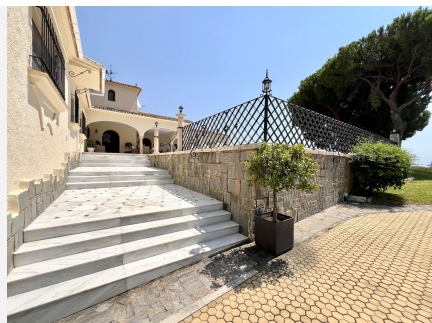
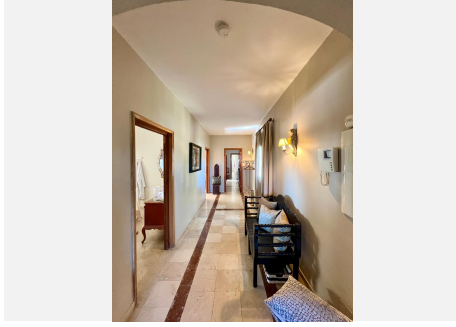
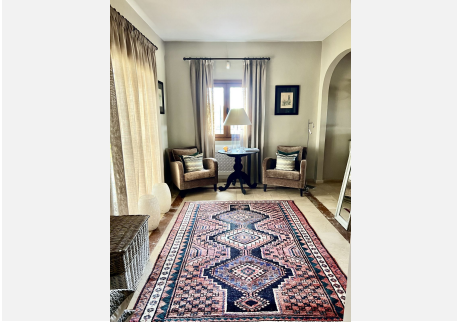
IDILIQ

ESTATES



IDILIQ

ESTATES



IDILIQ

ESTATES

