



R5136754

📍 Marbella

REF# R5136754 405.000 €

BEDS

2

BATHS

2

BUILT

70 m<sup>2</sup>

TERRACE

4 m<sup>2</sup>

Welcome to your new home, located in Nueva Andalucía, just minutes from Puerto Banús and San Pedro Alcántara.

Discover phase XIV of our new housing development project in Nueva Andalucía, Marbella, a neighborhood in full expansion that continues to incorporate businesses and services into the area.

A magnificent building with a modern design and avant-garde architectural details, such as its peak-shaped corner, with high-quality finishes that guarantee total satisfaction and maximum comfort for residents.

The building continues the line of the previous development, perfectly integrating into the visual landscape of the area.

Excellent location with panoramic views of the coast

The building is just 5 minutes from the beach and several golf courses, also enjoying excellent panoramic views of the coast and all the comforts of a luxury home, while maintaining an affordable price.

+34 951 123 083 | +44 (0)330 179 8687 | [info@idiliqestates.com](mailto:info@idiliqestates.com) Local 28, Edificio D, Centro de Negocios Puerta de Banús, N-340, Km 175, 29660 Nueva Andalucía

# IDILIQ

ESTATES

Homes from 90 to 150 m<sup>2</sup>  
With top-quality finishes and modern design.

All the homes are connected by pleasant garden areas and enjoy top-quality finishes and modern design, including a spacious private terrace and a parking space in the building itself.

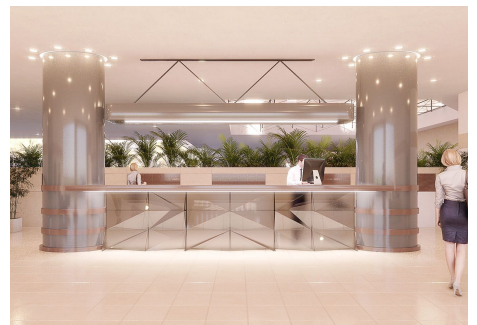
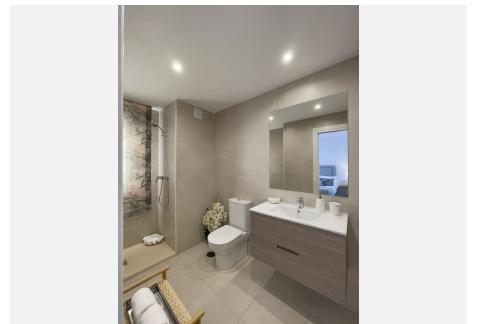
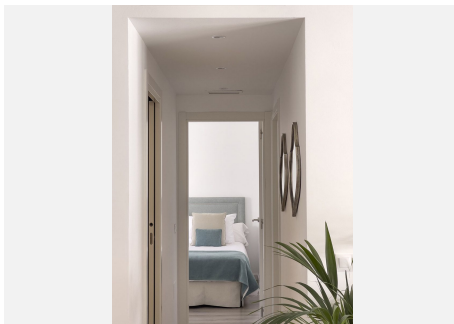
In addition, our project offers a gym, chillout area, and a spectacular rooftop pool with unbeatable views of the sea and the mountains.

The ideal place to enjoy a good swim and relax with the views.

Apartments for sale in this development in Nueva Andalucía, Marbella, with the best value for money in the area.

In Nueva Andalucía, Marbella, a strategic area just 5 minutes by car from San Pedro Alcántara and Puerto Banús.

The home of your dreams for you and your family is in a newly created and expanding neighborhood, surrounded by all the services you may need: schools, institutes, sports areas, parks, shops... all within walking distance.



+34 951 123 083 | +34 (0)330 179 8687 | [info@idiliqestates.com](mailto:info@idiliqestates.com) Local 28, Edificio D, Centro de Negocios Puerta de Banús, N-340, Km 175, 29660 Nueva Andalucía

# IDILIQ

ESTATES

