



R5129107

📍 Benalmadena

REF# R5129107 690.000 €

BEDS

3

BATHS

3

BUILT

148 m²

TERRACE

46 m²

Discover this charming and bright three bedroom duplex penthouse in Benalmádena with spectacular panoramic sea views!

Upstairs has three bedrooms with two bathrooms, one of them en suite, and a spectacular terrace with unobstructed sea views.

On the ground floor we find the living-dining room with access to the ground floor terrace with panoramic sea views, with the island kitchen equipped with the latest appliances, guest toilet. It has two parking spaces and storage room

Premium residential complex with a wide variety of communal services to relax or socialise if desired, including:

- Gymnasium
- Wellness area with sauna
- Residents' social club

+34 951 123 083 | +44 (0)330 179 8687 | info@idiliqstates.com Local 28, Edificio D, Centro de Negocios Puerta de Banús, N-340, Km 175, 29660 Nueva Andlucia

IDILIQ

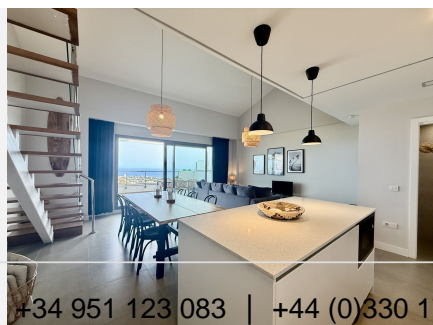
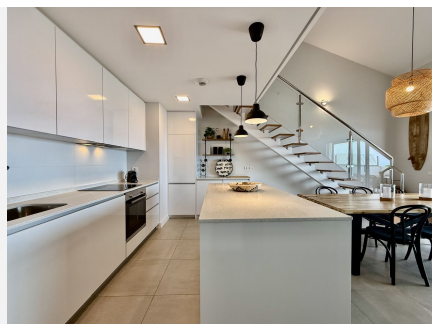
ESTATES

- An exclusive "gastro-themed" function room with fully equipped kitchen.
- Swimming pools

This strategic, unobstructed and tranquil location with essential services within easy reach such as schools, supermarkets, golf courses and hospitals, guaranteeing convenience and a high quality of life.

Easy and quick access to the motorway, 14 km from Malaga airport, 22 km from Malaga city centre, 36 km from Marbella.

Ideal for living, as a second home or investment



+34 951 123 083 | +44 (0)330 179 8687 | info@idiliq-estates.com Local 28, Edificio D, Centro de Negocios Puerta de Banús, N-340, Km 175, 29660 Nueva Andlucia

IDILIQ

ESTATES

