



R5118214

 Sotogrande Marina

REF# R5118214    1.485.000 €

BEDS	BATHS	BUILT	PLOT	TERRACE
3	3.5	155 m <sup>2</sup>	150 m <sup>2</sup>	25 m <sup>2</sup>

### A Refined Mediterranean Escape in the Heart of Sotogrande Marina

Poised gracefully along the waterfront of one of Sotogrande's most peaceful and prestigious enclaves, this elevated ground-floor residence in Ribera del Guramí offers a rare balance of coastal serenity and elegant design — just steps from the sea and the marina's gentle rhythm.

With panoramic views across the Mediterranean and Puerto Deportivo, this home invites you into a world of calm sophistication. A private plunge pool is nestled within an immaculately kept garden of approximately 150?m<sup>2</sup>, while the 30?m<sup>2</sup> covered terrace provides an idyllic setting for al fresco dining or quiet reflection beneath the Andalusian sun.

The interiors are equally serene, beginning with a welcoming entrance hall and guest cloakroom that lead to an open-plan living and dining space. Sunlight pours through the glass doors, which open onto the terrace and garden, framing ever-changing seascapes. There are three spacious bedrooms, each with its own en-suite bathroom, designed for comfort, privacy and a touch of quiet indulgence.

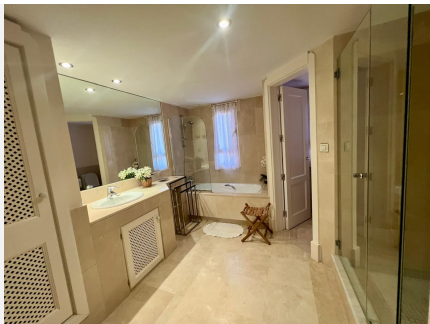
+34 951 123 083 | +44 (0)330 179 8687 | [info@idiliqestates.com](mailto:info@idiliqestates.com)    Local 28, Edificio D, Centro de Negocios Puerta de Banús, N-340, Km 175, 29660 Nueva Andlucia

Attention to detail is present in every corner:

- Underfloor heating and climate-controlled air conditioning
- Marble flooring throughout
- Fitted wardrobes and high-quality finishes
- Alarm system, lift, private underground parking and storage room

Positioned in a highly sought-after area, just a short stroll from the beach, marina, boutique shops and cafés, this is a home that celebrates both location and lifestyle.

And for those who dream of life on the water, a 15-metre private mooring, situated just a few steps from the residence, is available as an exclusive addition — the perfect complement to a life lived beautifully by the sea.



# IDILIQ

ESTATES

