



R5117011

📍 Calahonda

REF# R5117011 310.000 €

BEDS

2

BATHS

2

BUILT

110 m²

TERRACE

28 m²

Bright Apartment with Panoramic Sea Views

This spacious and light-filled apartment is perfectly situated in a peaceful yet central area of Calahonda, surrounded by restaurants and all daily amenities, just a 7-minute drive from the beach.

Offering breathtaking panoramic sea views from the private terrace, this home is located in a well-maintained residence with a beautiful communal pool, private garage and storage. An ideal opportunity for those seeking comfort, space and Mediterranean charm on the Costa del Sol.

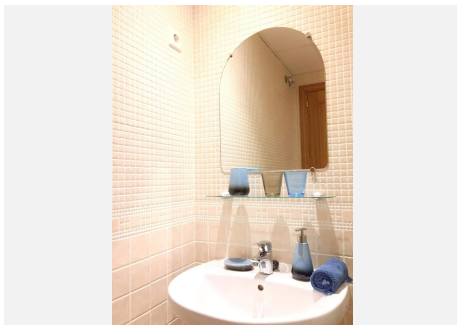
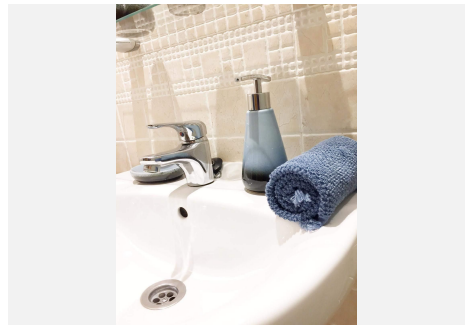
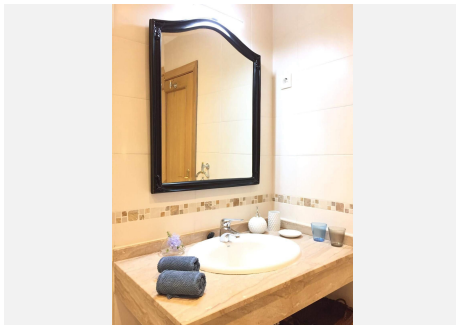
- ? ?2 bedrooms
- ? ?2 bathrooms
- ? ?Bright and spacious interior
- ? ?Large terrace with stunning sea views
- ? ?Private garage and storage room
- ? ?Well-kept communal gardens with pool

+34 951 123 083 | +44 (0)330 179 8687 | info@idiliqestates.com Local 28, Edificio D, Centro de Negocios Puerta de Banús, N-340, Km 175, 29660 Nueva Andlucia

IDILIQ

ESTATES

Live the relaxed Calahonda lifestyle close to everything, yet wonderfully tranquil.



+34 951 123 083 | +44 (0)330 179 8687 | info@idiliqestates.com Local 28, Edificio D Centro de Negocios Puerta de Banús, N-340, Km 175, 29660 Nueva Andalucía, Málaga