



HOUSE 2 BEDROOMS 2 BATHROOMS IN MANILVA

 Manilva

REF# R5110435 349.000 €

BEDS

2

BATHS

2

BUILT

128 m²

PLOT

153 m²

VILLA 1

207.45m² built on a 240m² plot. It has 3 bedrooms, 3 bathrooms, living room, kitchen, terrace, private garden, private garage for 2 vehicles, basement with natural light and excellent sea views.

SEMI-DETACHED HOUSE 2

128.25m² built on a 153m² plot. It has 2 bedrooms, 2 bathrooms, living room, kitchen, terrace, private garden, parking area within the plot, basement with natural light and excellent sea views.

SEMI-DETACHED HOUSE 3

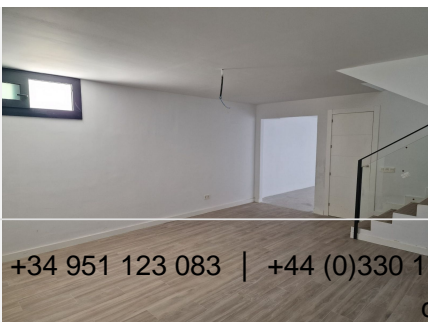
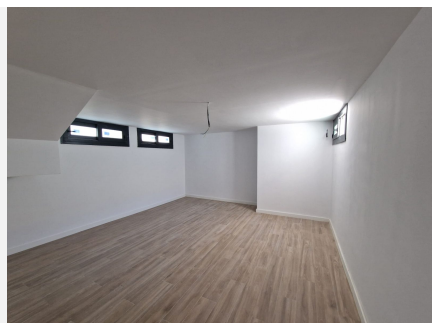
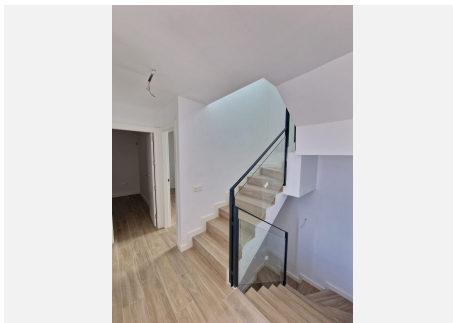
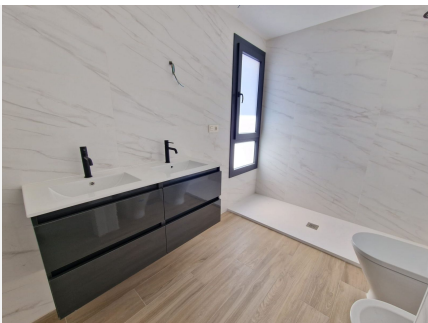
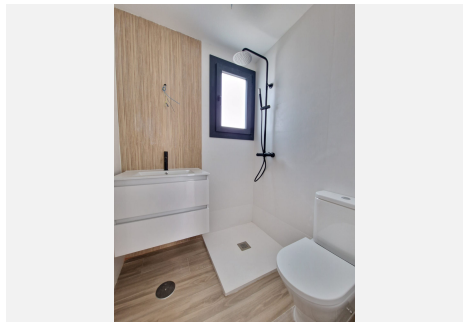
128.25m² built on a 138m² plot. It has 2 bedrooms, 2 bathrooms, living room, kitchen, terrace, private garden, parking area within the plot, basement with natural light and excellent sea views.

SEMI-DETACHED HOUSE 5

128.25m² built on a 156m² plot. It has 2 bedrooms, 2 bathrooms, living room, kitchen, terrace, private garden, parking area within the plot, basement with natural light and excellent sea views.

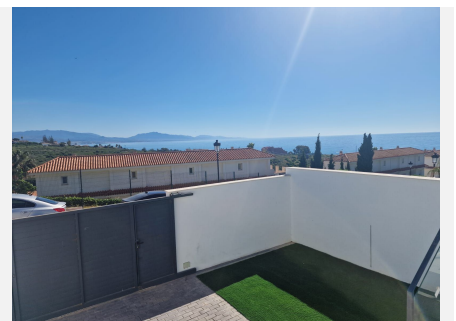
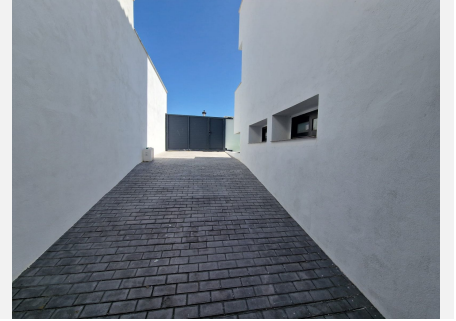
+34 951 123 083 | +44 (0)330 179 8687 | info@idiliqestates.com Local 28, Edificio D, Centro de Negocios Puerta de Banús, N-340, Km 175, 29660 Nueva Andlucia

?views.



IDILIQ

ESTATES



IDILIQ

ESTATES

