



R5107918

📍 Atalaya

REF# R5107918 595.000 €

BEDS

4

BATHS

2.5

BUILT

140 m²

TERRACE

60 m²

## Stylishly Renovated Corner Townhouse with Prime South-Facing Orientation

Welcome to this beautifully refurbished corner townhouse in the sought-after residential community of Monte Biarritz, perfectly situated on the border between Marbella and Estepona. This modernized home enjoys a prime position within the complex—south-facing and overlooking the lush communal gardens and inviting swimming pool area.

Bathed in natural light, the property offers a seamless blend of comfort, style, and functionality across three well-designed levels. The ground floor boasts a spacious and airy living room that flows directly onto the private garden—ideal for relaxing or entertaining outdoors. The sleek, fully renovated kitchen features high-end finishes and modern appliances, complemented by a convenient guest toilet.

Upstairs, you'll find three comfortable bedrooms and two stylish bathrooms. The top floor hosts a versatile fourth bedroom, a handy storage area, and a generous solarium terrace—perfect for sunbathing or enjoying tranquil views of the surrounding greenery.

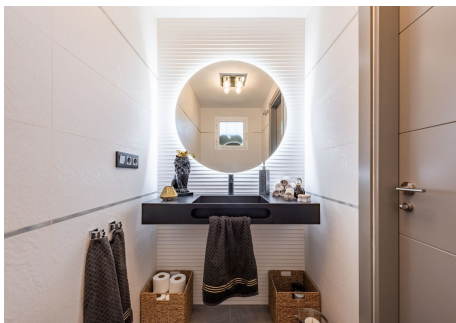
+34 951 123 083 | +44 (0)330 179 8687 | [info@idiliqestates.com](mailto:info@idiliqestates.com) Local 28, Edificio D, Centro de Negocios Puerta de Banús, N-340, Km 175, 29660 Nueva Andlucia



# IDILIQ

## ESTATES

With its fresh contemporary interiors, south-facing aspect, and superb location just under 2 km from the beach, this townhouse is a wonderful opportunity for families, full-time residents, or anyone seeking a modern coastal getaway close to all amenities.





# IDILIQ

## ESTATES

