



R5107315

📍 Marbella

REF# R5107315 1.176.270 €

BEDS

2

BATHS

2

BUILT

112 m²

TERRACE

30 m²

This stunning new development offers an exceptional living experience with a blend of modern design and unbeatable convenience.

Located in a prime area, the property is ideally situated close to a variety of amenities, including world-class golf courses, beautiful beaches, shopping centers, schools, and marinas.

The location offers the perfect balance between tranquil, coastal living and easy access to daily necessities, making it an excellent choice for families, retirees, and golf enthusiasts alike.

The development features new construction with high-quality finishes, offering a fresh, contemporary atmosphere.

The homes are equipped with private pools, both outdoor and indoor, allowing for year-round relaxation.

IDILIQ

ESTATES

Residents can enjoy breathtaking views, whether it's the serene mountain backdrop, lush gardens, the refreshing sight of their private pool, or a peaceful courtyard.

The properties also come with spacious terraces, including covered and private options, where you can unwind and enjoy the surrounding natural beauty.

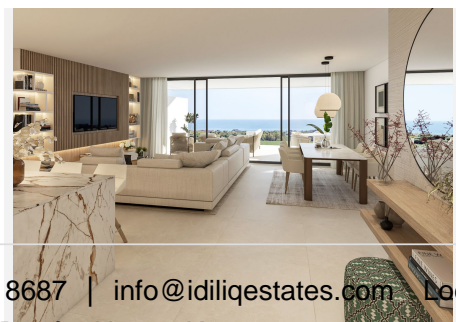
Inside, the homes are equipped with fitted wardrobes for ample storage and fully fitted kitchens, making daily living convenient and enjoyable.

The development also features private gardens, gyms, and ensuite bathrooms for each bedroom, ensuring luxury and privacy at every turn.

This new development is more than just a place to live; it's a lifestyle.

With all the modern features, luxury amenities, and an outstanding location, it represents the perfect opportunity for those seeking a new home in a thriving community.

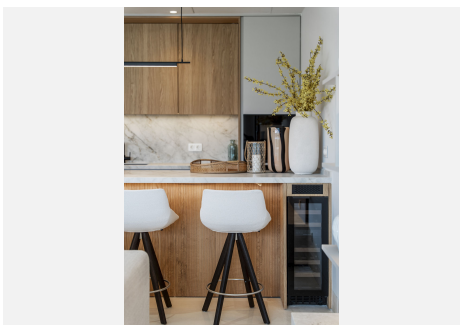
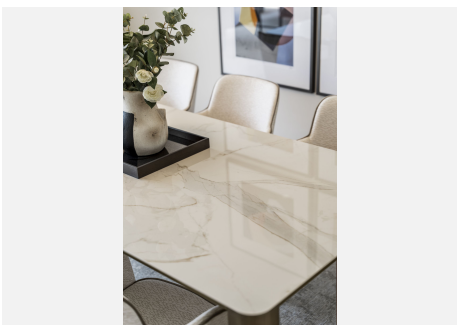
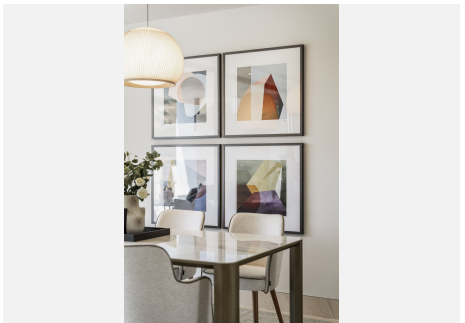
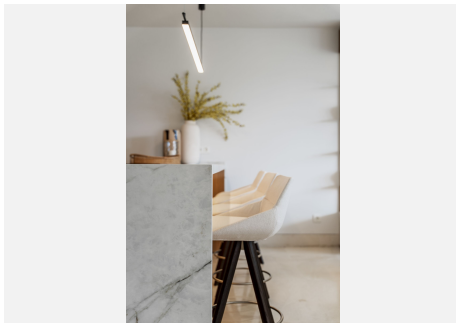
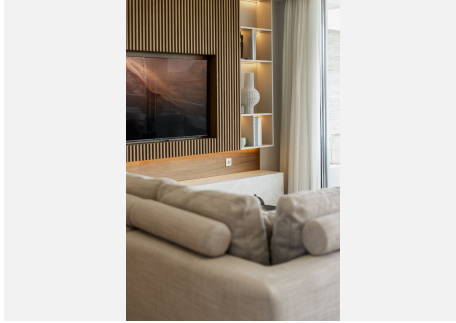
Whether you're looking for a peaceful retreat or a home close to all the action, this development has everything you need to live the life you've always dreamed of.



+34 951 123 083 | +44 (0)330 179 8687 | info@idiliqestates.com - Local 28, Edificio D, Centro de Negocios Puerta de Banús, N-340, Km 175, 29660 Nueva Andalucía

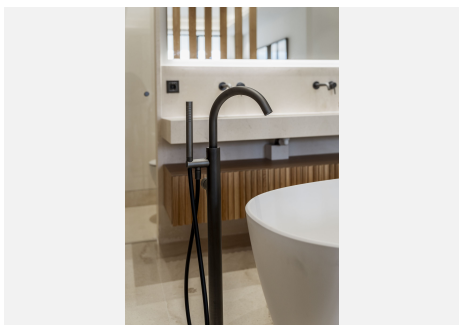
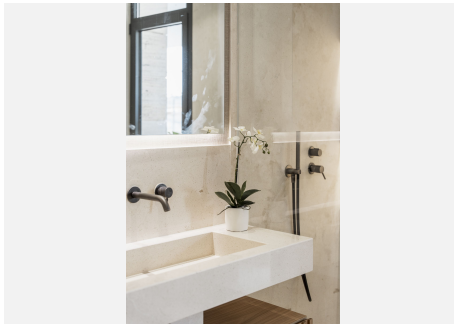
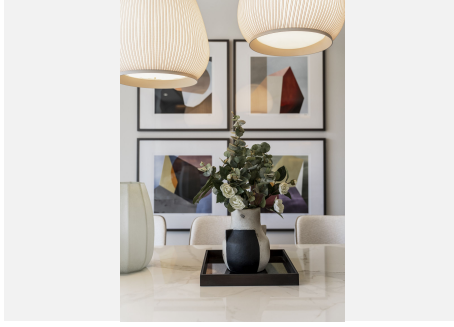
IDILIQ

ESTATES



IDILIQ

ESTATES



IDILIQ

ESTATES

