



R5083162

📍 Mijas

REF# R5083162 610.000 €

BEDS

3

BATHS

1

BUILT

293 m²

PLOT

20800 m²

IT'S NOT JUST A PLOT. IT'S AN OPPORTUNITY YOU'LL NEVER SEE AGAIN.

IN MIJAS WITH PANORAMIC SEA VIEWS AT €32/M2 – 20.000 sq of land with a 293 sq CORTIJO to be reform. Water, electricity and septic tank in place  
NOW 610.000€ FOR QUICK SALE

Looking for the perfect investment? Here they are:

A 20,000m2 estate with endless views and a 293m2 country house to renovate. Unlimited potential in one of the most desirable areas of the Costa del Sol.

Anyone who understands investment knows that land doesn't depreciate in value. That authentic property is scarce. And that the best decisions are made before everyone sees them.

This place isn't for everyone. It's for those who see beyond. For those seeking a future, a lifestyle, a legacy. Discover the potential of this impressive 293 m² farmhouse in need of renovation, nestled on a sprawling 20,000 m² estate with unparalleled panoramic views. Built in 1900, the farmhouse is in a state of disrepair. Following regulations for construction on rural land prior to 1975, CARA certified, renovation is permitted,

and upon completion of reconstruction, the city council issues a LPO.

The farmhouse, for its part, has been designated as an agricultural development, making it an ideal setting for those seeking a natural space with extensive potential.

The farmhouse has 3 bedrooms, 2 bathrooms, and a cozy fireplace, offering endless opportunities to transform it into a unique home or a profitable business. Access is easy via a paved road and a section of compacted earth road, and its location is privileged: just a few minutes' drive from the charming town of Mijas and next to the prestigious Valtocado residential area.

With a south-facing orientation and two floors, this property is perfect for those seeking tranquility while remaining close to amenities. Plus, there are no restrictions on obtaining a vacation rental license, making it a unique investment opportunity.

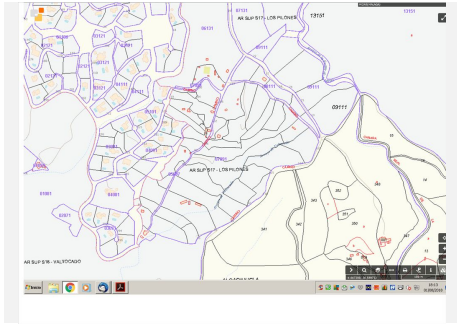
**NATURAL SURROUNDINGS, TOTAL PRIVACY, AND CONVENIENT ACCESS.**





# IDILIQ

ESTATES





# IDILIQ

ESTATES

