



R5078308

📍 La Capellania

REF# R5078308 850.000 €

BEDS

4

BATHS

4

BUILT

195 m²

PLOT

435 m²

TERRACE

15 m²

This is a lovely family villa in Benalmadena, located on a short Cul De Sac in a very quiet and secure residential area with stunning sea and mountain views. The orientation is fabulous and there is off road parking plus a large front walled yard with above ground pool and multiple sitting areas. The property has manicured and easy maintained gardens on three sides and there is also a private solarium accessed via an easy climb straight staircase which offers panoramic sea and mountain views.

The main property is all on one level which comprises of 3 large double bedrooms, 2 bathrooms, a south west facing semi open plan kitchen/living with real fire and off this area a very large covered terrace area with glass curtains around allowing use and comfort all year round.

Below the main property is an independent apartment with a living room, open plan kitchen, bathroom and a double bedroom en-suite.

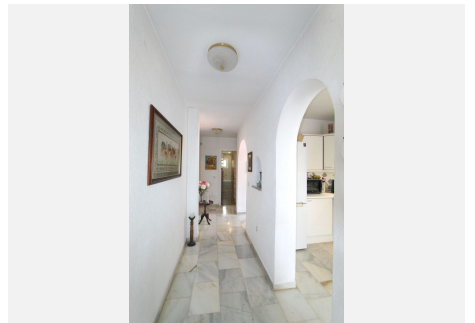
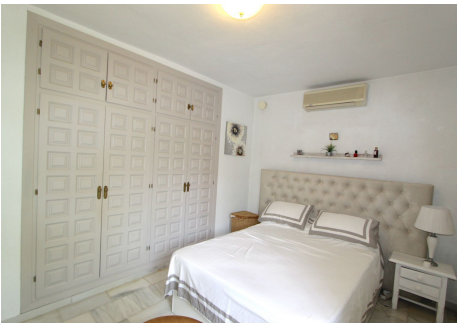
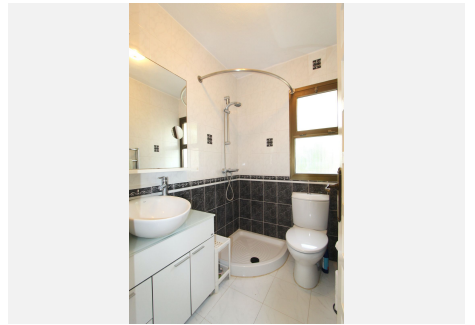
The community is presently refurbishing the communal pool and the cost has already been accounted for.

There are numerous amenities; including supermarket, cafes, restaurants, bars all within a short walk and you are also a 20 mins walk to the beach and only 10 mins drive to Malaga Airport.

This villa really needs to be viewed to appreciate its full potential.

IDILIQ

ESTATES



IDILIQ

ESTATES

