



R5076124

📍 Marbella

REF# R5076124 475.000 €

BEDS

2

BATHS

1

BUILT

103 m²

TERRACE

38 m²

KEY READY!

This development is an exclusive completed residential complex designed with a contemporary and elegant style, created for those seeking comfort, quality, and a sophisticated lifestyle. The project offers 2- and 3-bedroom homes as well as unique penthouses, all with large terraces and open layouts that maximize natural light. The careful selection of high-end materials and finishes guarantees modern, functional spaces with a design that combines aesthetics with practicality.

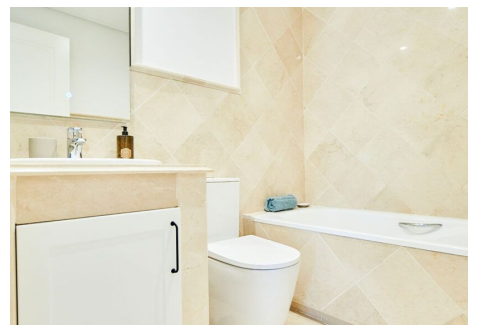
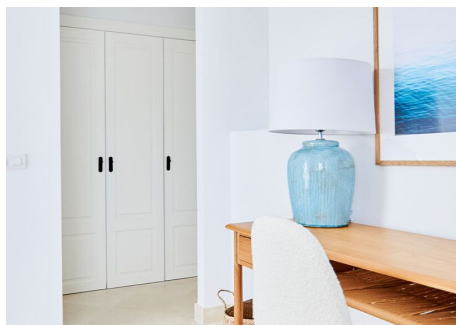
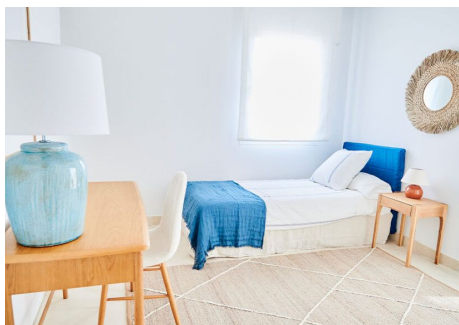
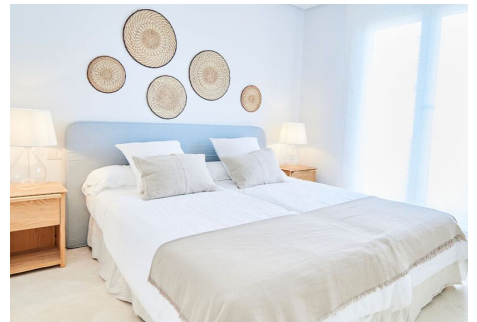
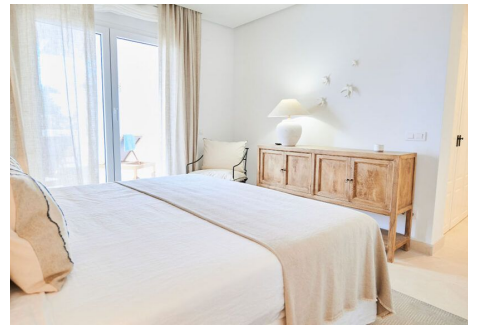
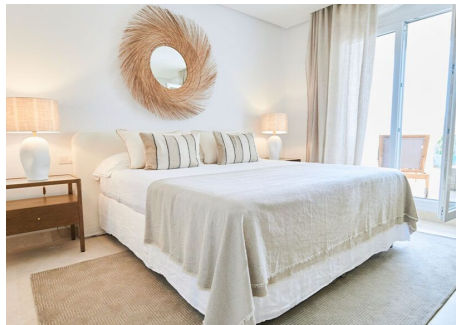
The residential complex stands out for its spectacular common areas, designed for the well-being and socialization of its residents. Among them are extensive tropical gardens, several designer swimming pools, solarium, relaxation areas, and spaces created to enjoy the privileged climate of the Costa del Sol. In addition, the complex offers a fully equipped gym, spa, and wellness area, creating an ideal environment to care for both body and mind without leaving home.

IDILIQ

ESTATES

Located in the heart of prestigious Nueva Andalucía, this development enjoys a strategic location in one of Marbella's most sought-after areas. Its surroundings combine the tranquility of a residential enclave with proximity to top-level golf courses, shopping centers, restaurants, and international schools. Just a few minutes' drive away is Puerto Banús, world-renowned for its exclusivity, leisure offer, and vibrant social life.

Residents of this project benefit from a complete range of services that enhance the living experience. These include 24-hour private security, underground parking, storage rooms, and maintenance services designed to ensure maximum comfort. All this makes this development an ideal option for those looking to invest in a property that not only offers construction quality but also a premium lifestyle in one of the Mediterranean's most desirable locations.



IDILIQ

ESTATES

