



R5074090

📍 Benalmadena

REF# R5074090    560.000 €

BEDS

3

BATHS

3

BUILT

138 m²

PLOT

20 m²

TERRACE

40 m²

Discover the home of your dreams in one of the most exclusive developments in Benalmádena!

We present this spectacular townhouse, meticulously decorated by professionals, located in the prestigious development on the Torrequebrada Golf Course. With only 10 homes, this community offers privacy and exclusivity. The elevated position of the property provides stunning views of the golf course from the main rooms of the house.

The home is distributed over three levels designed to maximize comfort and style.

On the ground floor, you will find a modern, fully equipped kitchen, a guest toilet, a laundry room, and a spacious living room featuring a fireplace to create a cozy atmosphere. This space extends to a beautiful porch with a private garden, perfect for enjoying outdoor moments.

The second floor houses three bedrooms, including the luxurious master suite with a private bathroom, as well as an additional guest bathroom. Each room is designed to offer comfort and elegance.

On the top floor, you will discover a large solarium ideal for relaxing and enjoying the Mediterranean climate,



# IDILIQ

## ESTATES

along with an attic-storage space providing additional storage.

Completing this magnificent property, there is a private garage with space for two cars and access to common areas that include a lush garden and a refreshing pool.

The latest renovation, carried out in 2018, has updated the home with luxury extras such as air conditioning, electric security shutters, pre-installation for solar panels, and an electric awning, as well as a completely new kitchen.

Don't miss the opportunity to live in this oasis of tranquility and luxury.  
Contact us for more details and to arrange a visit. Your new home awaits!

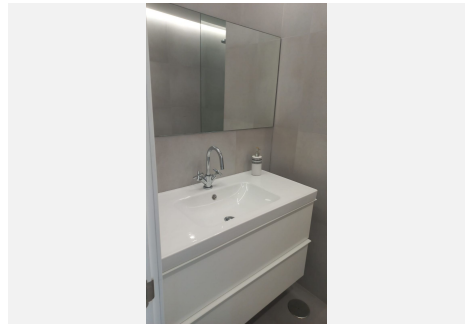
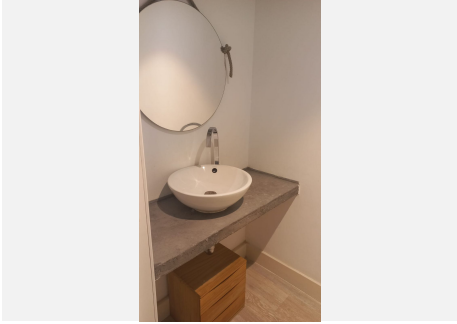


+34 951 123 083 | +44 (0)330 179 8687 | [info@idiliqestates.com](mailto:info@idiliqestates.com) Local 28, Edificio D, Centro de Negocios Puerta de Banús, N-340, Km 175, 29660 Nueva Andalucía



# IDILIQ

ESTATES





# IDILIQ

ESTATES

