



R5073952

📍 Estepona

REF# R5073952 699.000 €

BEDS

3

BATHS

3.5

BUILT

153 m²

TERRACE

100 m²

Stunning Duplex Penthouse with Panoramic Sea Views in Marina Bay, Estepona

This exceptional duplex penthouse is located in the sought-after frontline beach urbanisation of Marina Bay, perfectly positioned by the vibrant Port and Marina of Estepona. Enjoy a privileged coastal lifestyle with all amenities, restaurants, and shops right on your doorstep, and direct access to the golden sands of Cristo Beach—widely regarded as the most family-friendly beach in Estepona, with calm waters and two charming local chiringuitos.

Spanning two floors and boasting two independent entrances—one on the 5th floor and another on the 6th—this spacious property is crowned by a magnificent 92m² solarium terrace, partially covered and ideal for year-round outdoor living.

The upper level features a bright and modern open-plan living and dining area with two full-height glass sliding doors that seamlessly connect the interior to the outdoor spaces. From the covered al fresco dining and BBQ area to the expansive open terrace, you'll enjoy breathtaking panoramic views stretching across

+34 951 123 083 | +44 (0)330 179 8687 | info@idiliqestates.com Local 28, Edificio D, Centro de Negocios Puerta de Banús, N-340, Km 175, 29660 Nueva Andlucia

IDILIQ

ESTATES

Cristo Beach, the Mediterranean Sea, the Spanish coastline, Gibraltar, and even the Moroccan mountains on a clear day. The contemporary kitchen, with a west-facing window, is both stylish and functional, and there's also a convenient guest toilet on this level. The main bedroom suite is located here as well, complete with a walk-in wardrobe, an elegant en-suite bathroom with underfloor heating, and a window that brings in natural light and sea air.

The lower level comprises a welcoming entrance hall, a guest bathroom with shower, and two generously sized bedrooms. One is a guest suite with its own walk-in wardrobe, en-suite bathroom, and a lovely private terrace with south and west-facing views. The third bedroom features a large built-in wardrobe and a north-facing window, ideal for cooler ambient temperatures.

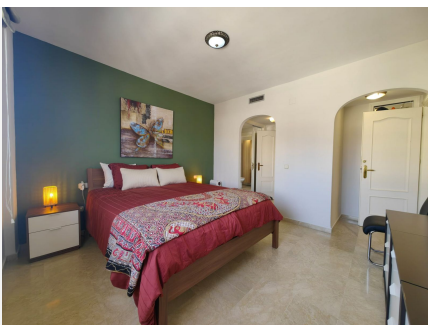
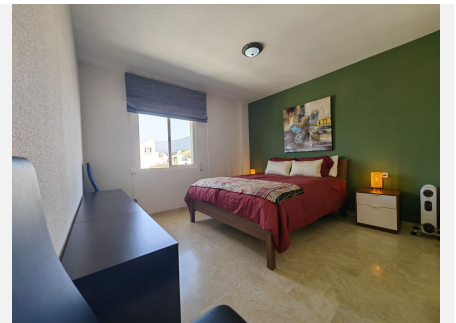
Additional features include underfloor heating in the master bathroom, a private underground parking space, and full access to the exclusive facilities of the Marina Bay community.

Whether you're looking for a luxury home by the sea or a top-tier investment in one of Estepona's most desirable areas, this penthouse ticks every box. With its unbeatable location, sweeping views, and spacious layout, it offers an unparalleled lifestyle opportunity on the Costa del Sol.



IDILIQ

ESTATES



IDILIQ

ESTATES



IDILIQ

ESTATES

