

# IDILIQ

## ESTATES



R5064844

📍 Estepona

REF# R5064844    2.150.000 €

BEDS

5

BATHS

3

BUILT

465 m²

TERRACE

157 m²

This is a dream semidetached beach-side home at the Island Estepona, with stunning sea views, beautiful interiors and evocative details. Offering blue horizons, exclusive living front- line beach with wooden boardwalk to delightful hotels, beaches, stores and the romantic port & town of Estepona. This property within the private 24 hrs secure urbanization, known as "The Island", was chosen for the front page of the original brochure as the views of the wide blue band of the Mediterranean are simply breathtaking in sunlit warm golden daytime & all the way down over the amazing romantic night-lit designer pools flowing through the pearlescent last hours of day. Watch the tide and feel the cool sea air heighten your well-being.

This property speaks for itself.

This open-plan home on diverse levels with a bedroom suite on the garden level (very practical for people with disability or older generation) was completed in 2019 and to a very high standard in all aspects & engages all the senses. A great use of glass throughout, such as overhang glass gangways on a double to triple height on the main 3/4 bedrooms level which can be seen from the living-dining- kitchen area below. Leading up to the relaxing open air south sea facing 100m2 roof-top, the ideal entertaining area with summer kitchen & Jacuzzi. Not forgetting the lavender blue view of foothills back-drop from terraces offering a bucolic arty inspiration. On the main level the stunning modern kitchen with wine fridges, and more is

+34 951 123 083 | +34 (0)330 179 8687 | [info@idiliqestates.com](mailto:info@idiliqestates.com) Local 28, Edificio D, Centro de Negocios Puerta

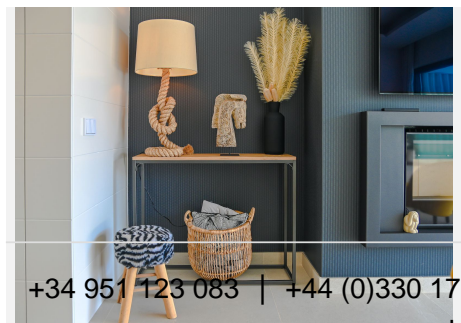
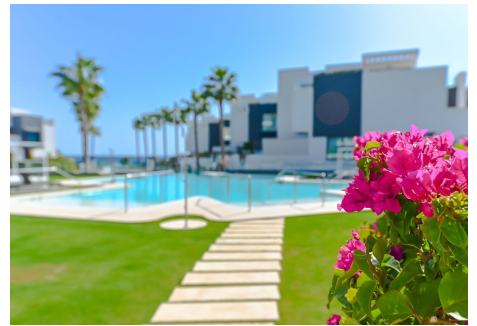
de Banús, N-340, Km 175, 29660 Nueva Andlucia



# IDILIQ

## ESTATES

open-plan to the whole dining-room, delightful spacious living area with encased fireplace leading out to the part covered part open terrace with gate directly to resort style pools. Take a walk around to the gym, heated pool area and of course straight down to the beach. What to say here is all that is needed for happy comfortable living. Contemporary modern inspiration by well known architects and builders, a great tasteful interior decor plus the owners have enhanced creating more with conversion within the master suite & lovely made to measure wooden walk-in closet adding comfort & pleasure to ones modern day lifestyle. Ideal for young couples desiring to lapse in luxury working from home or perfect family layout & even for a person who may wish to live all on one level and never engage in one single step. Large private double garage and separate laundry below.





# IDILIQ

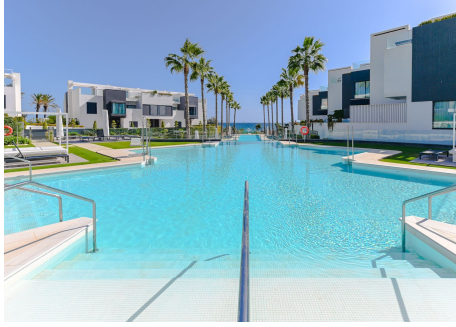
ESTATES





# IDILIQ

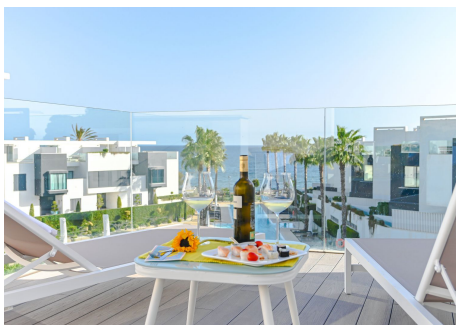
ESTATES





# IDILIQ

ESTATES





# IDILIQ

ESTATES

