



R5061856

 Guadalmina Alta

REF# R5061856 1.695.000 €

BEDS

7

BATHS

6

BUILT

541 m²

PLOT

820 m²

Impressive four-wind villa located in Guadalmina, recognized as one of the finest urbanizations in Marbella. Constructed in 2002, the residence sits on a flat plot measuring six hundred and fifteen square meters. The basement features parking for multiple vehicles, a laundry area, and a double bedroom with an attached bathroom, making it perfect for staff accommodation. On the main floor, a spacious hall leads to a daily dining room that connects to a large kitchen-office, which in turn opens to the main dining area that adjoins a generous 45-meter living room complete with a fireplace, thus creating a living space with two distinct environments. Adjacent to the living room is a versatile room that can serve as a living area, office, or even a bedroom, along with a full bathroom for guest use. Additionally, there is a double bedroom with an en-suite bathroom; this thoughtful layout allows for ground floor living without the need for stairs. From the distributor, we ascend to the bedroom level, which comprises two double bedrooms with en-suite bathrooms, the master suite featuring a dressing room and a private bathroom divided into several sections, and a fourth double bedroom. Several of the bedrooms provide access to expansive terraces. All areas are generously sized, and natural light fills every room, creating a warm and inviting atmosphere. The exterior is particularly impressive, boasting a large covered porch perfect for enjoying delightful moments with family and friends, as well as a swimming pool and a garden area with a chill-out zone for endless evenings.

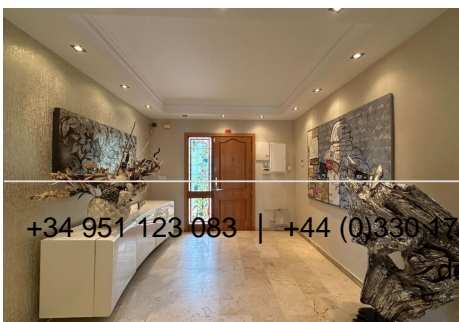
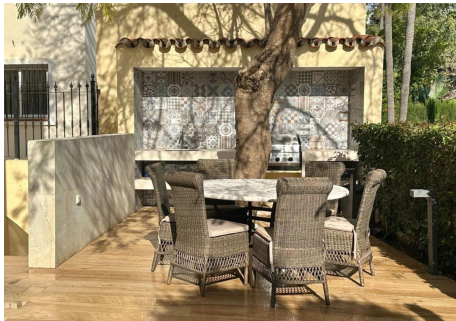
+34 951 123 083 | +34 (0)330 179 8687 | info@idiliqestates.com Local 28, Edificio D, Centro de Negocios Puerta

de Banús, N-340, Km 175, 29660 Nueva Andlucia

IDILIQ

ESTATES

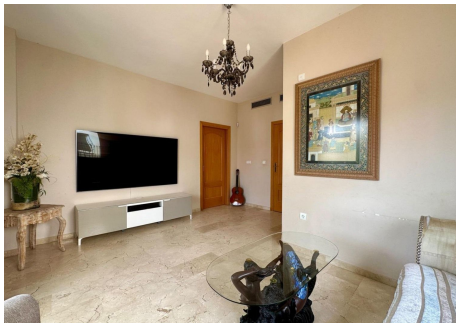
complemented by a covered barbecue area. By personalizing this residence, you will undoubtedly transform it into your dream home.



+34 951 123 083 | +44 (0) 330 479 8687 | info@idiliqestates.com Local 28, Edificio D, Centro de Negocios Puerta de Banús, N-340, Km 175, 29660 Nueva Andalucía

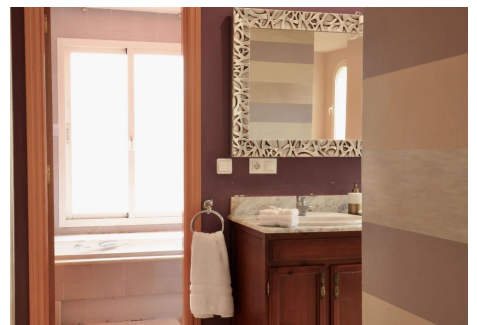
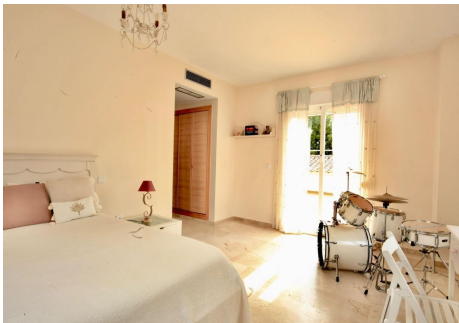
IDILIQ

ESTATES



IDILIQ

ESTATES



IDILIQ

ESTATES

