

IDILIQ

ESTATES



R5051437

📍 Manilva

REF# R5051437 2.500.000 €

BEDS

3

BATHS

3

BUILT

191 m²

PLOT

1307 m²

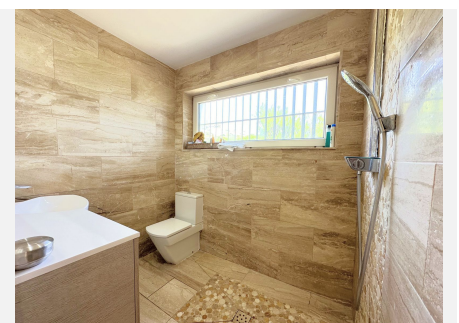
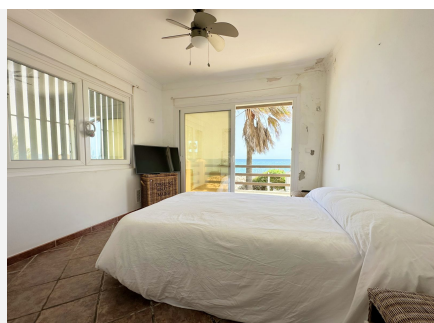
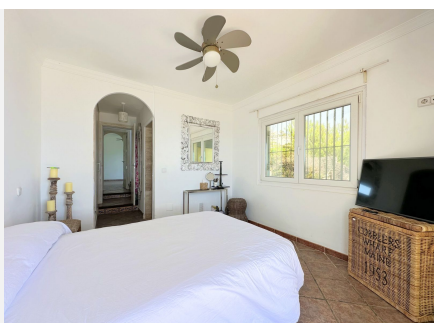
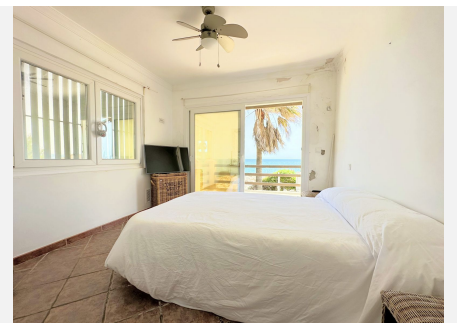
TERRACE

40 m²

EXCLUSIVE BEACHFRONT VILLA Located in the sought-after area of Punta Chullera, this villa is a rare opportunity for those dreaming of a life by the sea. With direct beach access, south-facing orientation, and uninterrupted views of the Mediterranean, this property offers a perfect blend of elegance, privacy, and location literally steps from the sand. Whether you're relaxing in your private garden or cooling off in your exclusive pool, every corner of this home has been designed for total comfort in a natural setting. With three spacious bedrooms and three bathrooms, the villa provides ample space for families or for those seeking a luxurious second residence. Just 10 minutes from Sotogrande and 30 minutes from Gibraltar Airport, the location is ideal for those wanting peace and quiet without sacrificing international connectivity. Nearby, you'll find a charming beach bar, a renowned diving area, a health center, and schools, making it perfect for both holiday living and year-round family life. Built with top-quality materials and in excellent condition, this villa is move-in ready. Air conditioning ensures comfort throughout the seasons. With its prime beachfront position, this is a home that truly embodies comfort, quality, and the beauty of coastal living. A true gem on the Manilva coastline, made for those who appreciate privacy, quality, and the rhythm of the sea.

IDILIQ

ESTATES



IDILIQ

ESTATES



IDILIQ

ESTATES

