



R5051224

📍 San Pedro de Alcántara

REF# R5051224 1.120.000 €

BEDS

4

BATHS

3

BUILT

174 m²

TERRACE

42 m²

Welcome to a newly renovated townhouse located just a few meters from the beaches of San Pedro. The house is surrounded by schools, shops, sports facilities, restaurants, and all essential services. It also enjoys excellent connections to the centre of Marbella and Puerto Banus.

It's a charming townhouse located in the prestigious Sector One of the "Los Ángeles V" residential complex – a peaceful, well-maintained community, walking distance to the beach.

This home perfectly balances comfort, space, and quality of life, making it an ideal residence for families seeking a complete and refined lifestyle on the Costa del Sol. With its good layout and location it's also ideal for renting.

With a total built area of 174 m² of usable space, the property is thoughtfully distributed across three levels, offering bright and generous living areas throughout. The basement includes a cosy games room, a storage space, and direct access from the private underground parking – a practical and secure feature for everyday convenience.

IDILIQ

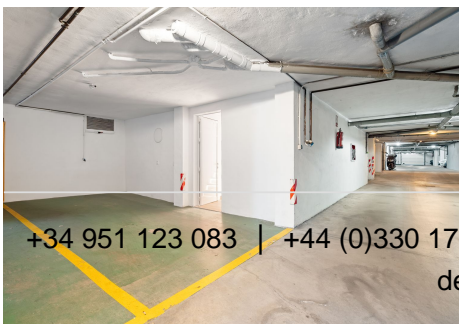
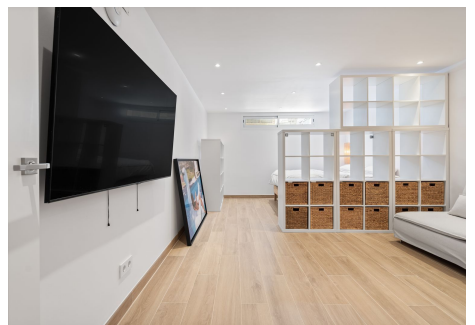
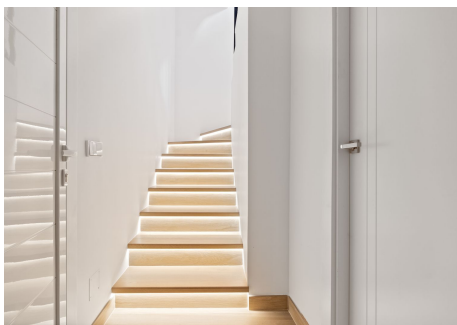
ESTATES

On the main floor, natural light fills the spacious living and dining area, which opens onto a lovely private terrace/garden of 34 m² – a perfect outdoor space to enjoy the Mediterranean climate. The independent new built kitchen has direct access to the living and dining room, a stylish bathroom with shower and laundry.

Upstairs, you'll find three comfortable bedrooms, including a master suite with its own private bathroom and access to a sunlit terrace. A second full bathroom serves the remaining bedrooms.

The property also includes a private underground parking space located conveniently next to the basement entrance, offering secure and direct access to the home.

Welcome to enjoy an amazing house or investment for the money!



+34 951 123 083 | +44 (0)330 179 8687 | info@idiligestates.com | Local 28, Edificio D, Centro de Negocios Puerta de Banús, N-340, Km 175, 29660 Nueva Andalucía