



R5048110

📍 Nueva Andalucía

REF# R5048110 510.000 €

BEDS

3

BATHS

2

BUILT

126 m²

PLOT

1 m²

TERRACE

65 m²

MARBELLA, NUEVA ANDALUCIA, near PUERTO BANUS

Spacious 3-Bedroom Apartment with Oversized Terrace Near Puerto Banús

A rare opportunity to own a unique corner apartment in the sought-after Lorcrimar V residential complex, ideally located just 1.3 km from Puerto Banús and within a 16 minute walk to the beach. Situated on the first floor, this bright and spacious 3-bedroom, 2-bathroom apartment features a huge west-facing terrace, perfect for relaxing or entertaining while enjoying the afternoon sun. The layout includes 3 generous bedrooms, including a master with en-suite bathroom, a fully fitted kitchen, marble floors, and air conditioning (hot and cold) throughout.

Lorcrimar V is a gated community known for its lush tropical gardens and two large swimming pools. A dedicated parking space is included in the price.

Additional highlights:

Minimarket and restaurant conveniently located just across the street

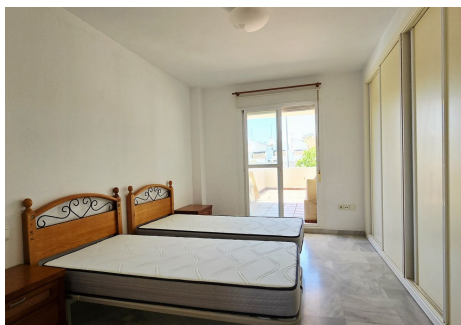
+34 951 123 083 | +44 (0)330 179 8687 | info@idiliqestates.com Local 28, Edificio D, Centro de Negocios Puerta de Banús, N-340, Km 175, 29660 Nueva Andlaucia

IDILIQ

ESTATES

3 top golf courses within a 5-7minute drive
The prestigious Real Club de Padel is just around the corner

Whether you're looking for a holiday home, investment opportunity, or year-round residence, this property offers the perfect combination of location, comfort, and lifestyle.



IDILIQ

ESTATES

