



MIDDLE FLOOR APARTMENT 3 BEDROOMS 2 BATHROOMS IN PUERTO BANÚS

 Puerto Banús

REF# R5047750 1.099.000 €

BEDS

3

BATHS

2

BUILT

110 m²

TERRACE

43 m²

Fantastic apartment, renovated high standard, with high quality materials, ideal for living comfortably, without having to use the car. It is spacious, corner, on a high floor. Very convenient location – next to the sea, in front of Puerto Banus and El Corte Ingles. Sunny. Located in a pedestrian street, quiet, no traffic. Beautiful sea and mountain views.

Designer furnished, with exclusive furniture, has Bang & Olufsen system throughout the house, has closed terrace with Lumon glass curtains, climate control system throughout the house. It is well equipped.

Entrance hall, kitchen open to the living room, the living room has 2 exits to the terrace closed in the form of "L".

It has 2 bedrooms, 2 bathrooms (master en-suite). It has a large separate walk-in dressing room. Many extra details.

It enjoys excellent qualities, has the home automation system.

Apartment has 2 parking spaces in the subway garage.

+34 951 123 083 | +44 (0)330 179 8687 | info@idiliqestates.com Local 28, Edificio D, Centro de Negocios Puerta de Banús, N-340, Km 175, 29660 Nueva Andlucia

Cafes, restaurants, boutiques and stores next door.

A quiet community with large swimming pool overlooking the sea, gym, paddle tennis court.

Security 24 hours.

Miele, Smeg appliances

Bang&Olufsen TV and music system

Electric blinds

Electric awnings, with wind sensors

Enclosed terrace with glass curtains

Super quiet air conditioning, with climate control system throughout the apartment

Walk-in shower in the guest bathroom

Built-in safety box

High quality design furniture, silk carpets

Many exclusive design features and extras

Every bedroom has a smart TV

Washing machine/ dryer

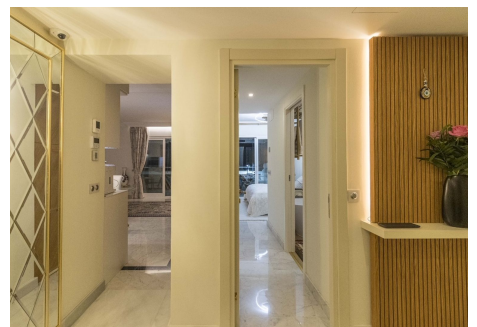
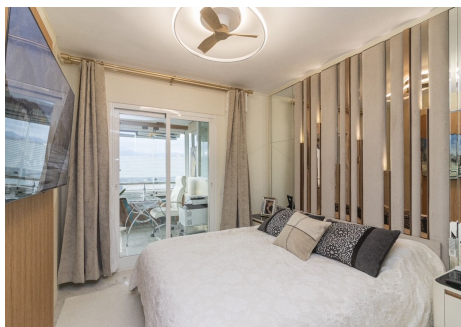
Super fast Fiber Optics Internet

Domotica system

Situated 50 meters from Puerto Banus, El Corte Inglés, Marina Banus, children playground. Next to boutiques, cafés, shops, restaurants. Close to the beach.

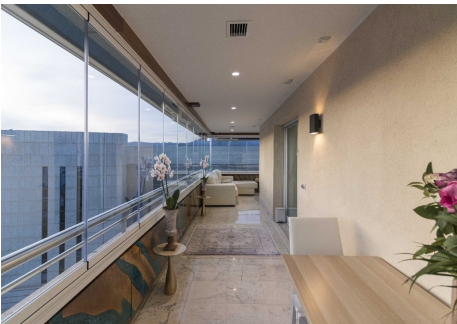
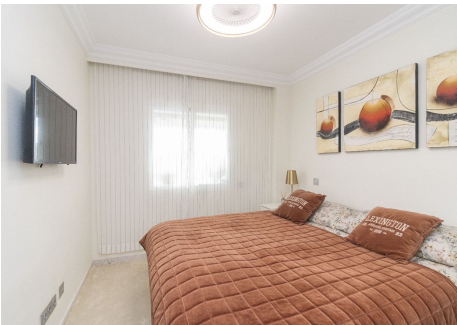
There is a nice big pool with sea views, well equipped gym and a professional paddle tennis court in the complex. 24 hours security.

High demand for rentals throughout the year and vocational, great rentability.



IDILIQ

ESTATES



IDILIQ

ESTATES

