



R5045044

📍 Calahonda

REF# R5045044 690.000 €

BEDS

2

BATHS

2

BUILT

105 m²

TERRACE

150 m²

FANTASTIC, unique, and exceptional, with 180° panoramic views. The Mediterranean architecture blends harmoniously with the materials used. With its east-west orientation, it offers panoramic sea views and stunning views of the ground, and you can see the African coast when the sky is clear.

Enjoy a jacuzzi on a spacious 150 m² terrace with panoramic sea views and beautiful sunbathing on your private terrace.

This incredible 105 m² apartment, with top-quality dimensions and a unique style, consists of a bedroom and a living room with a fireplace, a contemporary kitchen and a modern kitchen island, spacious seating areas with ample closet space, and bathrooms, one of them en suite.

It's worth noting that all rooms in the house have access to the wonderful terrace, where you can enjoy more than 300 days a year of natural light and the Andalusian climate.

You'll enjoy the privilege of spacious green areas and 5 swimming pools, allowing you to relax and enjoy quality time.

IDILIQ

ESTATES

The price includes the parking space and the rear parking lot.
Community fees: €250/month
Property Tax: €600

Live life to the fullest. Decorated in a Mediterranean style with a design that's been carefully designed down to the last detail. Located in Calahonda (Mijas), a tranquil enclave on the Costa del Sol, miles from beaches and with connections to the AP7 and A7 motorways, just 25 minutes from Malaga Airport and the most popular destinations in the province of Malaga: Marbella, Fuengirola, Tarifa, Cádiz, and Doña Ana Park.

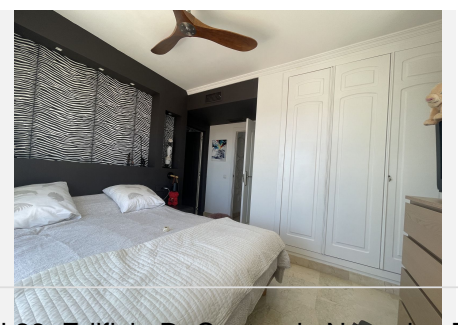
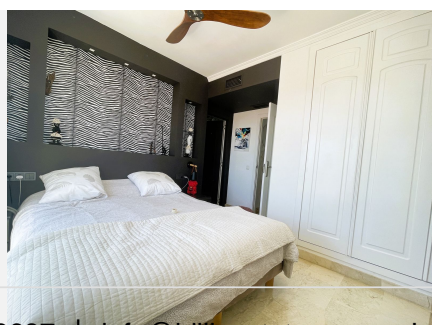
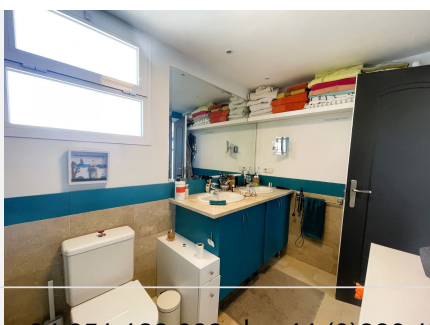
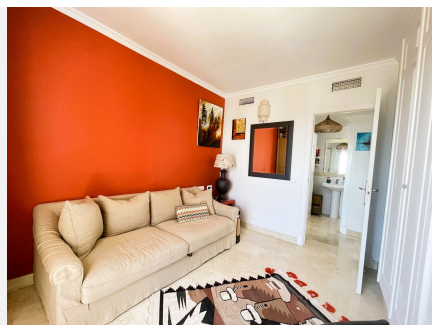
In a quiet neighborhood overlooking the coastal bay, surrounded by single-family homes in a lush natural setting, where the silence is interrupted by the chirping of birds, with incredible landscapes and the most renowned golf courses in the area, such as Cabopino Golf, Calahonda, and Marbella. Perfect as a second home or as an investment.

Enviar comentarios

Paneles laterales

Historial

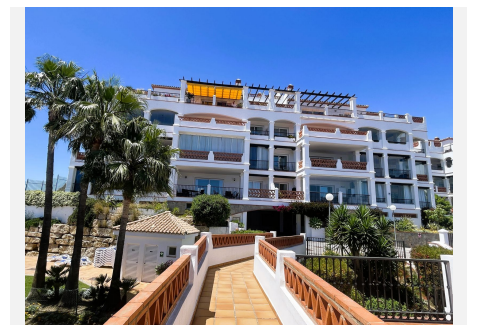
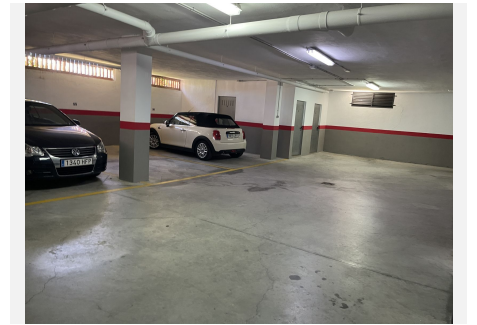
Guardado



+34 951 123 083 | +44 (0)330 179 8687 | info@idiliqestates.com Local 28, Edificio D, Centro de Negocios Puerta de Banús, N-340, Km 175, 29660 Nueva Andlucia

IDILIQ

ESTATES



IDILIQ

ESTATES

