



R5041861

📍 Benalmadena Pueblo

REF# R5041861 499.000 €

BEDS

3

BATHS

2

BUILT

109 m<sup>2</sup>

PLOT

218 m<sup>2</sup>

TERRACE

47 m<sup>2</sup>

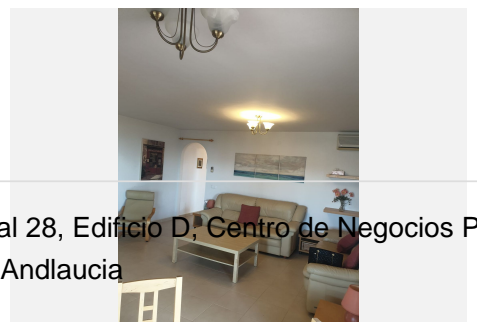
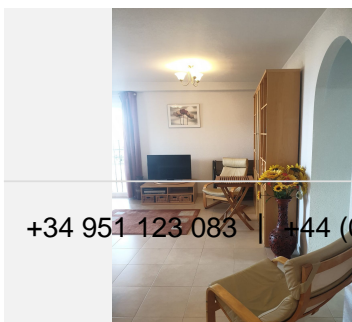
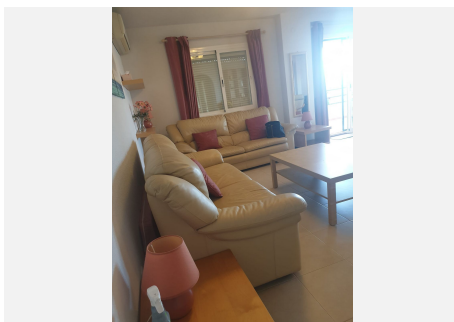
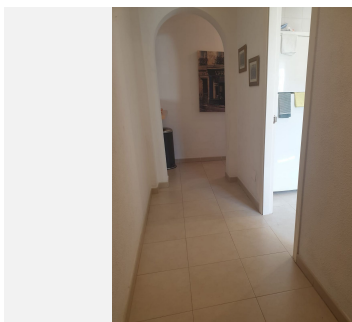
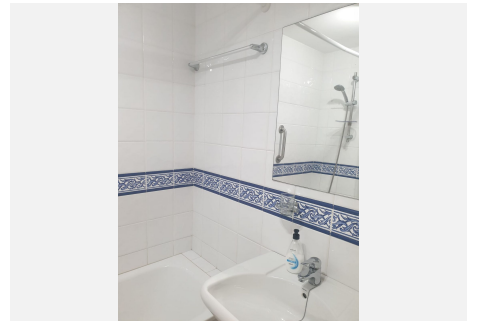
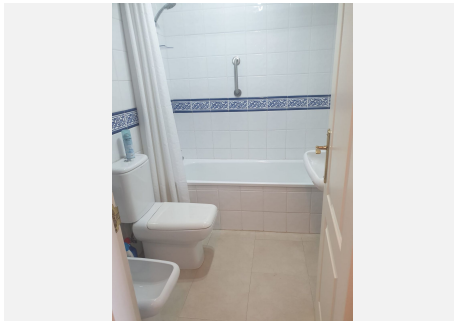
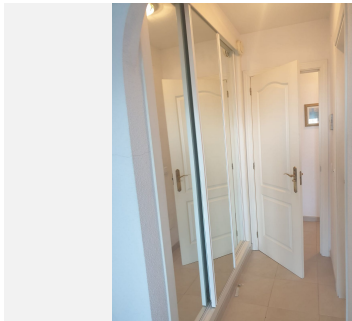
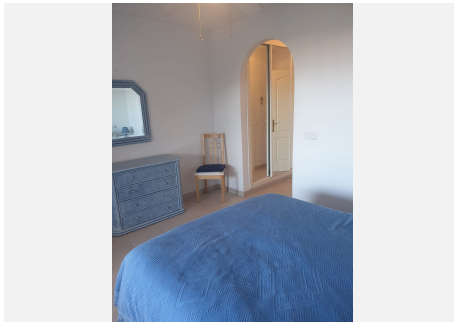
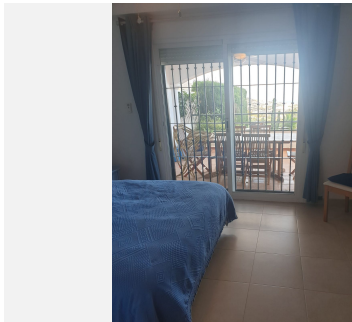
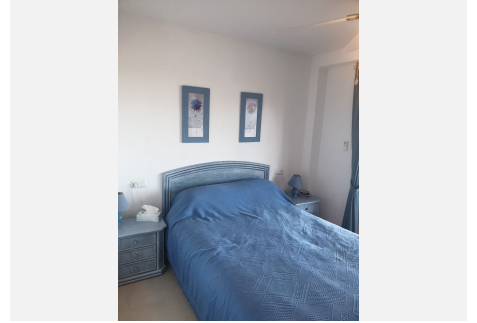
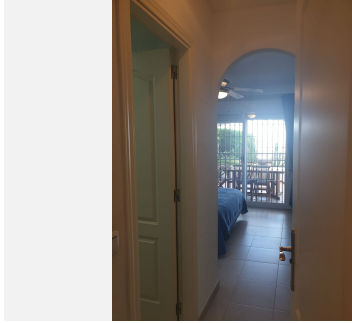
Ground Floor Apartment in Benalmadena Pueblo with Extremely Large Private Garden. This kind of apartment is very rare for the Pueblo. We are proud to present this 3 bed 2 bath ground floor apartment on a sought after urbanisation with a private underground parking space. Built area of 109.5m<sup>2</sup> Terrace 47.1m<sup>2</sup> and private Garden 218m<sup>2</sup>. There are spectacular views of the mountains, sea, village and castle. Walking distance to Benalmadena Pueblo, possible to walk down to the beach in approx 20 mins. On entering you will find a good size separate fitted kitchen with new boiler, dishwasher and washing machine, the hallway leads round to the main bedroom with ensuite bathroom and access to a covered terrace area. Large open plan lounge/ dining room, this leads off to the other 2 double bedrooms. Both have fitted wardrobes and share a bathroom. One of these bedrooms has a small private terrace accessed through patio doors. Leading out from the lounge is a 47.1m<sup>2</sup> terrace with amazing views, where you will find a partly covered private area, perfect for shade and entertaining in summer months. A few steps take you down to the private garden area which has a tiled area perfect for a hot tub but there is also plenty of room to install a private pool. The garden has lots of scope to create the area you have dreamed of. The property is in good condition ready to move in. Priced to sell at 499,000€

We have the keys in the office and viewings are recommended. Properties like this are hard to find, with 3  
 +34 951 123 083 | +44 (0)330 179 8687 | info@idiliqestates.com Local 28, Edificio D, Centro de Negocios Puerta  
 de Banús, N-340, Km 175, 29660 Nueva Andlucia

# IDILIQ

## ESTATES

beds 2 baths, stunning views, parking and a large private garden.  
Contact us now for more information or to arrange a viewing.

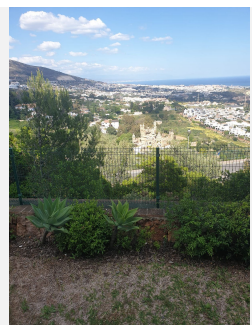
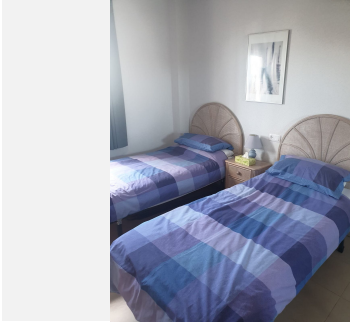


+34 951 123 083 | +44 (0)330 179 8687 | [info@idiliqestates.com](mailto:info@idiliqestates.com) | Local 28, Edificio D, Centro de Negocios Puerta de Banús, N-340, Km 175, 29660 Nueva Andlucia



# IDILIQ

ESTATES



# IDILIQ

ESTATES

