



R5034835

📍 Marbesa

REF# R5034835 545.000 €

BEDS

3

BATHS

2

BUILT

151 m²

TERRACE

22 m²

Built around beautifully manicured gardens which house a magnificent outdoor pool and poolside bar, fill your days with whatever you wish: reading on the upper East facing terrace in the afternoon and gazing at the landscape and sea, or watching the moonrise at night, lazy hours around the swimming pool, sunbathing, strolling along the beach or dining in one of the numerous “chiringuito”, beach bars and listening to the sound of the waves as you fall asleep.

The apartment consists on the lower level:

- a guest bedroom with en-suite bathroom
- living and dining room
- an open-plan fitted kitchen
- entrance terrace (east) and another terrace (west) facing the pool.

– Upper level:

- one bedroom
- a study (bedroom), and shower room

– East-facing terrace with views over the countryside and the sea, and a small west-facing terrace.

+34 951 123 083 | +44 (0)330 179 8687 | info@idiliqstates.com Local 28, Edificio D, Centro de Negocios Puerta de Banús, N-340, Km 175, 29660 Nueva Andlucia



# IDILIQ

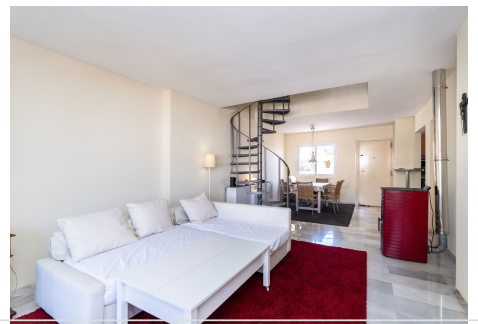
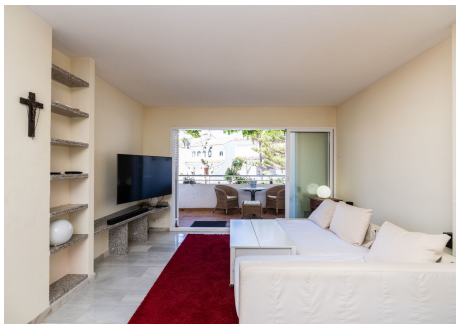
## ESTATES

All terraces have sea views.

The apartment was renovated in 1999. Double-glazed windows were installed in 2014. There is a pellet stove in the living room and air conditioning in the upper bedroom.

The complex: spacious and well-maintained gardens with loungers around the pool and a chiringuito, which is open during the summer months. Large lawn with views of the Mediterranean.

Location: In the east of Marbella, the apartment complex is located directly on the sea. – Distance to Marbella city center: 11 km – Distance to the airport: 32 km





# IDILIQ

ESTATES

