



R5034052

📍 El Chaparral

REF# R5034052 695.000 €

BEDS

3

BATHS

2

BUILT

116 m<sup>2</sup>

PLOT

647 m<sup>2</sup>

Escape to paradise with this exceptional detached villa located in the vibrant coastal town of Mijas Costa, just a 15-minute drive from Málaga Airport. Boasting an enviable location just a short stroll from the sun-drenched beaches and surrounded by a wealth of amenities, this distinctive property offers a unique opportunity to enjoy the benefits of a detached home in a prime setting.

Tucked away from the road, the property enjoys privacy and tranquillity, with a private driveway providing convenient parking for both residents and guests. Designed for comfort and accessibility, the villa is laid out on a single level, with the main entrance conveniently located on the eastern side.

Step into the welcoming open-plan hallway, where the newly renovated interiors immediately offer a sense of space and comfort. The fully equipped kitchen is a chef's delight, offering sea views from the beautifully finished breakfast bar – perfect for entertaining and everyday living.

The open-plan living and dining area is bathed in natural light, enhanced by an electric fireplace for cosy evenings indoors. From here, step out onto the spacious terrace, which boasts magnificent sea views and

+34 951 123 083 | +44 (0)330 179 8687 | [info@idiliqestates.com](mailto:info@idiliqestates.com) Local 28, Edificio D, Centro de Negocios Puerta de Banús, N-340, Km 175, 29660 Nueva Andalucía



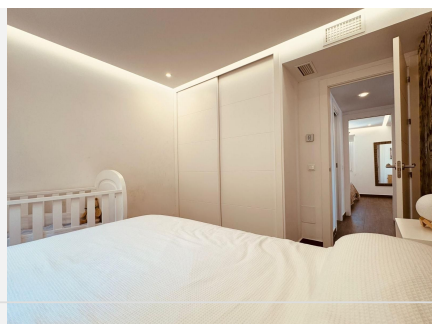
# IDILIQ

## ESTATES

sun throughout the day.

Retreat to three double bedrooms, two of which feature built-in wardrobes providing ample storage space. One bedroom benefits from an en-suite shower room, while a second independent bathroom offers a relaxing bath experience.

The entire property has been refurbished, ensuring modern comfort and style throughout. Centralised hot and cold air conditioning in every room guarantees year-round comfort.



+34 951 123 083 | +44 (0)330 179 8687 | [info@idiliqestates.com](mailto:info@idiliqestates.com) Local 28, Edificio D, Centro de Negocios Puerta de Banús, N-340, Km 175, 29660 Nueva Andlucia



# IDILIQ

ESTATES





# IDILIQ

ESTATES

