



R5027116

📍 Valtocado

REF# R5027116 1.125.000 €

BEDS

5

BATHS

5.5

BUILT

306 m²

PLOT

4310 m²

TERRACE

250 m²

Here, you have the wonderful opportunity to create the Mediterranean dream home you've always envisioned.

Step through a bright, glass-enclosed space that serves as a welcoming introduction to the villa. Inside, a spacious hallway unfolds, offering a choice of entering the inviting living room to your left, the potential-filled kitchen to your right, or ascending to the upper floor.

The living room is a delightful space filled with authentic Andalusian character. A traditional marble fireplace adds a touch of warmth, while wooden beams grace the ceiling. The thoughtful layout provides distinct areas for both relaxing and entertaining, all enjoying the natural light that pours in through three sets of double doors leading to the expansive wraparound terrace. Imagine stepping out and feeling the gentle Mediterranean breeze as you take in the stunning vistas.

The main house comfortably accommodates with four well-proportioned bedrooms. On the ground floor, you'll find two bedrooms sharing a convenient bathroom and separate toilet. Upstairs, two generous

+34 951 123 083 | +44 (0)330 179 8687 | info@idiliqestates.com Local 28, Edificio D, Centro de Negocios Puerta de Banús, N-340, Km 175, 29660 Nueva Andalucía

bedrooms each boast their own ensuite bathroom and a desirable walk-in closet. Both of these peaceful retreats open onto private balconies, perfect for savoring the incredible views. For added convenience, a fifth bedroom on the main floor functions as a separate annex with its own bathroom, ideal for welcoming guests.

The heart of this home presents an exciting canvas awaiting your personal touch – a substantial area ready to become the kitchen of your dreams. Envision designing your dream kitchen, perhaps featuring a sociable central island, perfectly tailored to your individual style and needs. A unique feature is the existing walk-in fridge, offering the flexibility to serve as a spacious chiller or be transformed into an elegant wine cellar. Situated conveniently adjacent is a utility room with direct access to the rear of the property, making laundry a breeze. Furthermore, the kitchen space flows into a bright room that once served as an outdoor kitchen. Picture this as a delightful indoor dining area, bathed in natural warmth and light, where you can comfortably enjoy meals, read a book, and sip your morning coffee on cooler days, all while still feeling connected to the beautiful surroundings.

The large terrace, with pretty terracotta tiles, provides numerous lovely spots to sit and soak in the captivating views from every angle. Just a few gentle steps lead you to the inviting pool and lounge area, a perfect oasis for relaxation. Adding a touch of luxury is a second, elegant infinity pool that seems to cascade from the main one. Throughout the villa, the beautiful wooden shutters on every window and door enhance its authentic and charming character.

Discover a hidden treasure behind the villa – an additional terrace awaiting a creative touch. Imagine restoring this space into a magical spot for enjoying unforgettable summer evenings and spectacular sunsets.

Practicality is ensured with double automated gates. One provides access to the villa itself, while the other offers a level driveway to the spacious garage. Adding further value, a substantial room with a bathroom, previously used as a gym, is located on a lower level.

The surrounding land is a green sanctuary, filled with lush plants that create a tranquil atmosphere, perfect for peaceful moments and enjoying the beauty of nature.

Nestled in a peaceful cul-de-sac in the sought-after area of Valtocado, this villa offers a wonderful opportunity to create a truly special home with breathtaking views and undeniable charm. This lovely Andalucian villa is in a quiet spot in Valtocado and has amazing views all around. It's a special place where you can make your dream home, looking out over Mijas and Fuengirola with the sparkling sea in the distance.

IDILIQ

ESTATES



IDILIQ

ESTATES



IDILIQ

ESTATES



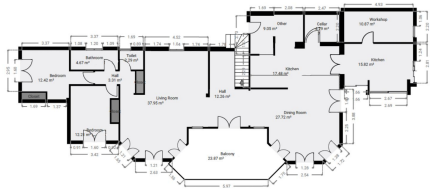
IDILIQ

ESTATES

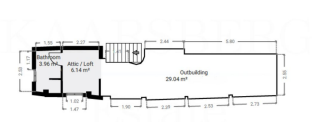




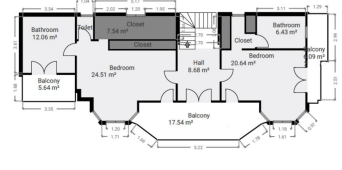
NOT TO SCALE
round floor



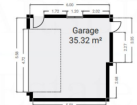
NOT TO SCALE
Gym



NOT TO SCALE
First floor



NOT TO SCALE
Garage



NOT TO SCALE
round floor
Guest room

