

# IDILIQ

ESTATES



R5027092

📍 Estepona

REF# R5027092 595.000 €

BEDS

3

BATHS

2

BUILT

135 m<sup>2</sup>

TERRACE

30 m<sup>2</sup>

## Penthouse with Panoramic Sea & Golf Views – Estepona

Discover this spectacular south-facing penthouse in an exclusive frontline golf development in Estepona, offering abundant natural light and stunning panoramic views of the sea and golf course. Ideally located just 5 minutes from Alcazaba Lagoon and close to Estepona's new hospital, schools, restaurants, and supermarkets, this property combines luxury and convenience.

The spacious interior features a bright open-plan living and dining area, a modern fully equipped kitchen, and direct access to a large private terrace—perfect for enjoying the peaceful surroundings and breathtaking views. The master bedroom includes a walk-in wardrobe, en-suite bathroom with walk-in shower, and access to the terrace. Two additional generous bedrooms with built-in wardrobes, a stylish bathroom with double sinks and walk-in shower, and a laundry area complete the layout.

Additional features include a private underground parking space and a storage room. The well-maintained development offers excellent amenities such as a large swimming pool with sea and mountain views, a fully

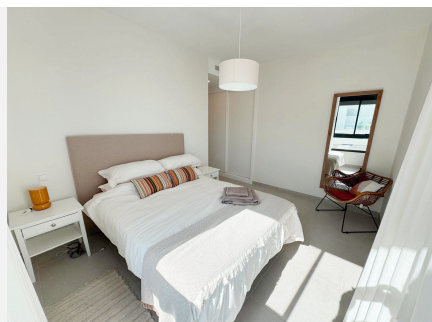
+34 951 123 083 | +44 (0)330 179 8687 | info@idiliqestates.com Local 28, Edificio D, Centro de Negocios Puerta de Banús, N-340, Km 175, 29660 Nueva Andlucia

# IDILIQ

ESTATES

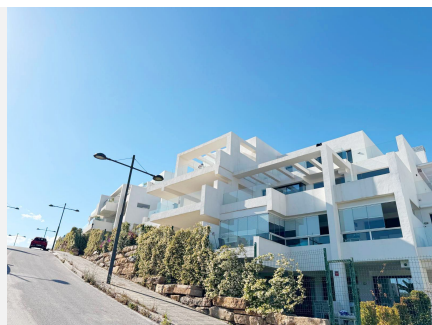
equipped gym, and 24-hour security.

This property is ideal for luxurious living or as a high-yield rental investment on the Costa del Sol.



# IDILIQ

ESTATES



# IDILIQ

ESTATES

