



MIDDLE FLOOR APARTMENT 3 BEDROOMS 2 BATHROOMS IN BENAHAVÍS

📍 Benahavís

REF# R5026972 849.000 €

BEDS

3

BATHS

2

BUILT

119 m²

TERRACE

58 m²

Experience one of the most spectacular panoramic views in all of Marbella from this newly renovated, fully furnished corner apartment — a refined blend of elegance and comfort.

Discover 119m² of beautifully designed living space, where a contemporary open-plan layout connects the sleek, fully equipped kitchen with the bright and airy living and dining areas. The interior features seamless Mortex microcement flooring throughout, high-quality finishes, and top appliances — all making this home truly move-in ready.

This stunning apartment boasts two spacious, partially covered terraces totaling 58m², perfectly oriented to the South and East for optimal sunlight throughout the day.. From here, enjoy uninterrupted panoramic views of the iconic La Concha Mountain, Marbella, golf courses, and the sparkling Mediterranean Sea — all the way to the African coastline. Whether you're taking in sunrise over the mountains or sunset over the sea, the scenery is simply unforgettable. One of the terraces offers a Plancha corner, perfect for al fresco

+34 951 123 083 | +44 (0)330 179 8687 | info@idiliqestates.com Local 28, Edificio D, Centro de Negocios Puerta de Banús, N-340, Km 175, 29660 Nueva Andlucia

IDILIQ

ESTATES

meals with family and friends. Even from inside the apartment, the spectacular views are ever-present thanks to the well-placed windows and layout.

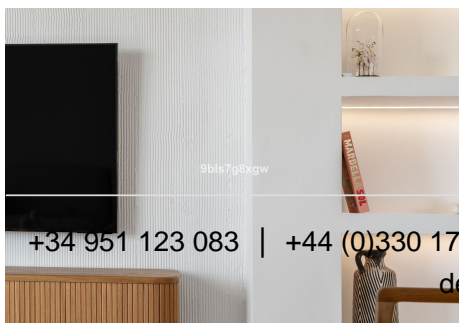
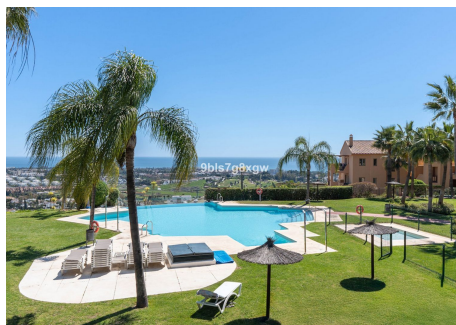
The serene master suite features direct terrace access, a walk-in closet, and a modern en-suite bathroom. Two additional bedrooms offer fitted wardrobes and share a stylish bathroom.

Designed for year-round living, the apartment includes underfloor heating throughout and a brand-new reversible air conditioning system. Both, along with the smart water heater, can be remotely controlled.

Set within a gated, 24/7 secured community with concierge service, residents enjoy access to lush tropical gardens, four swimming pools — including a heated infinity pool — and a brand-new gym currently under construction. The property also includes 2 underground parking spaces (with ducting for EV-charger) and 2 storage rooms.

Located in the exclusive municipality of Benahavís — ideally positioned between Marbella and Estepona — this home is just 5 minutes from shops, 10 minutes from the beach, and only 49 minutes from Málaga airport.

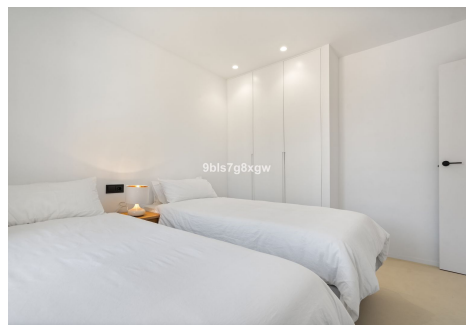
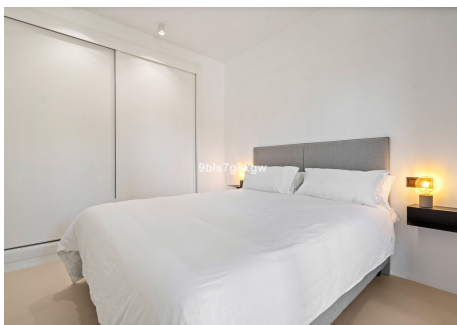
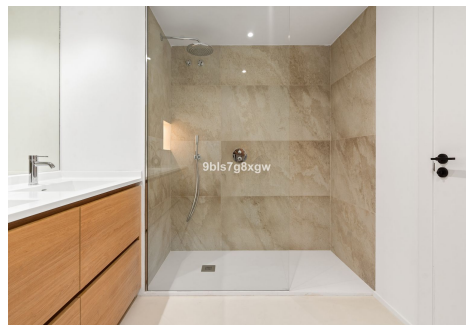
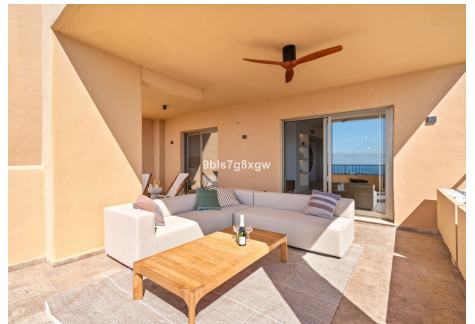
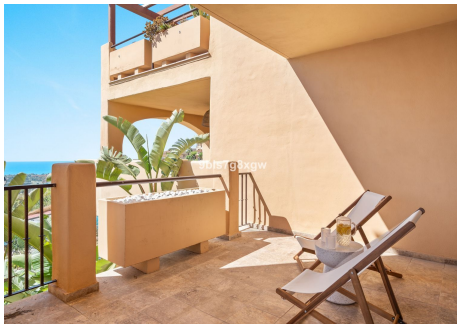
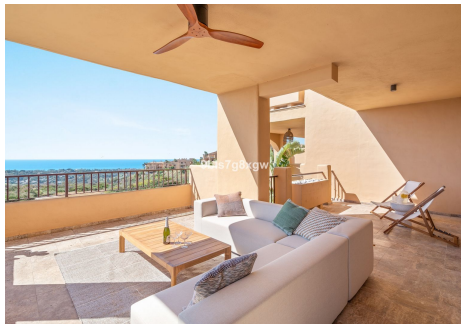
Whether you're seeking a stylish permanent residence, a sun-drenched holiday retreat, or a high-value investment, this rare gem offers it all.



+34 951 123 083 | +44 (0)330 179 8687 | info@idiliqestates.com | Local 28, Edificio D, Centro de Negocios Puerta de Banús, N-340, Km 175, 29660 Nueva Andalucía

IDILIQ

ESTATES



IDILIQ

ESTATES

