



R5026852

📍 Benahavís

REF# R5026852 545.000 €

BEDS

2

BATHS

2

BUILT

180 m²

TERRACE

40 m²

This semi-detached, south-facing townhouse with abundant natural light spans 184 square meters and includes a garage and storage.

It features brand new Daikin air conditioning, pure water filtration for drinking and washing and mosquito screens throughout. The house is located in the picturesque village of La Heredia within Monte Mayor, this home offers peace, privacy, and a unique connection to nature—just a 10-minute scenic drive to the coast.

Downstairs:

Upon entering, a convenient toilet is located on your right. The generous salon features a large fireplace and expansive windows, filling the space with light and offering panoramic views of the surrounding nature and the Mediterranean. Adjacent to the salon is a bright dining room with equally stunning views. The kitchen is fully equipped with Samsung appliances and offers a practical adjoining laundry room. Step out onto the veranda—a perfect space for relaxing or al fresco dining while soaking in the scenery.

Upstairs:

+34 951 123 083 | +44 (0)330 179 8687 | info@idiliqestates.com Local 28, Edificio D, Centro de Negocios Puerta de Banús, N-340, Km 175, 29660 Nueva Andlucia

IDILIQ

ESTATES

A spacious landing connects the two bedrooms, each with its own en-suite bathroom featuring both a bath and a shower. Both bedrooms include built-in wardrobes and Juliet balconies with spectacular views of the natural surroundings.

Community Amenities:

- Community pool for residents
- 24-hour gated security
- On-site café and tennis courts
- Direct access to hiking trails and rich wildlife., Benahavís, Costa del Sol.

2 Bedrooms, 2 Bathrooms, Built 180 m², Terrace 40 m².

Setting : Mountain Pueblo, Close To Shops, Close To Town, Close To Schools, Close To Forest, Urbanisation.

Orientation : South.

Condition : Excellent.

Pool : Communal.

Climate Control : Air Conditioning, Hot A/C, Cold A/C, Fireplace.

Views : Mountain, Golf, Country.

Features : Covered Terrace, Private Terrace, WiFi, Tennis Court, Storage Room, Utility Room, Ensuite Bathroom, Double Glazing.

Furniture : Part Furnished.

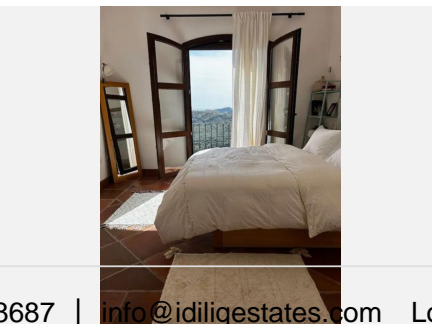
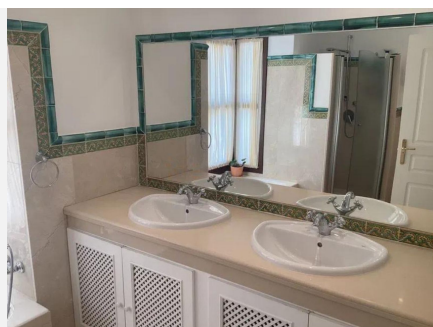
Kitchen : Fully Fitted.

Garden : Communal.

Security : Gated Complex, 24 Hour Security.

Parking : Underground, Garage, Covered, Private.

Category : Resale.



IDILIQ

ESTATES

