



MIDDLE FLOOR APARTMENT 2 BEDROOMS 2 BATHROOMS IN NAGÜELES

 Nagüeles

REF# R5026840 420.000 €

BEDS

2

BATHS

2

BUILT

128 m²

Discover this stunning apartment for sale in the prestigious Nagüeles area of Marbella, Costa del Sol—a perfect blend of luxury and tranquility! This 2-bedroom, 2-bathroom gem boasts partial sea and mountain views to the south and lush greenery to the north. Nestled in a peaceful, well-maintained community with few neighbors, this property offers the best of both worlds: serene living with easy access to the vibrant heart of Marbella.

Property Highlights:

Prime Location: 900m from Punte Romana or the Golden Mile, 2.5km from Puerto Banus, close to the city center, schools, and transport links, yet surrounded by nature in a quiet urbanization.

Orientation: South and northeast-facing, ensuring plenty of natural light and scenic views of the mountains and gardens.

Community Amenities: Enjoy a refreshing communal pool and beautifully landscaped gardens.

+34 951 123 083 | +44 (0)330 179 8687 | info@idiliqestates.com Local 28, Edificio D, Centro de Negocios Puerta de Banús, N-340, Km 175, 29660 Nueva Andlaucia

IDILIQ

ESTATES

Modern Comforts: Fully equipped kitchen, air conditioning (hot/cold), double glazing windows for energy efficiency.

Luxurious Features: Covered terrace, fitted wardrobes, en-suite bathroom, private laundry room, and a storage room for added convenience.

Parking & Storage: Includes a private garage and additional covered parking.

Move-In Ready: Partially furnished with high-quality finishes, ready for you to make it your own.

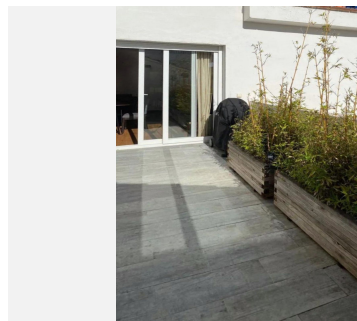
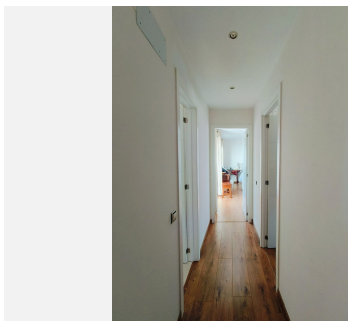
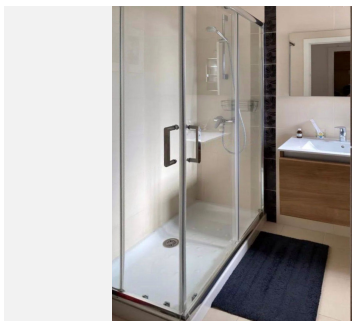
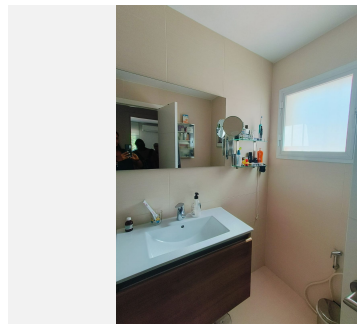
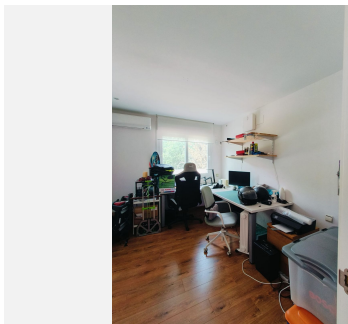
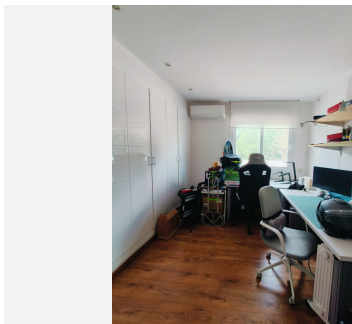
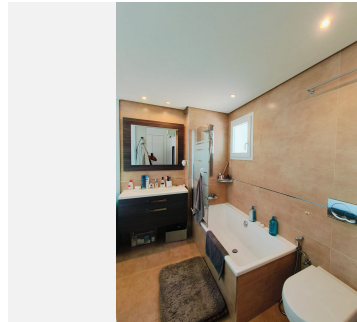
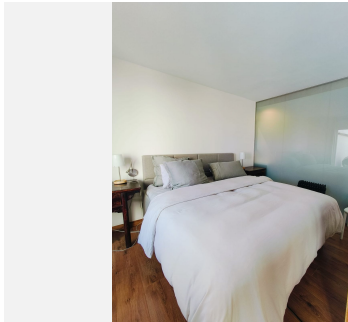
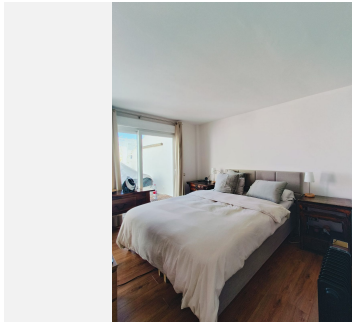
This apartment is ideal for those seeking a stylish retreat in one of Marbella's most sought-after neighborhoods. Perfect for year-round living or as a lucrative investment opportunity.

Don't miss your chance to own a slice of paradise on the Costa del Sol!

Built Area: 103m²

Parking Space: 21m²

Storage Room: 4m²



IDILIQ

ESTATES

