



R5024629

 Selwo

REF# R5024629    900.000 €

BEDS

2

BATHS

2

BUILT

112 m²

TERRACE

97 m²

Brand-new luxury penthouse with breathtaking panoramic sea views — from Gibraltar to the African Coast. Introducing a truly unique and newly completed penthouse in the exclusive Vanian Views residential complex, nestled in the sought-after Selwo area of Estepona. This modern masterpiece offers uninterrupted panoramic views of the Mediterranean, stretching from the Rock of Gibraltar to the North African coastline. Ideally positioned, the penthouse is moments away from Selwo Aventura Park, Atlas American School of Málaga, the Orthodox Church, and Hospiten Estepona. The beach is just 2.5 km away, Estepona town center is a 10-minute drive, and there are eight renowned golf courses within a 15-minute radius.

Vanian Views is a private, gated development of only 61 homes, designed to maximize light, space, and the incredible surroundings. Communal amenities include a large central swimming pool, a stylish social club, a fully equipped gym, and a sauna — all set within beautifully landscaped gardens.

This penthouse is brand new and ready to move-in. The main level features a welcoming entrance with built-in wardrobes, an expansive open plan living and dining area with sea views from the moment you walk in, and a sleek, modern kitchen with a large central island. The master suite includes an en-suite bathroom and access to the main 32 m² terrace, shared with the living area and the kitchen — perfect for enjoying those unbeatable vistas. In the back the second bedroom and bathroom with views to the communal pool.

+34 951 123 083 | +34 (0)330 179 8687 | [info@idiliqestates.com](mailto:info@idiliqestates.com) Local 28, Edificio D, Centro de Negocios Puerta de Banús, N-340, Km 175, 29660 Nueva Andalucía

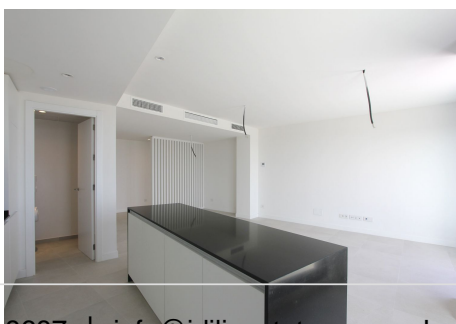
# IDILIQ

## ESTATES

An exterior staircase leads to your private 65 m<sup>2</sup> rooftop solarium with 360° views to the sea, Sierra Bermeja, and La Concha mountains. The solarium includes a stylish pergola and pre-installation for an outdoor kitchen, ideal for entertaining under the sun or stars.

Additional features include two private underground parking spaces, a large storage room, and direct elevator access from the garage to the penthouse. Air conditioning hot and cold, underfloor heating in the bathroom, fully furnished kitchen with Bosch appliances

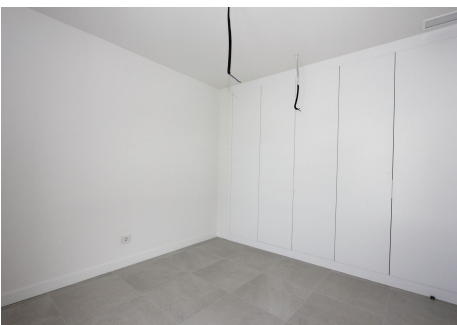
This exceptional home is where the sky meets the sea — a peaceful retreat with luxury, comfort, and views beyond compare.





# IDILIQ

ESTATES





# IDILIQ

ESTATES



# IDILIQ

ESTATES

